



# ACADEMIC DEVELOPMENT

Learning and development opportunities for  
academics engaged in education, scholarship,  
and research

# ENHANCE YOUR TEACHING

There are a range of development programmes and workshops to support you with developing your teaching here at the University.



## Teaching Essentials\*

This session offers an opportunity to explore the knowledge, understanding, skills, and values needed to enable students to learn effectively in the University of Exeter HE environment. From constructive alignment to effective questioning techniques, this is an active session modelling a variety of teaching methods.

**Course details:** **E** **C**

4.5 hours



## Teaching in a Digital Age\*\*

This session will introduce you to Technology Enhanced Learning (TEL) at the University of Exeter. It is a mix of theory, discussion, and demonstrations and is designed to encourage you to think about how you can start to initiate a blended approach to your own curriculum delivery. You will have the chance to experience and explore a number of technologies and examples of how they could be used in practice.

**Course details:** **E** **C**

2.5 hours



## Show and TEL Workshops\*\*

The TEL team will be delivering a series of workshops to support you with your use of technology in learning and teaching. Available workshops include:

- Online assessment and feedback: an introduction to the tools available for assessing, collecting work, and providing feedback online
- Making lectures more interactive: how you can deliver learning that actively engages large numbers of students in a lecture theatre
- Video-enhanced learning: sharing ideas and tools for using video to enhance learning and create learning resources
- Collaborative enhanced learning: looking at the tools available for group work and collaboration in and out of lectures and seminars
- Using ELE to enhance learning: guidance on using the ELE online teaching environment to support and enhance your face-to-face teaching

**Course details:** **E** **C**

1 hour

*\*Academics who are new to teaching and learning at the University of Exeter.*

*\*\* New and existing academics.*



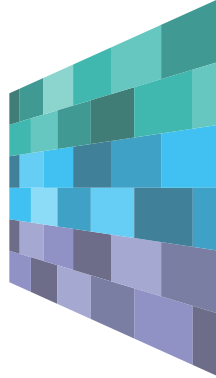
## ASPIRE (Accrediting Staff Professionalism in Research-Led Education)

This framework offers an opportunity to gain reward and recognition for teaching, supervising, and/or supporting learning at the University of Exeter. ASPIRE awards applicants with both a University of Exeter ASPIRE fellowship and a correlating HEA fellowship. You can gain ASPIRE and HEA fellowship through one of two routes – either by completing one of the two initial

Professional Development taught programmes (Learning and Teaching in Higher Education, LTHE; or Postgraduate Certificate in Academic Practice, PCAP) or by applying for fellowship on the basis of experience directly through the ASPIRE Professional Recognition Programme (PRP). Further information on the ASPIRE Framework can be found at [www.exeter.ac.uk/as/aspire](http://www.exeter.ac.uk/as/aspire).

ASPIRE Framework		
Taught Programmes		Direct Application Route
LTHE Learning and Teaching in Higher Education	PCAP PG Certificate in Academic Practice	Aspire Professional Recognition Pathway
The option of ASPIRE/HEA Associate Fellowship 30 credits at Level 7	ASPIRE/HEA Fellowship 60 credits at Level 7	ASPIRE/HEA Associate Fellowship ASPIRE/HEA Fellowship ASPIRE/HEA Senior Fellowship ASPIRE/HEA Principal Fellowship
Mandatory for PG Teaching Assistants	Mandatory for Lecturers (E&R) Strongly recommended for Lecturers (E&S)	

# LEARNING AND TEACHING IN HIGHER EDUCATION (LTHE)\*



I.

## LTHE Stage 1

This one-day course, offered in the Autumn and Spring Terms each year, provides an introduction to a range of principles of learning and teaching. It will encourage you to make connections between your own experience, the experience of others, and existing education scholarship. You will have the opportunity to explore the knowledge, understanding, skills, and values needed to enable students to learn effectively in a modern Higher Education environment. You will also be able to 'practise' teaching in a short micro-teaching activity, and gain constructive feedback from your peers. You will find out more about the range of resources and other courses available to support you in your teaching role.

**Course details:** **E** **C**

6.5 hours

II.

## LTHE Stage 2

During the second stage of the LTHE Programme, you will look in greater depth at learning, teaching, student support, assessment, and evaluation. Stage 2 is offered in the Autumn and Spring Terms each year (this course usually starts in the month following Stage 1). It comprises four three-hour afternoon sessions, in consecutive weeks. You will also be asked to undertake a variety of preparation and consolidation activities between the sessions. Contemporary themes, such as education for sustainability, cultural inclusivity, technology-enhanced learning, employability, and research-led teaching, will permeate aspects of the course.

**Course details:** **E** **C**

4 sessions at 3 hours each



*\*LTHE is mandatory for postgraduate researchers (PGRs) who are employed to teach or support students' learning at the University of Exeter and who have responsibility for planning and organizing sessions and/or assessment (either formative or summative). It is also available to professional services staff and academic colleagues on E&S Associate Lecturer or research-only contracts who have a responsibility for teaching and/or supporting learning.*

**E** Training delivered on an Exeter campus

**C** Training delivered on a Cornwall campus

# PG CERTIFICATE IN ACADEMIC PRACTICE (PCAP)

I.

## PCAP Module 1

This module aims to provide a theoretical grounding in the principles of academic practice and its political and social contexts. Its purpose is to support you in building on your existing skills and knowledge in order to become effective academics and professionals operating with integrity in your departments, in the University and in the national and international context. It is intended to enhance your confidence and effectiveness through informed reflection on your own practice and enable you to thrive within a research-intensive university such as the University of Exeter.

**Course details:**  

3 sessions at 8 hours each

II.

## PCAP Module 2


In this module, we aim to enable you to find creative and research-informed ways of enhancing your academic and professional practice with respect to supporting student learning. You will develop ways of engaging in peer dialogue so that you can participate in and develop supportive communities of practice amongst colleagues from across the University, with a focus on sharing and improving teaching practices and enhancing the student experience. Through critical exploration of relevant education theory, recent developments in HE, and University policy, while taking into account peer and student feedback, you will also locate and evaluate your practice within current institutional, political, and social contexts and identify a specific aspect of your teaching practice to develop further.

**Course details:**  

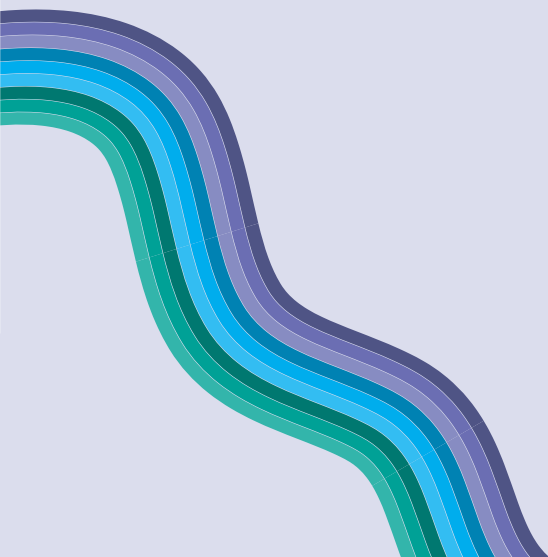
3 sessions at 8 hours each

*For Module 2 of PCAP, recent teaching experience within higher education in the UK (at least 100 hours within the past year) and current and/or planned responsibilities in education (at least 100 hours in the coming year) at Exeter are pre-requisites for study.*

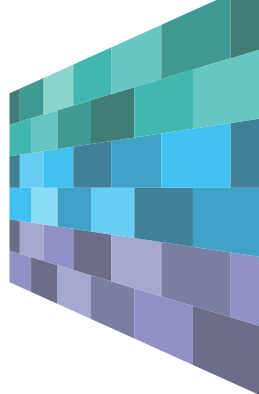
**PCAP is mandatory for new E&R lecturers and is strongly recommended for new lecturers on E&S contracts. Other colleagues are welcome to apply.**

 Training delivered on an Exeter campus

 Training delivered on a Cornwall campus



# ASPIRE PROFESSIONAL RECOGNITION PATHWAY (PRP)\*



## ASPIRE PRP Guidance Session

These sessions, which focus on professional recognition for teaching and supporting learning in HE, include an outline of the routes to HEA fellowship through the University of Exeter's ASPIRE Framework. You will be introduced to the UK Professional Standards Framework (UKPSF), the four categories of fellowship, and the process of applying via the ASPIRE PRP. You will engage in activities which will help you map your education practice to the UKPSF and to the relevant fellowship descriptor. You will also have the opportunity to reflect on your current practice and the ways in which you can develop yourself in preparation for an application for ASPIRE/HEA fellowship.

**Course details:** **E** **C**

2 hours

## ASPIRE PRP Writing Retreat

The Writing Retreat provides a quiet, collaborative space and an informal opportunity to spend time away from the office making progress on your ASPIRE/HEA fellowship application. It is a chance to engage with the education literature and discuss your application with ASPIRE PRP Mentors and the Academic Development team, as well as others in the process of completing their own applications. You can make best use of support on the day by bringing along a draft of your application and any other work you have done in advance of the session. By the end of the session, you should have a good draft of your application and be well placed to move towards submitting your application and references to an ASPIRE PRP Assessment Panel.

**Course details:** **E** **C**

2 hours

## ASPIRE PRP Writing Spaces

These flexible sessions are available across all campuses to support staff building their ASPIRE PRP applications. The one-hour Writing Spaces offer access to advice and guidance from the ASPIRE PRP team, together with supportive resources and the chance to share practice with others on the Professional Recognition Pathway. Please visit the ASPIRE webpage for further information on times and locations of these sessions.

*\*The ASPIRE PRP sessions are open to all academic and professional services colleagues with a role in teaching and supporting learning.*

# TUTORING, SUPERVISION, AND LEADERSHIP TRAINING



## Academic and Personal Tutoring

This workshop is available to all staff responsible for tutoring students. It can be requested on a College-wide or discipline-specific basis, depending on numbers. This means that each session can be tailored to include the elements most relevant to Tutors in those areas.

Previous sessions have included themes such as the following:

- An introduction for academic/personal tutors who are new to the role
- An introduction to the Academic Tutor Framework (ATF)
- Academic group tutorial curriculum design
- Facilitating small group discussions
- Having effective one-to-one conversations
- Effective coaching techniques
- Focused discussion on student mental health and wellbeing
- An introduction to the Health, Wellbeing and Support for Study (HWSS) procedure

### Course details: **E** **C**

3 hours

*New and existing academic staff.  
This workshop is available by request.*



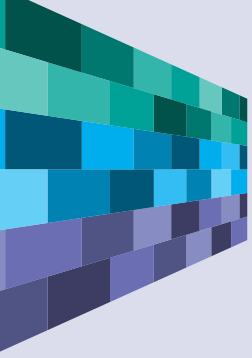
## Senior Tutor Forum

This informal group provides networking opportunities for Senior Tutors so they can support each other and share best practice in tutoring and supporting students in a Senior Tutor role. The Forum also gives academics an opportunity to interact with Professional Services staff who play a key role in student support.

### Course details: **E** **C**

1.5 hours, once per term

*All Senior Tutors and any staff with a senior role in providing support for academic and personal tutoring in Colleges.*



III.

### Doctoral Supervision: An Exploratory Workshop

Drawing on recent research into supervisor roles and the postgraduate research student experience, the session will cover a range of topics including barriers to and enablers of timely completion, good practice in conducting and recording supervisions, supervising through the varied phases of the doctorate, administrative requirements of postgraduate supervision, and information about the Researcher Development programme at the University of Exeter. You will have an opportunity to explore aspects of supervision with peers and with an experienced panel of supervisors.

**Course details:** **E** **C**

3 hours

*This session is designed to support and inform academic and research colleagues who are new or relatively new to the role of doctoral supervisor.*

IV.

### Doctoral Supervision: Navigating the Examinations Process

This workshop is designed to demystify the University of Exeter's doctoral examination process by clarifying regulations and expectations as they pertain to both supervisors and their PGR students. Further, we will consider recommendations for best practice associated with preparing your PGR student for a viva as well as for being an examiner for other candidates. The discussion is designed to explain the logic behind the University's doctoral examination regulations and provide information on who is available to support both you and your student should you need any assistance with or advice about the viva.

**Course details:** **E** **C**

3 hours

*Academic and research colleagues who are new to doctoral examinations, either in general, at the University, or within the UK.*



V.

## PGR Pastoral Tutoring Workshop

This workshop is designed to clarify the role of the PGR pastoral tutor and consider how pastoral tutors fit within the broader supervisory team. We will consider the sorts of pastoral issues with which PGR students commonly require support, examine the ways in which you can identify at-risk and struggling students, discuss the boundaries associated with providing pastoral support, and identify the support teams to which you can signpost students in need.

**Course details:** **E C**

1.5 hours

*Academics who have been appointed as PGR academic tutor, or who would like to learn more about PGR pastoral tutoring and how this role fits into the supervisory team as a whole.*

VI.

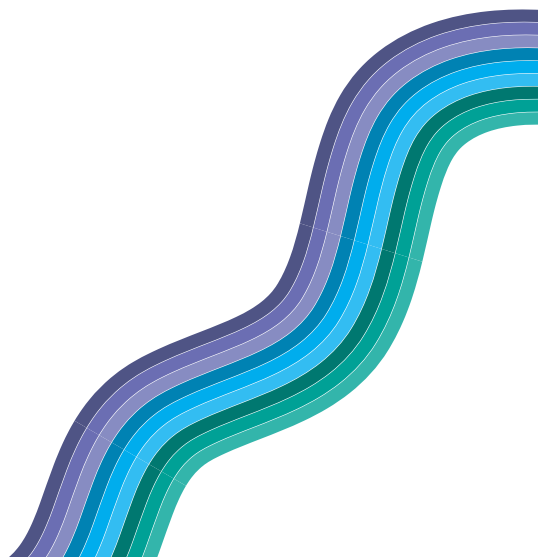
## Head of Discipline Induction and Leadership Programme

This structured training programme aims to help Heads of Discipline understand what is expected of academics in this role and how they can be effective leaders. We will explore the importance of, and methods for, developing a community of practice. The session also provides an opportunity for HoDs from across the University to exchange ideas, share good practice, and tackle any problems they have faced.

**Course details:** **E C**

4 sessions of various lengths

*This programme has been tailored for anyone new or relatively new to the role of HoD.*



# EDUCATION EVENTS

## Academic Practice Network

The network comprises themed sessions to explore constructive, realistic, and innovative solutions to the challenges of teaching in higher education. Attendees are invited to share experiences, ideas, and examples of good practice.

**Course details:** **E** **C**

50 minutes

*Any academics and professional services colleagues engaged in or supporting teaching and learning activities at the University of Exeter.*

## Education Conference

The University of Exeter's annual education conference offers colleagues a chance to celebrate and reflect on a range of education-related activities in our research-intensive context, and to share best practice across the institution. Through a combination of plenaries, short presentations, interactive workshops, poster sessions, and opportunities for informal chatting and networking, the conference will facilitate discussion and collaboration among a wide range of colleagues.

**Course details:** **E** **C**

*The event is designed for anyone who engages with teaching or teaching support activities at the University of Exeter—including lecturers, researchers, professional services staff, mentors, tutors, supervisors, and students.*

## BOOK NOW

You can book a place on many of our workshops and programmes via [www.exeter.ac.uk/staff/services/selfservice](http://www.exeter.ac.uk/staff/services/selfservice).

To participate in any developmental activities not listed on Trent, please contact the Academic Development team using one of the following email addresses:

**ASPIRE PRP:** [aspire@exeter.ac.uk](mailto:aspire@exeter.ac.uk)

**LTHE:** [lthe@exeter.ac.uk](mailto:lthe@exeter.ac.uk)

**PCAP:** [pcap@exeter.ac.uk](mailto:pcap@exeter.ac.uk)

You can also contact the Academic Development team at [academicdevelopment@exeter.ac.uk](mailto:academicdevelopment@exeter.ac.uk) to request a bespoke developmental activity or to seek advice or further information.

You may also be interested in additional professional development courses run by the People Development team. These include courses on entrepreneurialism, management, and personal effectiveness; programmes leading to qualifications; mandatory training; and bespoke learning opportunities. Please see [www.exeter.ac.uk/staff/development/courses](http://www.exeter.ac.uk/staff/development/courses) for more information.





## ACADEMIC DEVELOPMENT

Old Library, Prince of Wales Road,  
Exeter, Devon EX4 4SB

ASPIRE PRP: [aspire@exeter.ac.uk](mailto:aspire@exeter.ac.uk)

LTHE: [lthe@exeter.ac.uk](mailto:lthe@exeter.ac.uk)

PCAP: [pcap@exeter.ac.uk](mailto:pcap@exeter.ac.uk)

General enquiries: [academicdevelopment@exeter.ac.uk](mailto:academicdevelopment@exeter.ac.uk)  
or visit: [www.exeter.ac.uk/staff/development](http://www.exeter.ac.uk/staff/development)

