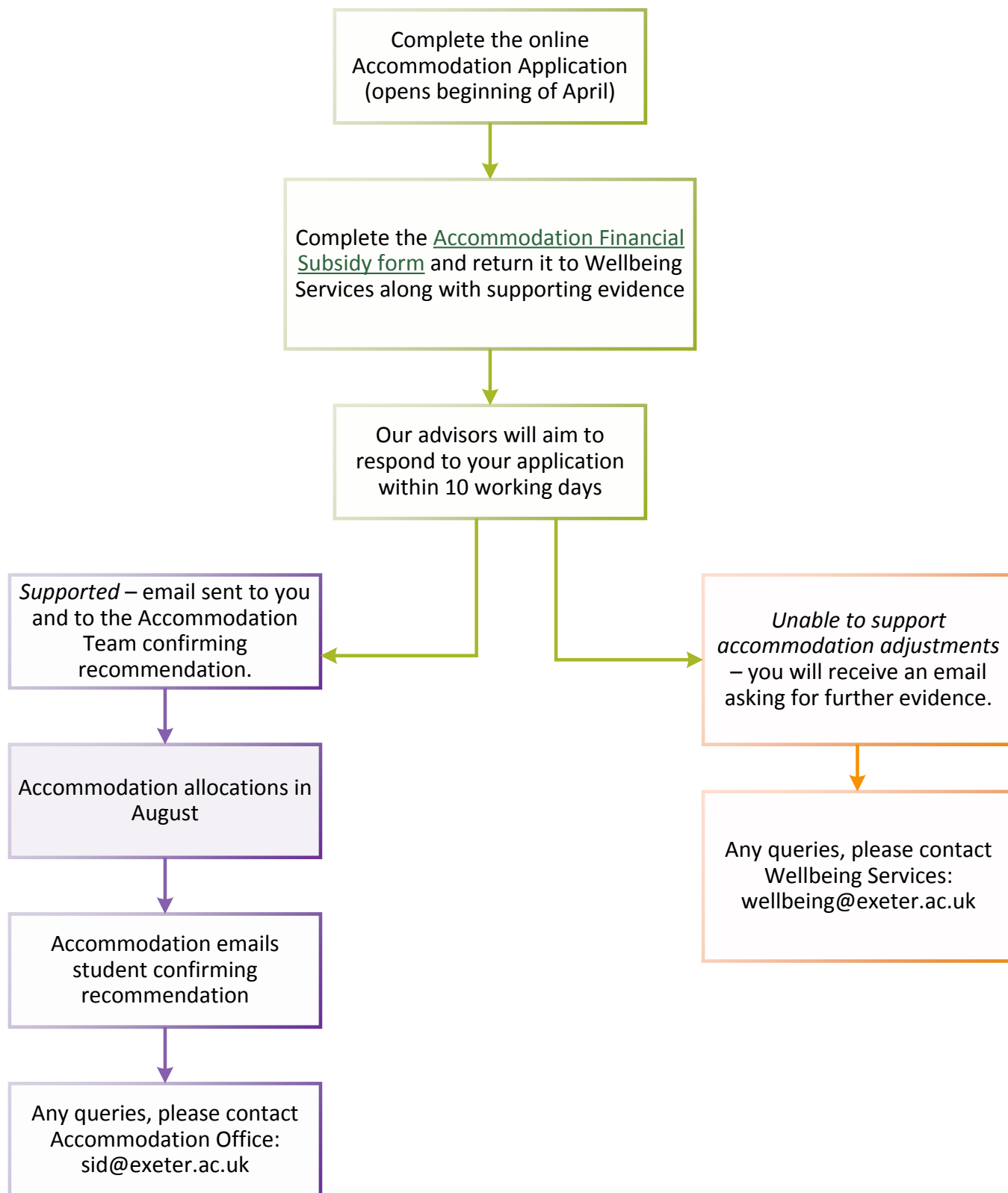


## Accommodation Financial Subsidy Process with Wellbeing Services:

Please note the subsidy is only applicable to students who are applying as residents in accommodation where the University issues the contract (i.e. residences in the City that are nominated by the University but where the contract is with a private company are **not** covered by this subsidy).



**If you wish to apply to return to University accommodation due to disability/health grounds for the next academic year, you will need to apply in January as a Medical Supported Returner. You will need to provide written support, which can be from Wellbeing Services or the Student Health Centre. Read more at: <https://www.exeter.ac.uk/accommodation/students/currentstudents/returningstudents/>**

The accommodation subsidy will need to be **applied for each academic year**. Read more at: <https://www.exeter.ac.uk/accommodation/students/currentstudents/returningstudents/#a7>