

# Queen's Building Second Floor

Capabilities of facilities

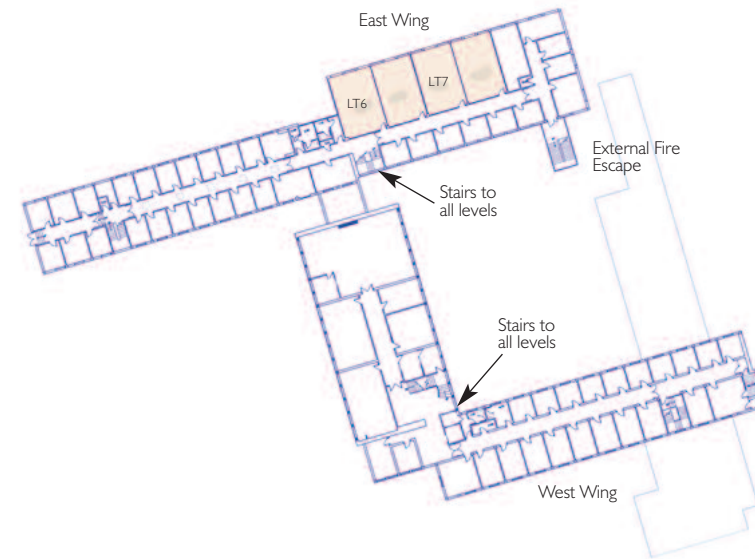
## Facilities at a glance – Second Floor

	Theatre	Boardroom	Classroom	Cabaret	Horseshoe of chairs
Lecture Theatre 6 (Flat floored with dividing wall)	80	-	60	48	60
Lecture Theatre 6 divided - LT 6.1	40	24	30	28	24
Lecture Theatre 6 divided - LT 6.2	40	24	30	28	24
Lecture Theatre 7 (Flat floored with dividing wall)	80	-	60	48	60
Lecture Theatre 7 divided - LT 7.1	40	24	30	28	24
Lecture Theatre 7 divided - LT 7.2	40	24	30	28	24

## Lecture Theatres 6 & 7 – Second Floor

Flat floored lecture theatres with movable wall to convert to 2 separate areas	80 Maximum number combined
Heating	Underfloor heating
Lighting	Ceiling lights + natural light with blackouts
Ventilation	Windows open if required
Flooring	Carpet
Fire Exits	Either end of the corridor via internal or external stairs
Built in equipment	<ul style="list-style-type: none"> <li>• Data projector • Computer • White board</li> <li>• OHP • Projector screen • DVD player</li> <li>• Video tape player • Network points</li> </ul>
Accessibility	Not wheelchair accessible

*No lift to this floor*



For further information please speak to one of our event team on:

Tel +44 (0)1392 215566 Fax +44 (0)1392 263512

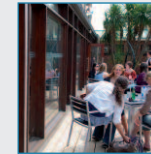
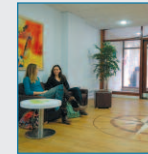
Email [eventexeter@exeter.ac.uk](mailto:eventexeter@exeter.ac.uk)

[www.eventexeter.com](http://www.eventexeter.com)

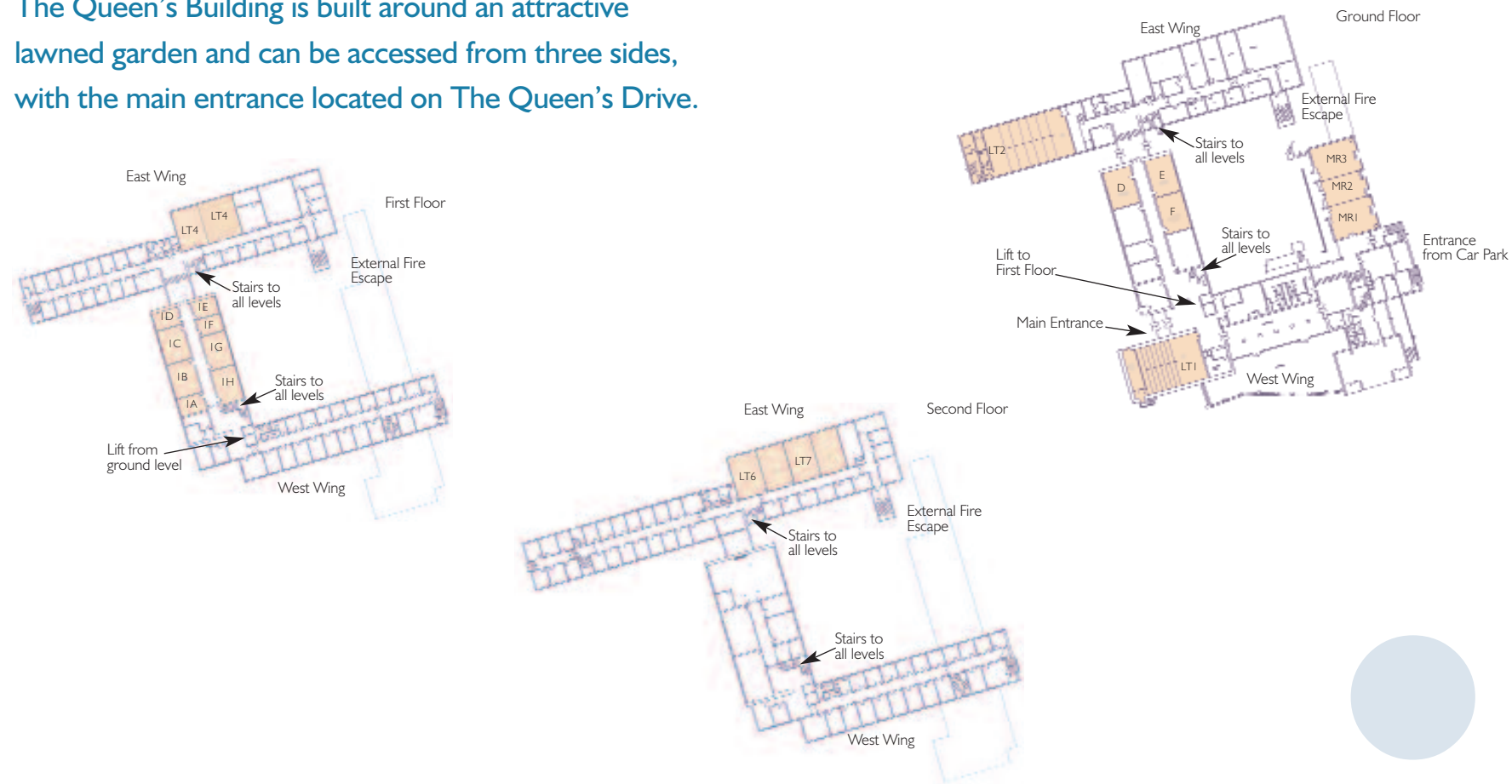
  
**event**  
**exeter**  
 venues and hospitality  
 University of Exeter

event exeter venues

# Queen's Building



The Queen's Building is built around an attractive lawned garden and can be accessed from three sides, with the main entrance located on The Queen's Drive.



# Queen's Building Ground Floor

## Facilities at a glance – Ground Floor

	Theatre	Boardroom	Classroom	Cabaret	Horseshoe of chairs
Lecture Theatre 1 (Fixed tiered)	120	-	-	-	-
Lecture Theatre 2 (Fixed tiered)	152	-	-	-	-
Margaret Rooms 1	30	20	NA	NA	32
Margaret Rooms 2	24	12	NA	NA	12
Margaret Rooms 3	30	20	NA	NA	32
Margaret Rooms 1 & 2 combined	54	32	NA	NA	32
Margaret Rooms 2 & 3 combined	54	32	NA	NA	32
Margaret Rooms 1 & 2 & 3 combined	86	NA	NA	NA	NA
Seminar Room D	50	24	32	NA	40
Seminar Room E	50	24	32	NA	40
Seminar Room F	50	24	32	NA	40

## Margaret Rooms – Ground Floor

Flat floored seminar room with moveable walls to convert into 3 separate areas	86 Maximum number combined Margaret Rooms 1 6.3m x 7.7m 48.5sqm Margaret Rooms 2 5.0m x 7.7m 38.5sqm Margaret Rooms 3 6.3m x 7.7m 48.5sqm
Heating	Underfloor heating
Lighting	Ceiling lights + natural light with blackouts
Ventilation	Windows open if required
Flooring	Carpet
Fire Exits	Via side doors of meeting rooms
Built in equipment	<ul style="list-style-type: none"> <li>• Data projector • Computer • OHP</li> <li>• Projector screen • DVD player</li> <li>• Network points • Hearing loop</li> </ul>
Accessibility	All chairs are movable due to the flat floor in this area. Wheelchair seating can therefore be arranged in line with the organiser's requirements

## Lecture Theatre 1 – Ground Floor

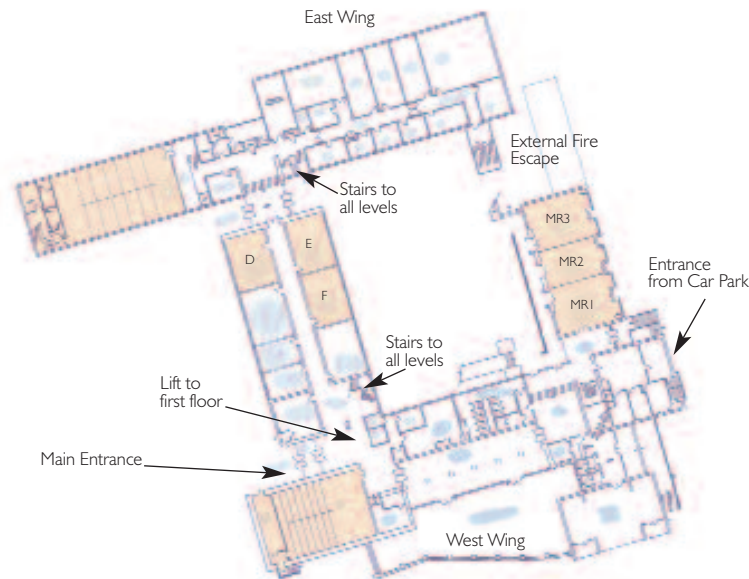
Fixed tiered lecture theatre	120 Maximum number
Heating	Underfloor heating
Lighting	Ceiling lights + natural light with black outs
Ventilation	Air conditioning
Flooring	Carpet
Fire Exits	Via main entrance doors
Built in equipment	<ul style="list-style-type: none"> <li>• Data projector • Computer • White board</li> <li>• OHP • Projector screen • DVD player</li> <li>• Video tape player • Lectern microphone</li> <li>• Network points • Hearing loop</li> </ul>
Accessibility	Wheelchair access but not defined seating

## Seminar Rooms D E F – Ground Floor

Flat floored seminar rooms	50 Maximum number
Heating	Underfloor heating
Lighting	Ceiling lights + natural light with blackouts
Ventilation	Windows open if required
Flooring	Carpet
Fire Exits	Either end of the corridor via lobby or main entrance
Built in equipment	<ul style="list-style-type: none"> <li>• Data projector • Computer • White board</li> <li>• OHP • Projector screen • DVD player</li> <li>• Video tape player • Network points</li> <li>• Hearing loop</li> </ul>
Accessibility	All chairs are movable due to the flat floor in this area. Wheelchair seating can therefore be arranged in line with the organiser's requirements

## Lecture Theatre 2 – Ground Floor

Fixed tiered lecture theatre	152 Maximum number
Heating	Underfloor heating
Lighting	Ceiling lights + natural light with blackouts
Ventilation	Air conditioning
Flooring	Carpet
Fire Exits	Via lobby doors off east wing
Built in equipment Video conferencing	<ul style="list-style-type: none"> <li>• Data projector • Computer • White board</li> <li>• OHP • Projector screen • DVD player</li> <li>• Video tape player • Lectern microphone</li> <li>• Network points • Hearing loop • Document camera</li> </ul>
Accessibility	Wheelchair access but not defined seating



## Dimensions and Facilities

### Facilities at a glance – First Floor

	Theatre	Boardroom	Classroom	Cabaret	Horseshoe of chairs
Lecture Theatre 4 (Flat floored with dividing wall)	100	-	70	60	80
Lecture Theatre 4 divided - LT 4.1	40	28	30	24	30
Lecture Theatre 4 divided - LT 4.2	60	30	40	36	50
Seminar Room IA	20	16	12	-	12
Seminar Room IB	50	24	32	-	40
Seminar Room IC	50	24	32	-	40
Seminar Room ID	20	16	12	-	12
Seminar Room IE	20	16	12	-	12
Seminar Room IF	20	16	12	-	12
Seminar Room IG	50	24	32	-	40
Seminar Room IH	50	24	32	-	40

### Lecture Theatre 4 – First Floor

Flat floored lecture theatre with movable wall to convert into 2 separate areas	100 Maximum number combined 105 sqm
Heating	Underfloor heating
Lighting	Ceiling lights + natural light with blackouts
Ventilation	Windows open if required
Flooring	Carpet
Fire Exits	Either end of the corridor via internal or external stairs
Built in equipment	<ul style="list-style-type: none"> <li>• Data projector • Computer • White board</li> <li>• OHP • Projector screen • Slide projector</li> <li>• DVD player • Video tape player • Network points • Hearing loop</li> </ul>
Accessibility	All chairs are movable due to the flat floor in this area. Wheelchair seating can therefore be arranged in line with the organiser's requirements.



### Seminar rooms – First Floor

	IA IB IC ID IE IF IG IH
Flat floored seminar rooms	Please refer to 'Facilities at a glance' for maximum numbers
Heating	Underfloor heating
Lighting	Ceiling lights + natural light with blackouts
Ventilation	Windows open if required
Flooring	Carpet
Fire Exits	Either end of the corridor via internal stairs
Built in equipment	<ul style="list-style-type: none"> <li>• White board • Projector screen • Network points • Hearing loop</li> </ul>
Accessibility	All chairs are movable due to the flat floor in this area. Wheelchair seating can therefore be arranged in line with the organiser's requirements.

