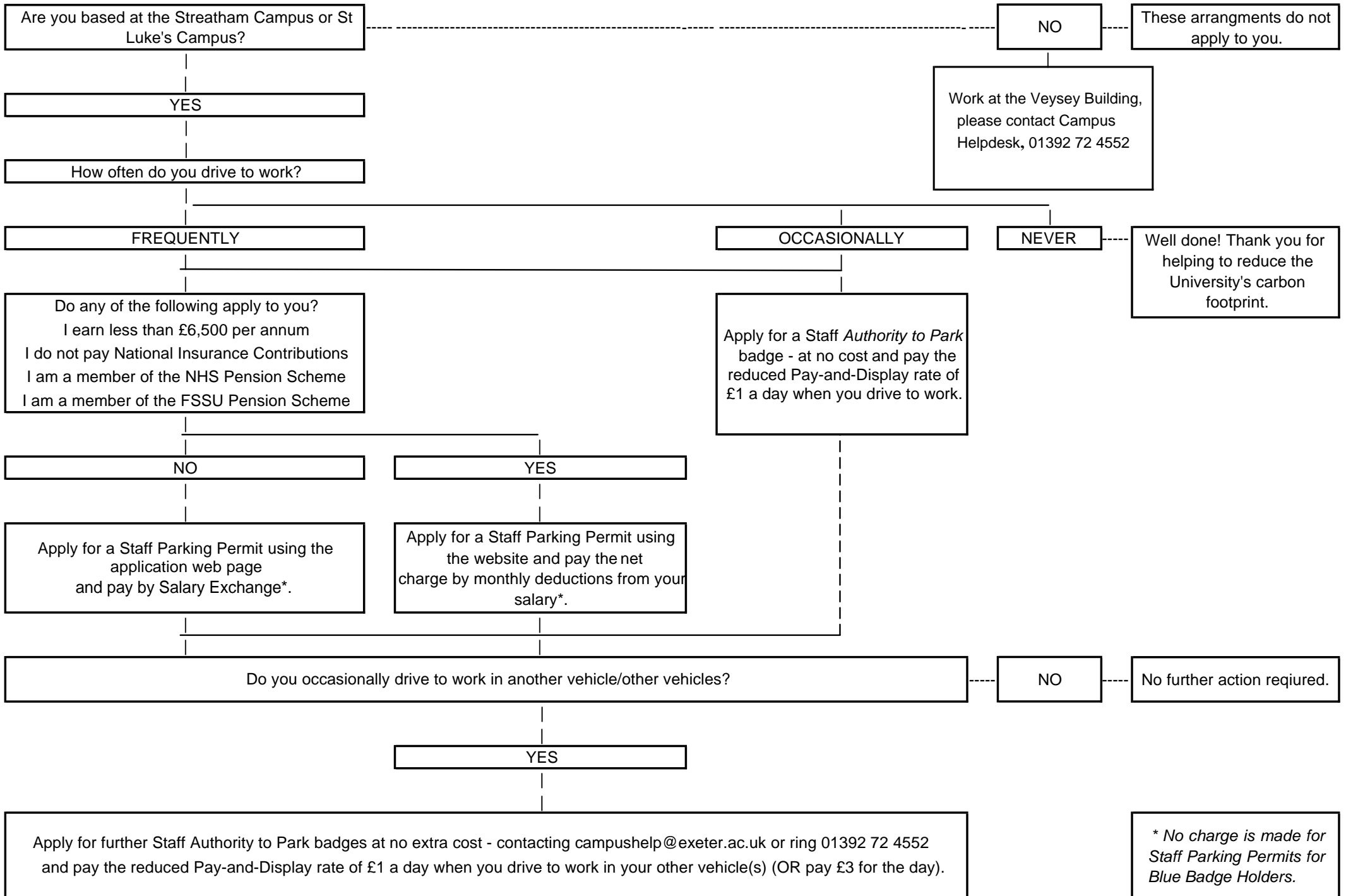


CAR PARKING AT THE EXETER CAMPUSES - YOUR CHOICES

August 2008



Are you based at the Streatham Campus or St Luke's Campus?

NO

These arrangements do not apply to you.

YES

Work at the Veysey Building, please contact Campus Helpdesk, 01392 72 4552

How often do you drive to work?

FREQUENTLY

OCCASIONALLY

NEVER

Well done! Thank you for helping to reduce the University's carbon footprint.

Do any of the following apply to you?
I earn less than £6,500 per annum
I do not pay National Insurance Contributions
I am a member of the NHS Pension Scheme
I am a member of the FSSU Pension Scheme

Apply for a Staff Authority to Park badge - at no cost and pay the reduced Pay-and-Display rate of £1 a day when you drive to work.

NO

YES

Apply for a Staff Parking Permit using the application web page and pay by Salary Exchange*.

Apply for a Staff Parking Permit using the website and pay the net charge by monthly deductions from your salary*.

Do you occasionally drive to work in another vehicle/other vehicles?

NO

No further action required.

YES

Apply for further Staff Authority to Park badges at no extra cost - contacting campushelp@exeter.ac.uk or ring 01392 72 4552 and pay the reduced Pay-and-Display rate of £1 a day when you drive to work in your other vehicle(s) (OR pay £3 for the day).

* No charge is made for Staff Parking Permits for Blue Badge Holders.