

University of Otago

Dunedin
New Zealand



The University

The University of Otago, founded in 1869, is New Zealand's oldest university. With close to 21,000 students currently enrolled, about 2,500 of these are international students from a wide variety of countries including Norway, Hong Kong and the United States. Otago offers a broad range of undergraduate courses, and its research is internationally recognised. Otago's main campus is based in the seaside city of Dunedin.

University Website: <http://www.otago.ac.nz/>



Location

Originally a small Scottish settlement, Dunedin is one of the best-preserved Victorian and Edwardian cities in the southern hemisphere. The contemporary city is now a cultural haven, offering fantastic centres for art and theatre, boutiques and sidewalk cafes. Dunedin, nicknamed "Rugby City", is well-known for sports, including water sports. The surrounding region of Otago provides a wide variety of athletic opportunities, including snow sports, bungee jumping and white-water rafting.

Travel

Dunedin is served by a regional airport, 30 minutes outside the city, and has connections with three international airports in New Zealand. When booking flights, it is advisable to book an international flight landing in Christchurch which is only a short journey onto Dunedin. There are both taxis and minibuses to the city from the airport; a minibus journey costs approximately \$15 and a taxi journey costs approximately \$50.



Immigration

A student visa is required. The application fee is around \$175 (£80). Work is permitted on a part-time basis only.

For further details: www.immigration.govt.nz/migrant/stream/study/

Housing

Accommodation placement services are guaranteed to Exchange Students for visa purposes. The International Office recommends the University-owned flats for Exchange Students on a 1-semester programme. Price per term for a room in a shared university flat is around \$3,000, or from \$3,565—\$4,320 for a self-contained 1-bedroom flat. Full details available at:

<http://www.otago.ac.nz/uniflats/faqs.html#d>

To apply for accommodation, or for further information on other accommodation options for international students, please visit the following website:

<http://www.otago.ac.nz/about/accommodation/application/international.html>



Health Insurance

International students must have medical insurance compliant with New Zealand government requirements. Studentsafe University is Otago's preferred provider, although students can elect another provider. Costs (anticipated to increase in 2010) are currently \$225 for one semester and \$450 for one year.



Term Dates

Semester 2 2010		Semester 1 2011	
Orientation	6-9 July		
Classes begin	12 July	Classes begin	28 February
Mid-semester break	30 Aug-5 Sept	Classes end	3 June
Classes end	15 October	Exam period	7-22 June
Exam period	18 Oct-13 Nov		



Services

Visit the Student Exchange website :

http://www.otago.ac.nz/study/student_exchange/visitingexchangestudents.html

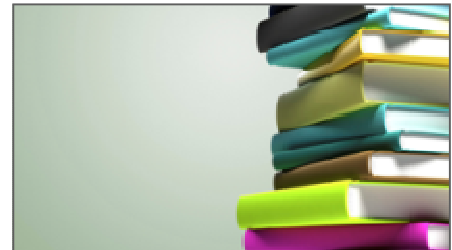


Course Requirements

Courses at Otago are called papers. Students are expected to take 54 points per semester.

More information available at : <http://www.otago.ac.nz/study/workload.html>

On-line course catalogue : <http://www.otago.ac.nz/courses/subjects>

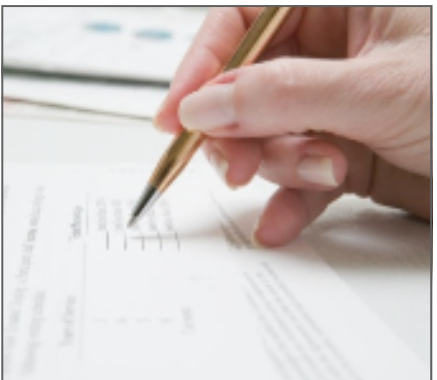


Application

1 February 2010 Deadline for submitting internal application form accompanied by personal statement, transcript of studies to date and 2 academic references.

8 February 2010 Allocation of host institution made (in liaison with Study Abroad Co-ordinators). Students notified and provided with relevant host institution application form.

1 March 2010 Deadline for submitting host institution application form and any additional supporting documentation required (e.g. transcript, photographs, financial statements, housing applications etc).



Anne Worth:

International Office, 8th Floor, Laver Building, North Park Road, Exeter, EX4 4QE.

Tel: +44 1392 725002

Fax: +44 1392 723856

Email: A.R.Worth@exeter.ac.uk

All information is subject to change and is given here to assist students in finding out about the host institution for themselves. Quoted costs should be taken as guidelines until confirmed by the host institution. It is the responsibility of the student to research, confirm and add to the details listed above.

October 2009