

Vassar College

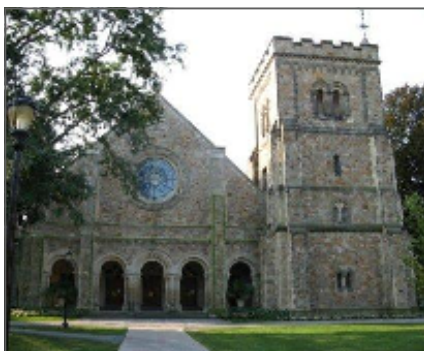
Poughkeepsie
USA



The University

Vassar College was founded in 1861 and is considered to be one of the best liberal arts colleges in the United States. The student population is currently 2,450 with an average class size of 17 and a student—faculty ratio of 9:1. Vassar has a huge choice of clubs and societies. Sporting facilities offer an Olympic-sized swimming pool, dance studios, indoor and outdoor running tracks and tennis courts. Clubs include hiking, equestrian, bridge, choir and orchestra, to name just a few.

University Website: www.vassar.edu



Location

The College is located in the scenic Hudson Valley, 75 miles from New York City, in Poughkeepsie (population 100,000). Vassar is in a residential area 3 miles from the city centre. The campus is maintained as an arboretum on a 1,000 acre site. Vassar enjoys a temperate climate with temperatures of -1°C in the winter and, although not in the snow belt, a modest snowfall is normal. Temperatures in the summer months average 24°C .

Travel

All major airports in the New York City area are accessible, as well as Newburgh and White Plains. The Metro North commuter train provides a regular rail service to Grand Central Station in New York City.



Immigration

A student visa is required. Cost of application is US\$131 (£79 approx.). More information available at the embassy website: www.usembassy.org.uk/cons_new/visa/niv/japply.html. In addition applicants are required to pay the SEVIS I-901 fee <http://www.american.edu/ocl/iss/ Applying-for-a-visa.cfm>. Work permitted on campus only.

Housing

Housing options range from single rooms in a dorm, or a double or quad suite—the suites consist of single rooms with shared common areas. The cost of housing for the 2009/10 academic year were \$5,090 per year and the standard meal plan was \$4,450 per year.

<http://residentiallife.vassar.edu/>





Health Insurance

Compulsory for all. Approx. \$934 for 12 months (2009/10) from Vassar, but you can provide your own insurance, but it must be comparable and cover medical evacuation and repatriation.

Term Dates <http://www.vassar.edu/academic/calendar/index.html>

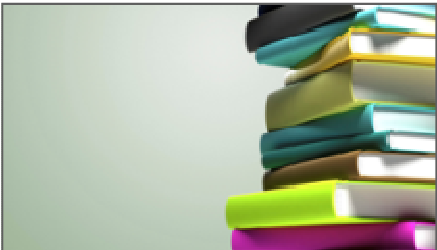
Fall Semester 1 2010		Spring Semester 2 2011	
Orientation begins	Date tbc		
Classes begin	30 August	Classes begin	19 January
October break	15-24 October	Spring break	5-20 March
Thanksgiving	24-28 November	Classes end	3 May
Classes end	8 December	Exam period	11-17 May
Exam period	13-17 December		



Course Requirements

To maintain your student visa you must take a minimum of 12 hours credits per semester. This equates to 4 courses.

Module descriptions available: <http://catalogue.vassar.edu/>



Application

- 1 February 2010** Deadline for submitting internal application form accompanied by personal statement, transcript of studies to date and 2 academic references.
- 8 February 2010** Allocation of host institution made (in liaison with Study Abroad Co-ordinators). Students notified and provided with relevant host institution application form.
- 1 March 2010** Deadline for submitting host institution application form and any additional supporting documentation required (e.g. transcript, photographs, financial statements, housing applications etc).



Anne Worth:
International Office, 8th Floor, Laver Building, North Park Road, Exeter, EX4 4QE.
Tel: +44 1392 725002
Fax: +44 1392 723856
Email: A.R.Worth@exeter.ac.uk