

University of Wollongong

New South Wales Australia



The University

The University of Wollongong (pronounced Wool-n-gong) is located in the city of Wollongong, which is part of the Greater Sydney Region. While its origins can be traced to 1951, it was in 1975 that the University of Wollongong became Australia's eighteenth university. It is an innovative, multicultural, cosmopolitan and world-renowned institution with a student population of over 26,000.

University Website: www.uow.edu.au/



Location

The city of Wollongong is located 80km south of Sydney (about an hour by bus) on the southern New South Wales coast and the University of Wollongong campus is 5km from Wollongong city centre and is easily reached by public transport. The Illawarra region, including the city of Wollongong, has a population of 300,000. The campus is situated between the mountains and the Pacific Ocean in a peaceful, landscaped setting.

Travel

The University provides a free airport meeting service to transport international students from Sydney International Airport to Wollongong. You must lodge an online application at least two weeks before your arrival in Australia.

Details at: <http://www.uow.edu.au/future/studyabroad/airportpickup/index.html>

Sydney International Airport: www.sydneyairport.com.au/SACL/default.htm



Immigration

The University of Exeter produces a visa factsheet for students travelling to Australia and, including approximate costs.

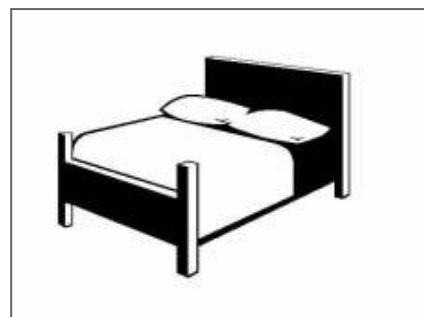
For further information:

<http://www.exeter.ac.uk/international/abroad/exchange/visa/>

Housing

Prices range from \$156 per week for self-catered accommodation and from \$218 for catered accommodation per semester.

www.uow.edu.au/about/accommodation/





Health Insurance

You must have Overseas Student Health Cover and you will need evidence of this before you apply for your visa. Cost: \$210 for up to six months and \$420 for 12 months. Further details can be found on the website: Further details can be found on the website: www.oshcworldcare.com.au

Term Dates

Please note the Australian academic year begins in March so you will be starting in Semester 2.

Semester 2 2010		Semester 1 2012	tbc
Orientation Week	18-22 July	Semester 1 begins	27 February
Classes begin	25 July	Easter Break	6-15 April
Mid Semester Break	26 Sept-3 Oct	Classes End	1 June
Classes end	4 October	Exam period	9-21 June
Exam period	5-17 November		



Services

Information available from the Study Abroad Office:

<http://www.uow.edu.au/future/studyabroad/index.html>

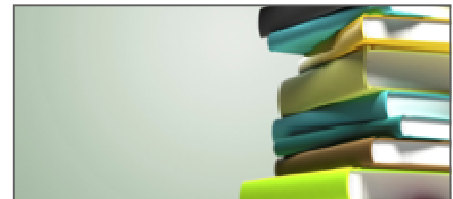
Student handbook: <http://www.uow.edu.au/content/groups/public/@web/@unia/documents/doc/uow047594.pdf>



Courses

Normal full-time course load is 48 credit points over two sessions.

Planning your Program of Study information: <http://www.uow.edu.au/future/studyabroad/yourprogram/index.html>. See also: <http://www.uow.edu.au/content/groups/public/@web/@unia/documents/doc/uow047594.pdf>



Application

- 1 February 2011** Deadline for submitting internal application form accompanied by personal statement, transcript of studies to date and 2 academic references.
- 8 February 2011** Allocation of host institution made (in liaison with Study Abroad Co-ordinators). Students notified and provided with relevant host institution application form.
- 1 March 2011** Deadline for submitting host institution application form and any additional supporting documentation required (transcript, photographs, financial statements, housing applications)



Anne Worth:

International Office, 8th Floor, Laver Building, North Park Road, Exeter, EX4 4QE.

Tel: +44 1392 729002

Fax: +44 1392 723856

Email: A.R.Worth@exeter.ac.uk

UOW CRICOS Provider No. 00102E

All information is subject to change and is given here to assist students in finding out about the host institution for themselves. Quoted costs should be taken as guidelines until confirmed by the host institution. It is the responsibility of the student to research, confirm and add to the details listed above. October 2010