

Add Xerox queue on OSX UoE device

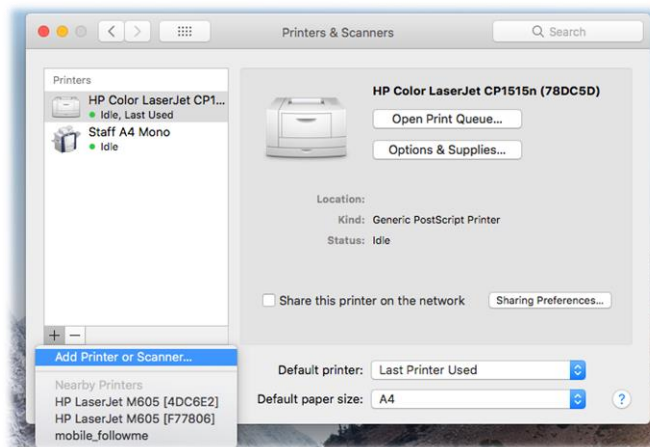
Pre-Requisite:

Download the Xerox MacOSX Common Print Driver Installer from:

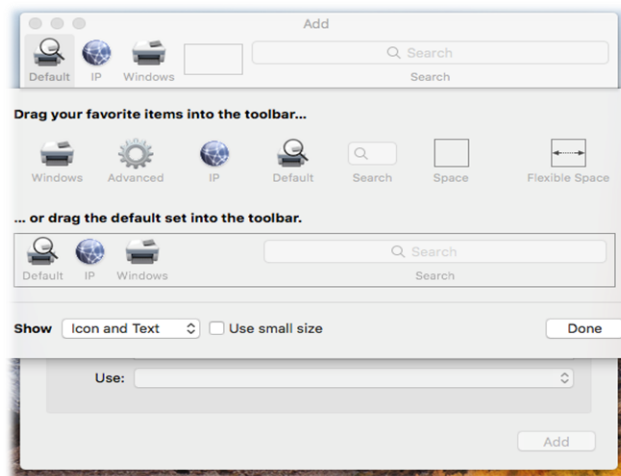
https://www.support.xerox.com/support/altalink-c8000-series/downloads/enus.html?operatingSystem=macOS10_14&fileLanguage=en&&associateProduct=C8000-series-built-in-controller

Run the pkg installer up to 'Select Printer' but go no further! (leave it spinning)

- 1) Go to Apple>System Preferences>Printers & Scanners
Select + then click on 'Add Printer or Scanner' (**mobile_followme should only be used for personal devices!**)

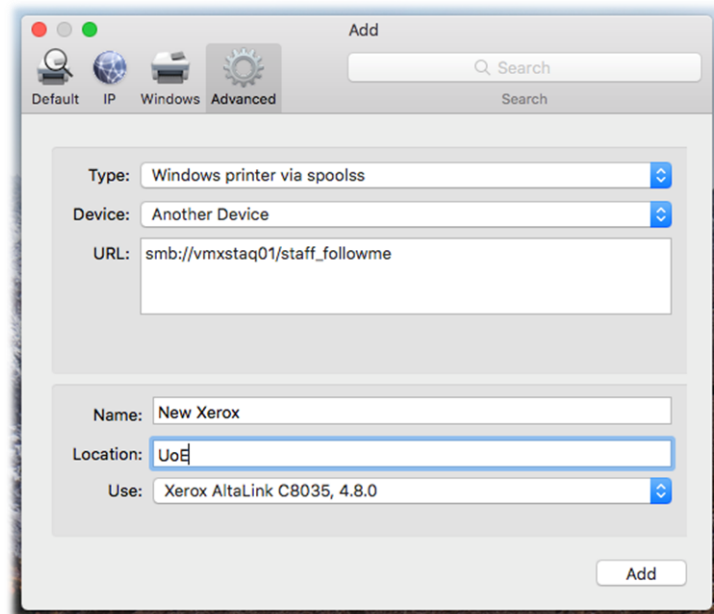


- 2) If the advanced cog icon is already on the toolbar proceed to step 3. If not then add it as follows: Ctrl + click on the Add window toolbar and select Customise Toolbar.

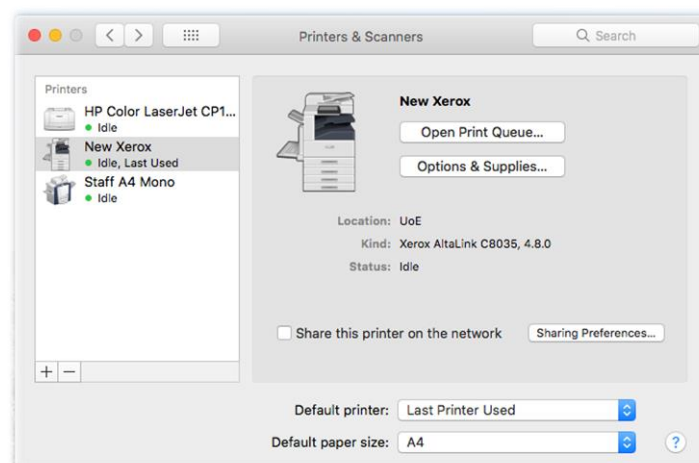


Drag the 'Advanced' cog icon to the vacant box area in the main Add window toolbar.
Click Done

- 3) Click the advanced icon on the toolbar and wait while it searches for printers
When done change type from whatever is shown to Windows printer via spoolss
Edit the URL to smb://vmxstaq01/staff_followme
Assign a friendly name and location of your choice
In Use 'choose driver' change to Select Software and then select the Xerox Alta Link C8035
If you have done everything correctly your Add window should now look similar to below:



Click the Add button and wait while your system sets up the new printer - this may take a minute or two. When done you should now see the new printer in the main Printers and Scanners window and it will be selected as the default option in your applications. You may now also close the driver installer pkg.



You can select this printer in the usual way when printing documents. The first time you use it you will be prompted for your UoE username and password which you may also select to save in your Mac Keychain.