

Health and Life Sciences

Ian Watson
Strategic Marketing Business Partner



Faculty of Health and Life Sciences

Healthier: Making key breakthroughs to transform human and health and wellbeing

- *Research-led teaching*
- Encompasses the Medical School, Clinical and Biomedical, Health and Community Sciences, Public Health and Sports Sciences, Health and Care Professions, Biosciences, and Psychology
- Top 25 in the world for Sports and Health Sciences
- Top 100 in the world for Psychology
- Top 125 in the world for Life Sciences
- Top 150 in the world for Nursing
- Top 175 in the world for Clinical and Health
- Part of the prestigious Russell Group of UK universities
- Teaching Excellence Framework (TEF) GOLD



<https://www.exeter.ac.uk/faculties/hls/index.php>



Faculty of Health and Life Sciences

Top 10 in
Psychology

TOP 10

(The Times and Sunday Times
Good University Guide 2023)

Top 5 in Sports
Science

TOP 5

(5th in The Times and Sunday
Times Good University Guide
2023)

Top 15 in Medical
Imaging



(The Complete University Guide
2024)

Top 20 in the
Biosciences



(The Guardian University Guide
2023)

Many of our programmes are accredited by professional bodies, including the General Medical Council, British Psychological Society, Nursing & Midwifery Council, Health & Care Professions Council and the Society & College of Radiographers.

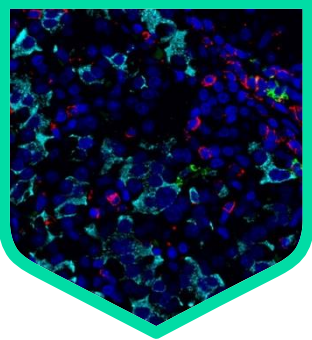
Faculty Facts

- A diverse and international cohort of 6,000 students in 2022/23
- 900 academic and research staff
- 100% of our research impact in the areas of Life Sciences and Health was rated world-leading or internationally excellent (REF 2021)
- £64.7m in research awards in 2021/22
- 85.7 citations per research paper (QS Life Sciences and Medicine ranking 2022)



Our research in
Medicine and Health

Diabetes



Primary Care



Genomics



Cancer Diagnosis



**Cardiac
Rehabilitation**



Child Mental Health



Nature and Health



Dementia

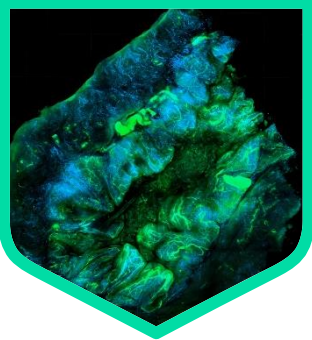


**Antimicrobial
Resistance**

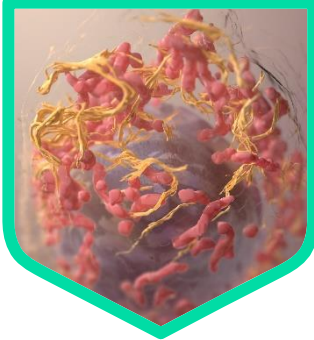


Our research in
Biosciences

**Cell and
Developmental Biology**



**Biochemistry and
Molecular Microbiology**



**Environmental
Biology**



**Medical
Mycology**



**Plant and
Algal Biology**





University
of Exeter

Our research in **Psychology**

Animal Behaviour



Clinical



Cognition



**Social and
Organisational**



**Research in Ageing
and Cognitive Health**



**Clinical
Neuropsychology
Research**



**Cognitive Control and
Associative Learning**



Mood Disorders



**Psychopharmacology
and Addiction**





University
of Exeter

Our research in

Sport and Health Sciences

Psychology



Biomechanics



BioActivEx



**Physical Activity &
Health through the lifespan**



**Virtual Immersive
Training & Learning**



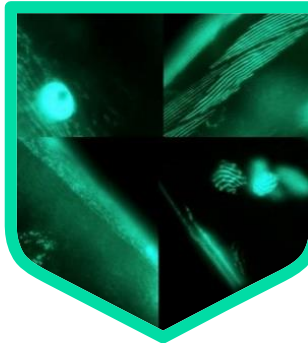
**Children's Health &
Exercise Research Centre**



**Applied Physiology,
Nutrition & Metabolism**



C Elegans



**Nutritional
Physiology**



St. Luke's Campus



Streatham Campus





2234











15LS#
0000000

Hokanson® 50
SERIAL: WVA 80000 USA CN
CE

1 2 3 4 5 6 7 8 9 10 11 12 13 14 15 16 17 18 19 20 21 22 23 24 25 26 27 28 29 30 31 32 33 34 35 36 37 38 39 40 41 42 43 44 45 46 47 48 49 50 51 52 53 54 55 56 57 58 59 60 61 62 63 64 65 66 67 68 69 70 71 72 73 74 75 76 77 78 79 80 81 82 83 84 85 86 87 88 89 90 91 92 93 94 95 96 97 98 99 100



Station 02

WOMEN'S FOOTBALL

PLAYER LAYER

EXETER

Station 02

Station 02

Lode Corival cycle

EXETER

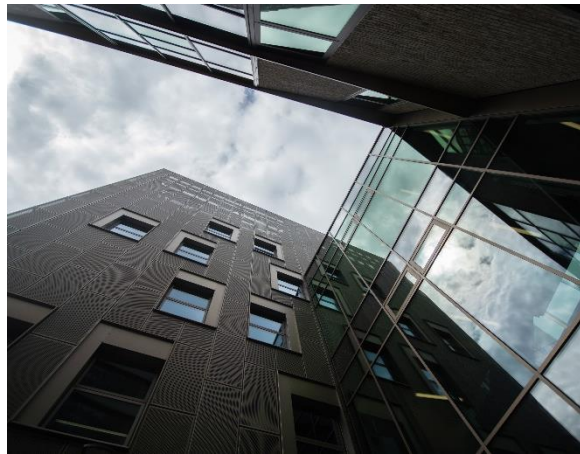
Lode Corival cycle

Key Buildings and Research Institutes



Environment and Sustainability Institute (ESI)

Our researchers share laboratories with the Environment and Sustainability Institute at the Penryn campus.



Living Systems Institute (LSI)

The Living Systems Institute is a world-class, next generation, collaborative research community in which the Faculty plays a crucial role.



Global Systems Institute (GSI)

The Global Systems Institute is thought-leading in understanding global changes, solving global challenges and helping create a flourishing future world together, through transformative research, education and impact.

Key Buildings and Research Institutes



Knowledge Spa

The Knowledge Spa is located at the Royal Cornwall Hospital in Truro. It is also the home of the European Centre for Environment & Human Health.



RILD Building

The Research, Innovation, Learning and Development (RILD) building is a health education and research centre based at the Royal Devon & Exeter Hospital in Exeter (Royal Devon University Healthcare NHS Foundation Trust).



South Cloisters

The South Cloisters building is home to the Medical Imaging programme, which is routinely named as the best of its kind in the country.

Key Buildings and Research Institutes



Schools for Primary and Public Health Research

The NIHR School for Primary Research and the NIHR School for Public Health Research are national networks which aim to influence and shape health policy.



PenARC

NIHR PenARC aims to improve lives and the quality of health and social care in South West England through applied research.



Clinical Trial Facilities

Our Exeter NIHR Clinical Research Facility and the Exeter Clinical Trials Unit ensure our research is of the highest quality, engaging patients to improve health in the region and worldwide

Key Buildings and Research Institutes



NIHR Biomedical Research Centre

Translating scientific discoveries into benefits for patients with key themes of Neurodegeneration, Rehabilitation, Diabetes, Genetics, and Clinical Mycology.



Washington Singer Psychology Labs

State-of-the-art equipment to conduct research in cognitive electrophysiology, eye-tracking, transcranial magnetic stimulation (TMS) and magnetic resonance imaging (MRI).



Henry Wellcome Mood Disorders Centre

Created through a partnership between the NHS and the University of Exeter, the Mood Disorders Centre conducts psychological research and the assessment, treatment and training for the benefit of people who suffer from depression.

Key Buildings and Research Institutes



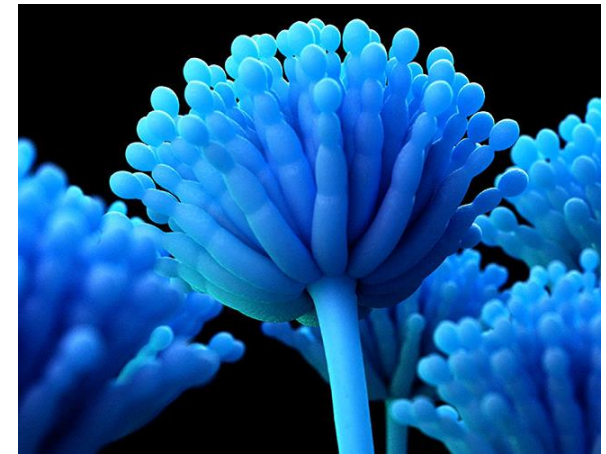
The Mireille Gillings Neuroimaging Centre

The Mireille Gillings Neuroimaging Centre provides state of the art MRI scanning for research, clinical diagnosis and therapy and PET scanning for research purposes.



Aquatic Resource Centre (ARC)

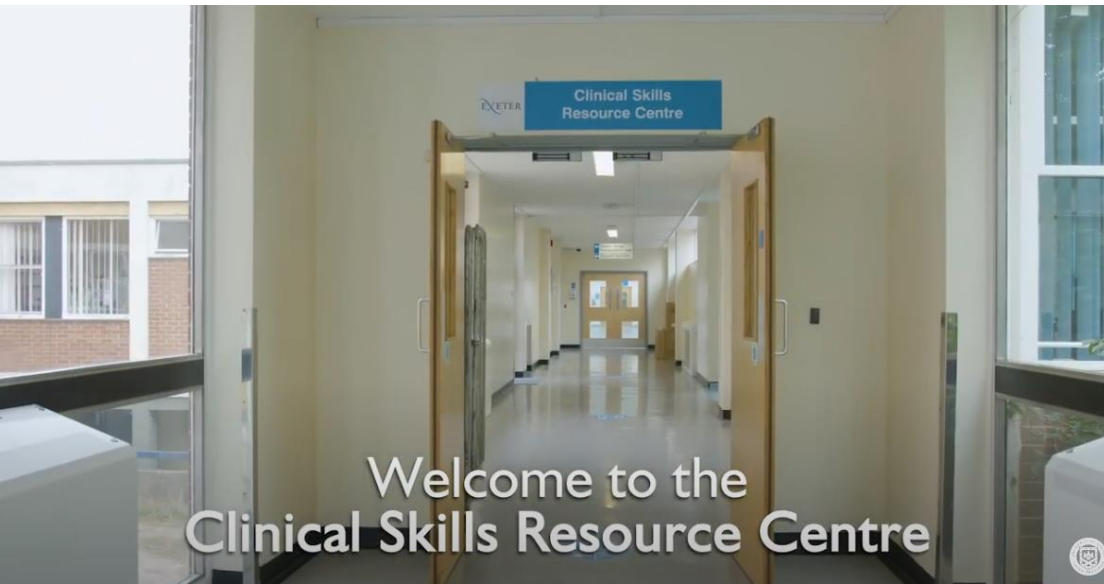
Over £12 million has been invested in the Aquatic Resources Centre (ARC) to provide a world-class teaching and research facility.



MRC Centre for Medical Mycology

The MRC CMM is based in the Geoffrey Pope building and works across the entire Faculty of Health and Life Sciences.

Clinical Skills Resource Centre



Welcome to the
Clinical Skills Resource Centre

Our own 'sim' hospital

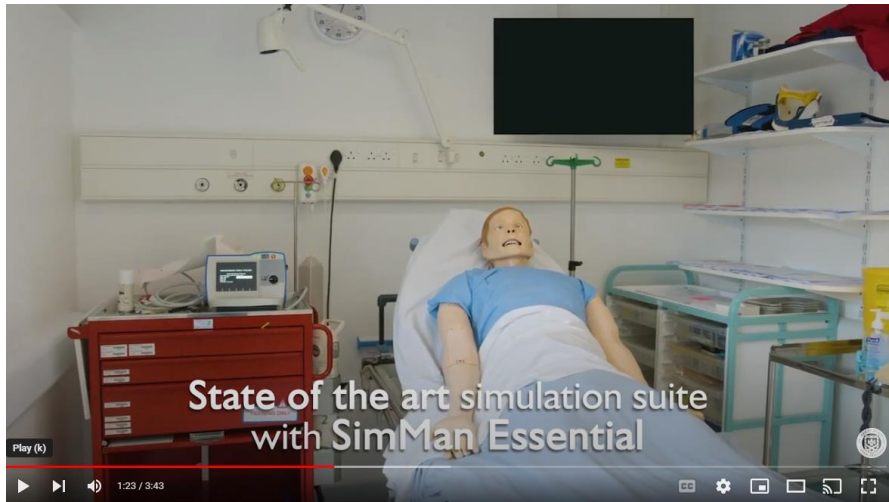


Students can book Self-Directed Learning space
and equipment from the end of September

Clinical Skills Resource Centre



Clinical Skills Resource Centre



<https://www.youtube.com/watch?v=H6nbie2e700&t=29s>



This Presentation

- Discontinued Programmes
- New Programmes for last cycle (2023)
- New Programmes for 2024
- New Programmes 2025
- Big International Selling Programmes



Thank you!

- HLS UGI apps up 16%
- HLS PGT apps up 59%



Discontinued Programmes (all UG)

For 2024:

- BSc Human Biosciences
- BSc Psychology with Exercise and Sport Science
- MSci Sport and Exercise Science (integrated Masters)



New Programmes for 2023

- MSc Clinical Psychology
- MSc Neuroscience
- MSc Sports Management
- PG Cert Psychedelics (Jan 24 start)



New Programmes for 2024

- MSc Psychedelics
- MSc Advanced Biosciences with Business / Enterprise
- Master of Public Health new pathways
 - Public Mental Health
 - Metabolic Health
- “..with Data Science” for PGT progs
- Expanding Psychology Conversion (face to face and online)



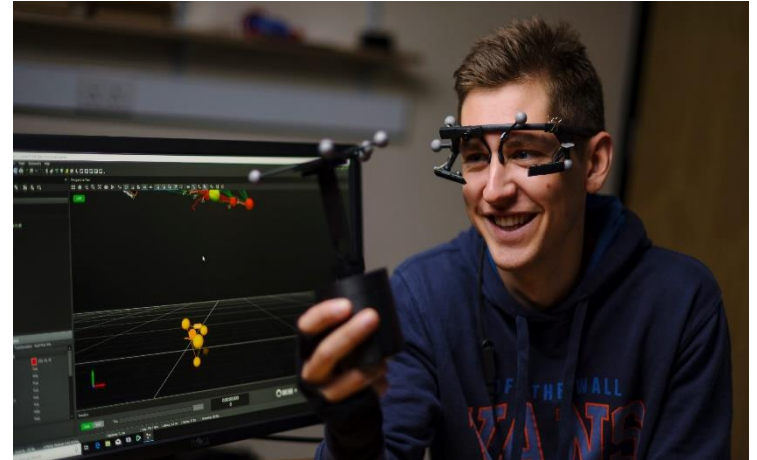
Further Out....

- BSc Molecular Biosciences and Biotechnology
- PGT Advanced Physiotherapy
- Biomedical Sciences
- Child Health / Mental Health



Big International Programmes

- Master of Public Health
- Anything Psychology
- MSc Health Data Science
- MSc Health Leadership and Management
- MSc Genomic Medicine
- MSc Sport and Health Sciences
- MSc Sport and Exercise Medicine
- MSc Sports Management
- MSc Advanced Biosciences
- MSc Extreme Medicine



Master of Public Health

- In collaboration with the Business School
- World-renowned public health experts
- Meets common core requirements of the Association of Schools and Programs of Public Health (ASPPH)
- Specialist pathways
 - Global Health
 - Pandemics
 - Public Mental Health (2024)
 - Metabolics (2024)
- Key programme for Faculty development / post-COVID world



Psychology

- Psychology Conversion (face to face and online)
- Clinical Psychology
- Social and Organisational Psychology
- Facilities:
 - 120 staff, over 500 PGT students
 - Specialist laboratories
 - Audio-visual suite
 - Dedicated PGT computer lab
- As well as PGT, UG programmes also very popular.



Health Data Science

- ‘Big Data’ / AI – unlock health knowledge from complex datasets
- One of only six UK institutions chosen to deliver this training for Health Data Research UK
- No medical / health background required
 - Some statistics / coding background required
- Research projects using real health data sourced from biobanks, genomic and health services resources



Advanced Biosciences

- Advanced laboratory skills and data processing training
- Students utilise world-leading research facilities including the Aquatic Resources Centre, Bioimaging Centre, Exeter Centre for Cytomics and the Exeter Sequencing Facility
- Pathways in Animal Biology, Microbiology and Infectious Disease, and Frontiers in Plant Science.
 - With Business / Enterprise in 2024



Sports Management

- Sports + Business
 - Marketing
 - Entrepreneurship
 - Sport and exercise psychology
 - Sport and leadership
- In collaboration with the Business School
- Access links with:
 - Exeter Chiefs Rugby Union Club
 - Exeter City Football Club
 - Yeovil Town Women's F.C.
 - Commando Training Centre Royal Marines
- Exeter currently top 5 in UK uni sports
- First cohort 2023



Extreme Medicine

- Unique programme for doctors, paramedics, nurses and health professionals
 - Humanitarian medicine
 - Expedition and wilderness medicine
 - Disaster response
 - Medical cover for security operations
 - Film location support
 - Remote research or logistics
- Modules include:
 - Alpine Medicine (Chamonix)
 - Alpine Medicine (Slovenia)
 - Desert Medicine (Oman)
 - Expedition & Wilderness Medicine (Corfe Castle, UK)
 - Human Factors (Dartmoor, UK)
 - Jungle Medicine (Costa Rica)
 - Mountain Medicine (Nepal)
 - Ocean Medicine (Brixham, UK)
 - Polar Medicine (Norway)
 - Search & Rescue (Northumberland, UK)
- Full time or part-time over 2 or 3 years



University
of Exeter

Finally a word about UG

BSc Neuroscience

- World-renowned research community
- Small group learning
- Includes introductions to genetics, data science and neuropharmacology
- Alternative to Psychology

BSc Medical Sciences

- Includes clinical trials and health economics
- Optional named specialisms in degree title
 - Health Research
 - Human Genomics
 - Pharmacology and Therapeutics
 - Neuroscience
- Optional professional training year abroad or in UK
- Wide range of healthcare careers





University
of Exeter



Thank you