

The challenge of mitigation

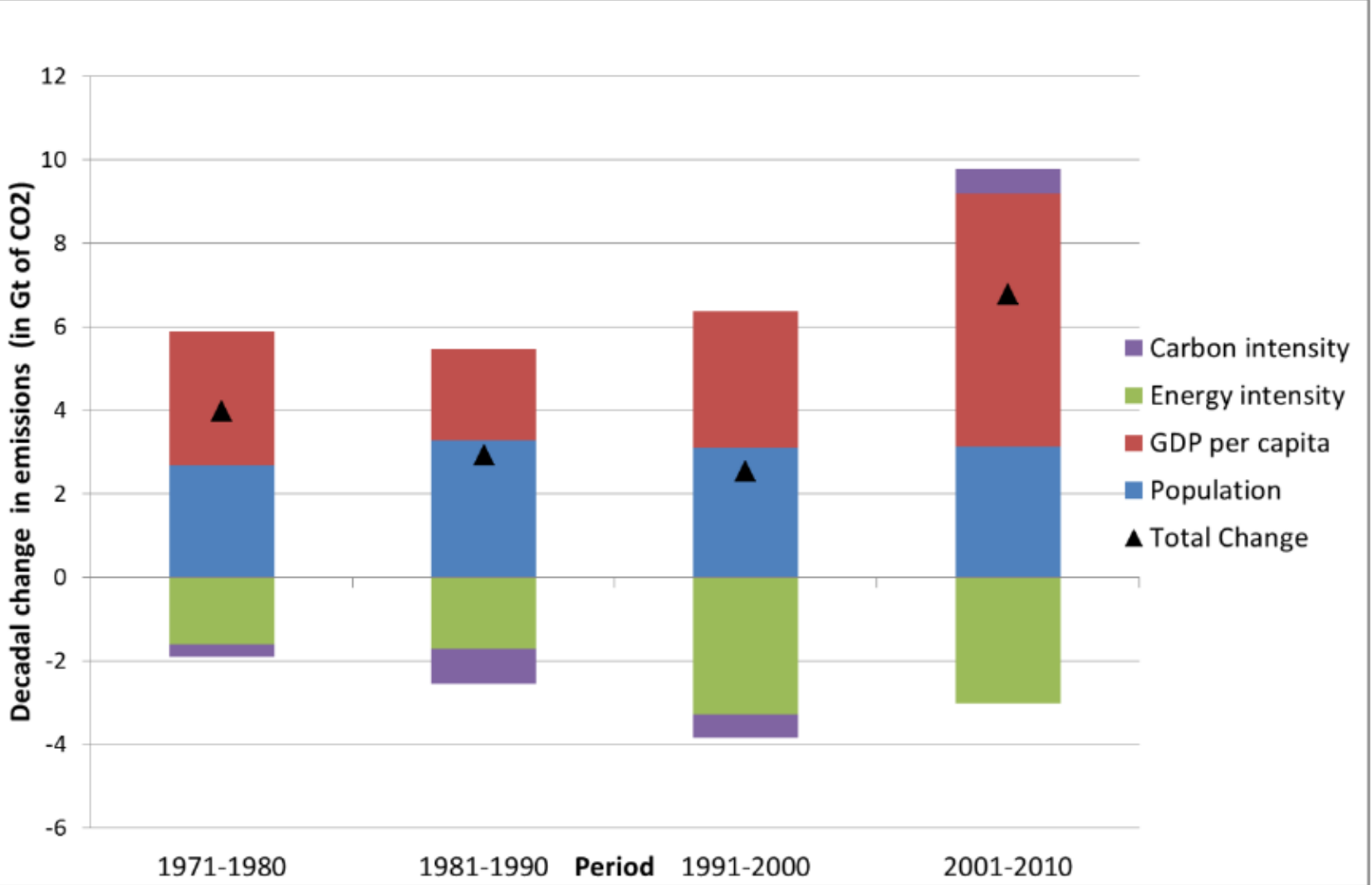
Professor John Barrett

Professor of Sustainability Research,
University of Leeds

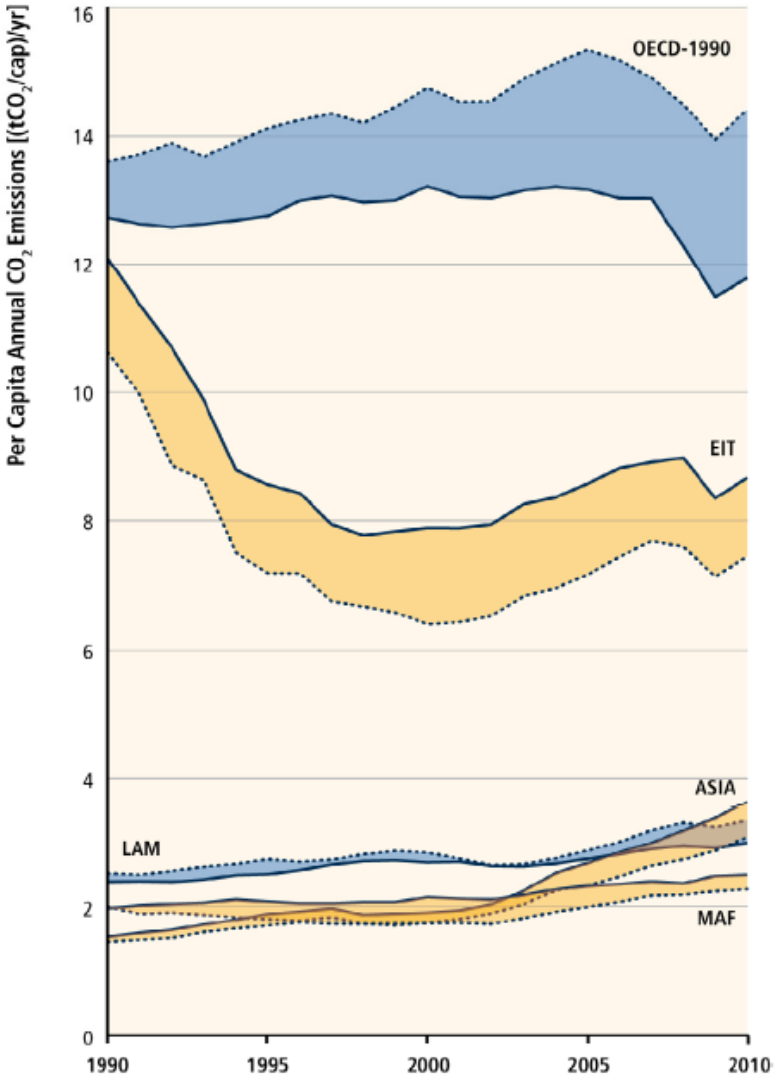
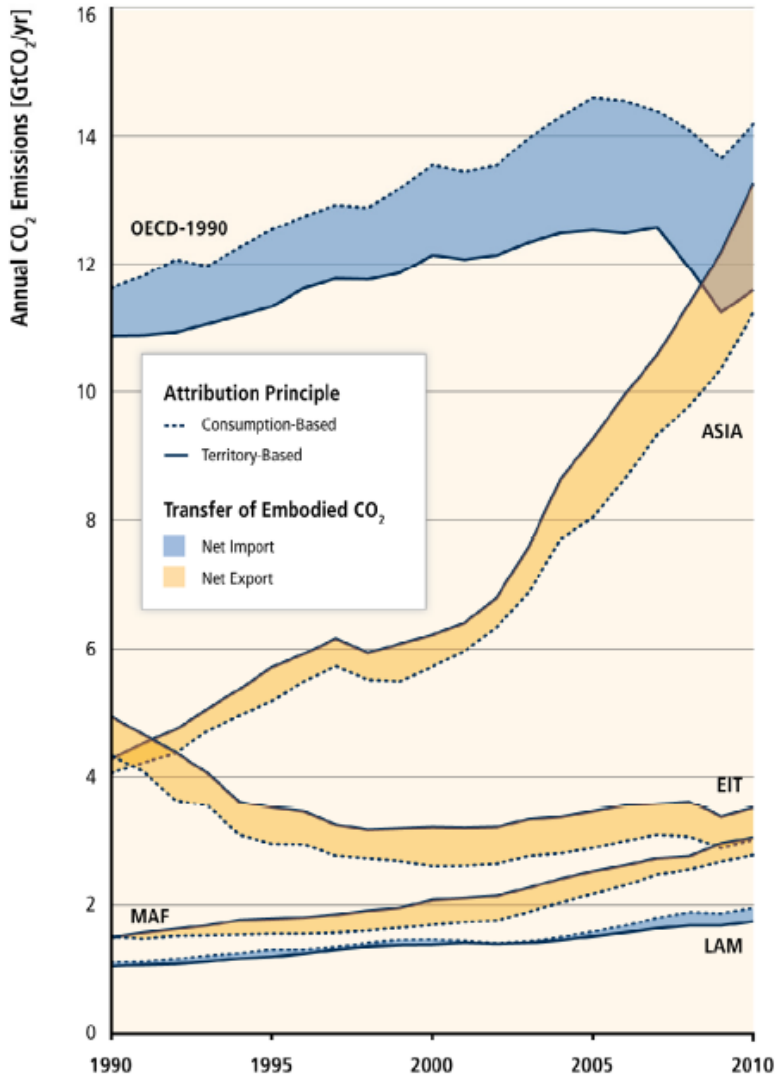


Driver of emissions

Final Demand as a driver of emissions



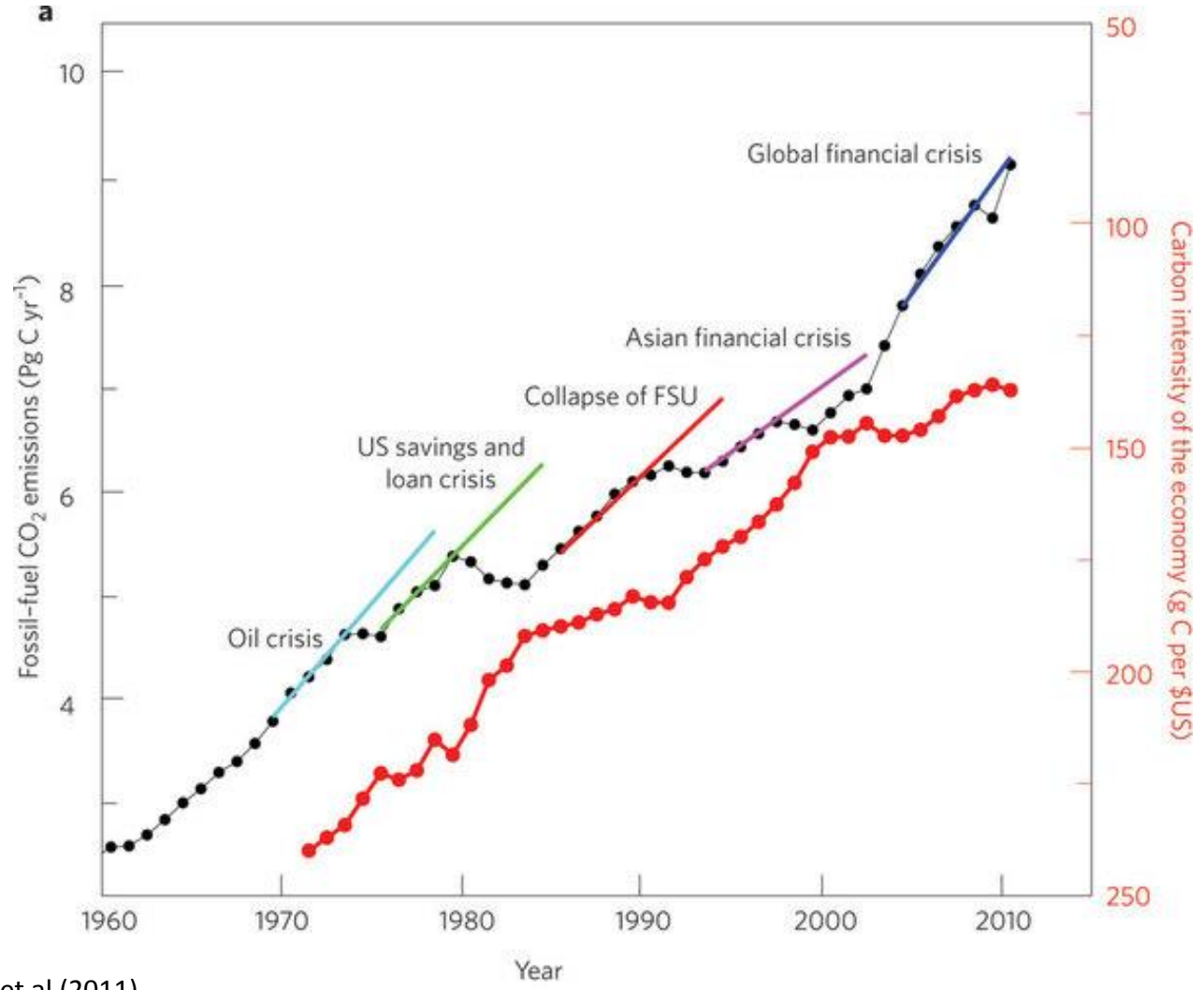
Rate of decoupling



Effects of past economic crises



UNIVERSITY OF LEEDS



Source: Peters et al (2011)



UNIVERSITY OF LEEDS

Carbon budgets for the UK

Revisit UK Carbon Budgets for RCP 2.6



UNIVERSITY OF LEEDS

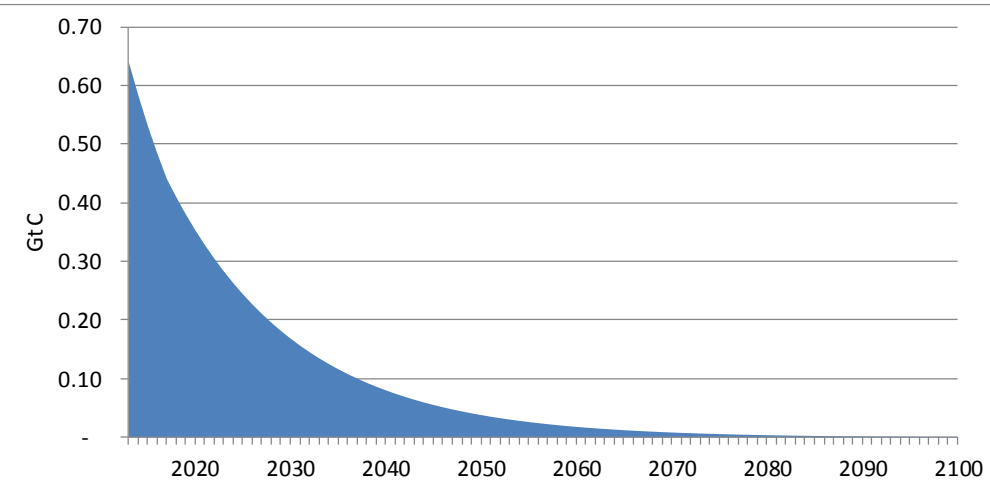
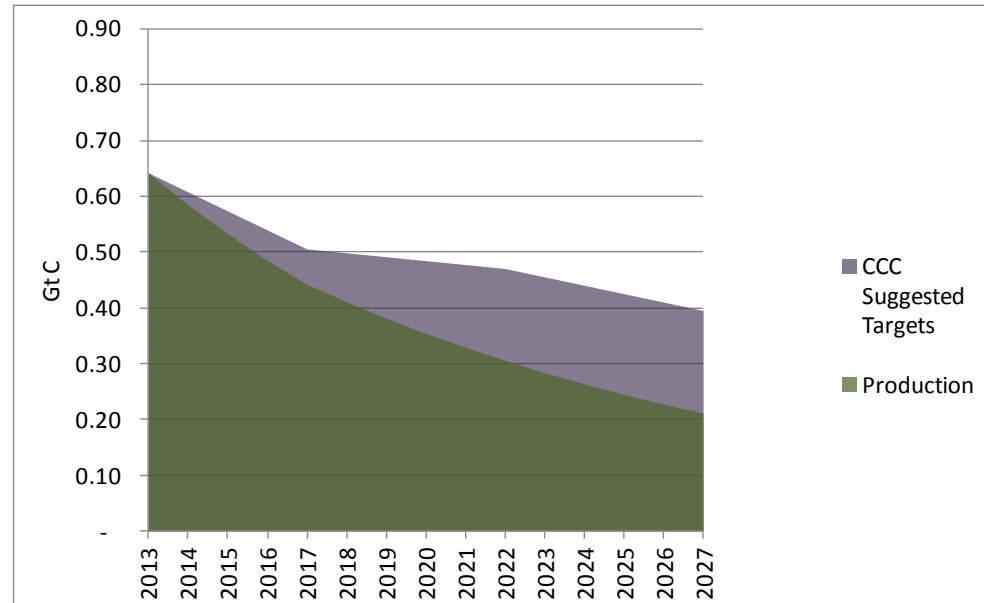


Figure 1: UK Emissions 2012 – 2100 to achieve equitable 2 degree benchmark with 67% probability

95% reduction by 2050

Figure 2: Comparison of 2 degree equitable reduction with CCC budgets

80% reduction by 2032



Climate is a short-term issue under RCP 2.6

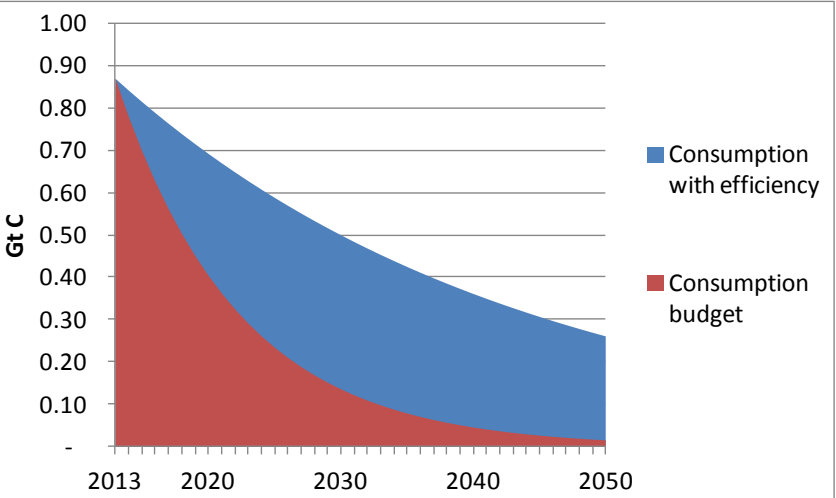
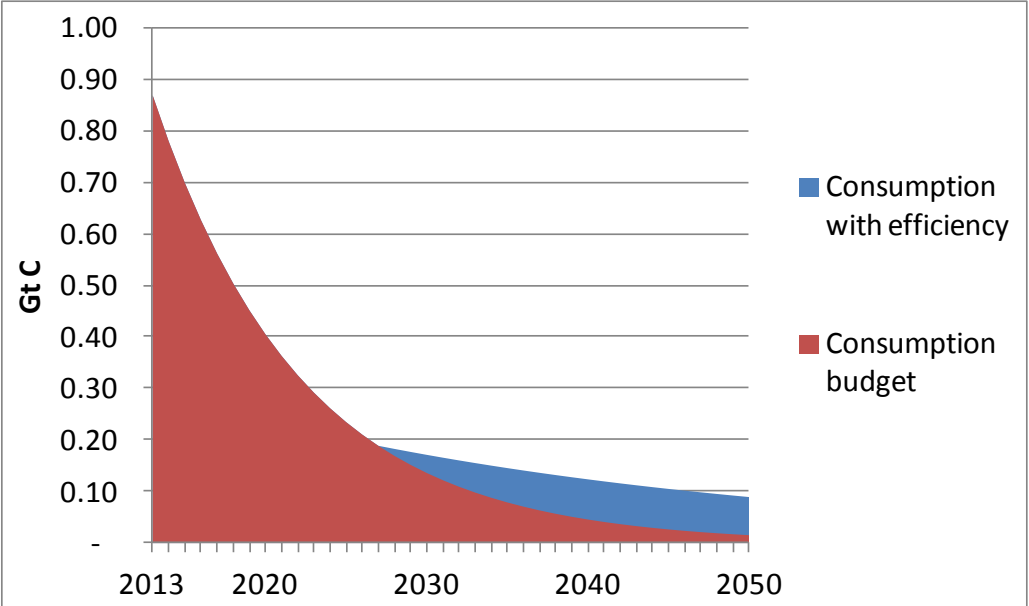


Figure 1: UK Consumption Emissions with 3.2% per year efficiency improvements

Figure 2: UK Consumption Emissions with necessary annual reduction achieved to 2027



Source: Own Calculations



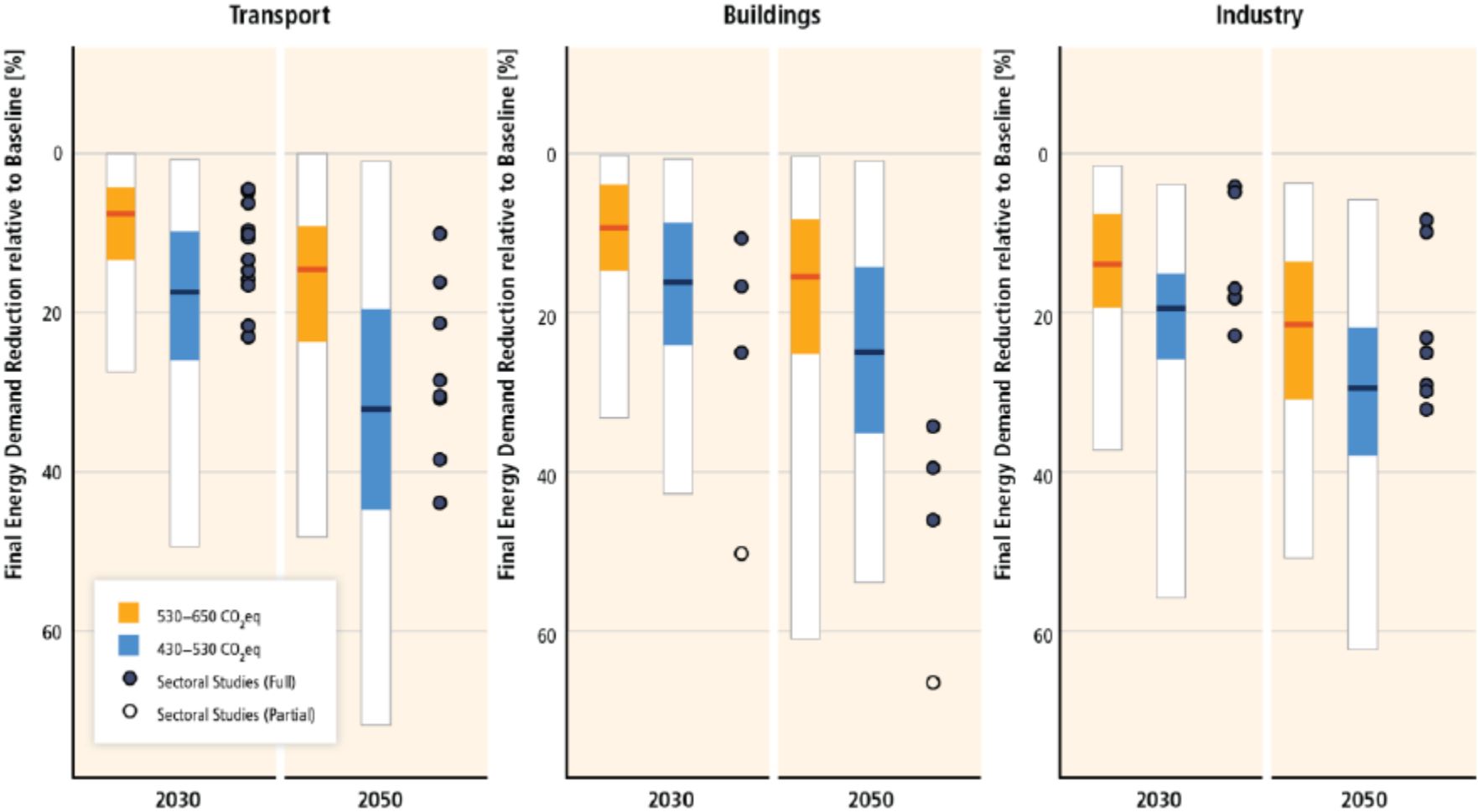
UNIVERSITY OF LEEDS

Demand reduction strategies for the UK

Demand responses



UNIVERSITY OF LEEDS

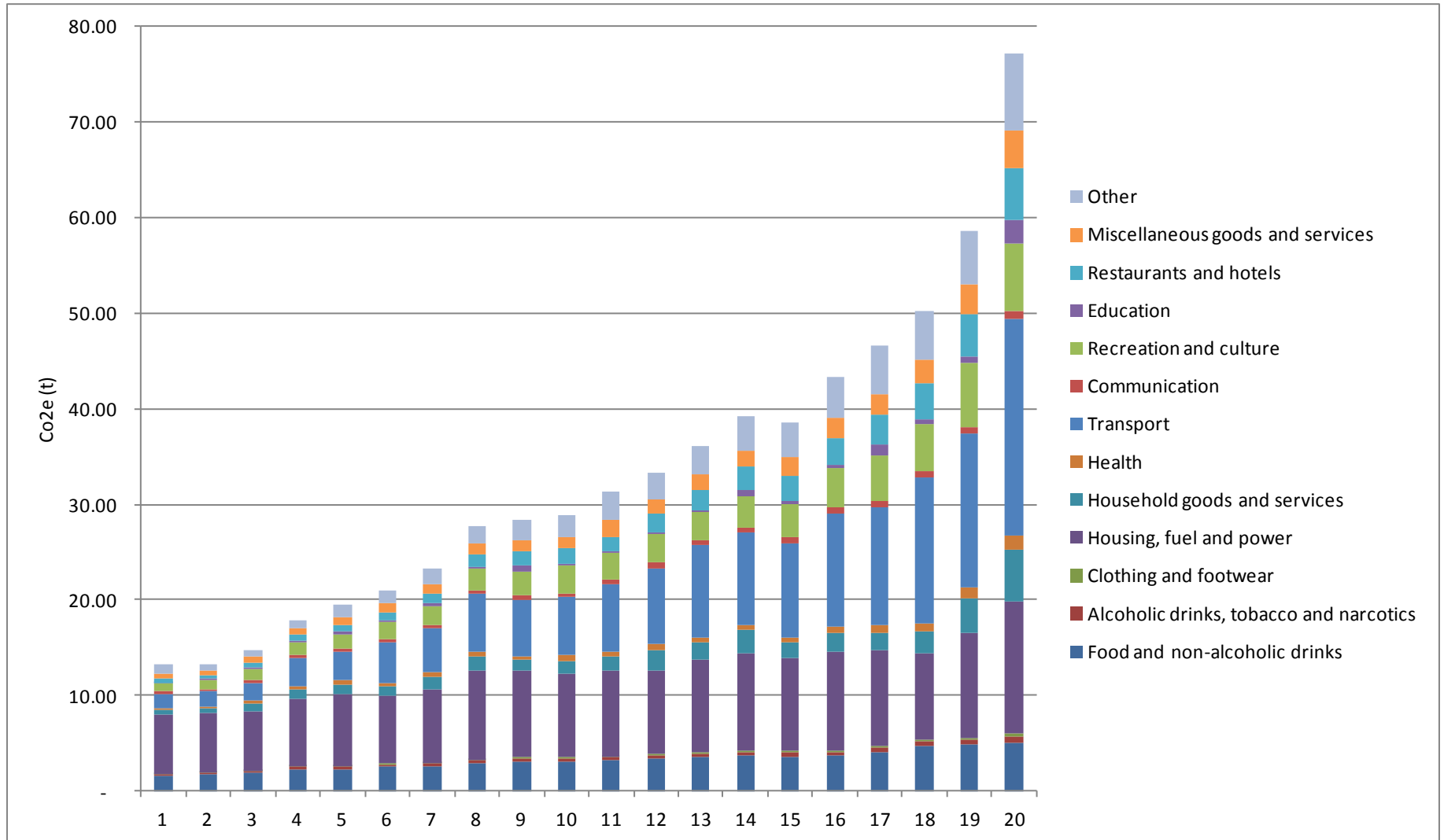


Source: IPCC SPM WG3

Groups affected by mitigation



UNIVERSITY OF LEEDS





- Difficult and under explored relationship between consumption and emissions
- Distribution of responsibility remains a crucial question
- Increased reduction by 2030 changes the policy landscape