

INTO 

UNIVERSITY OF
EXETER

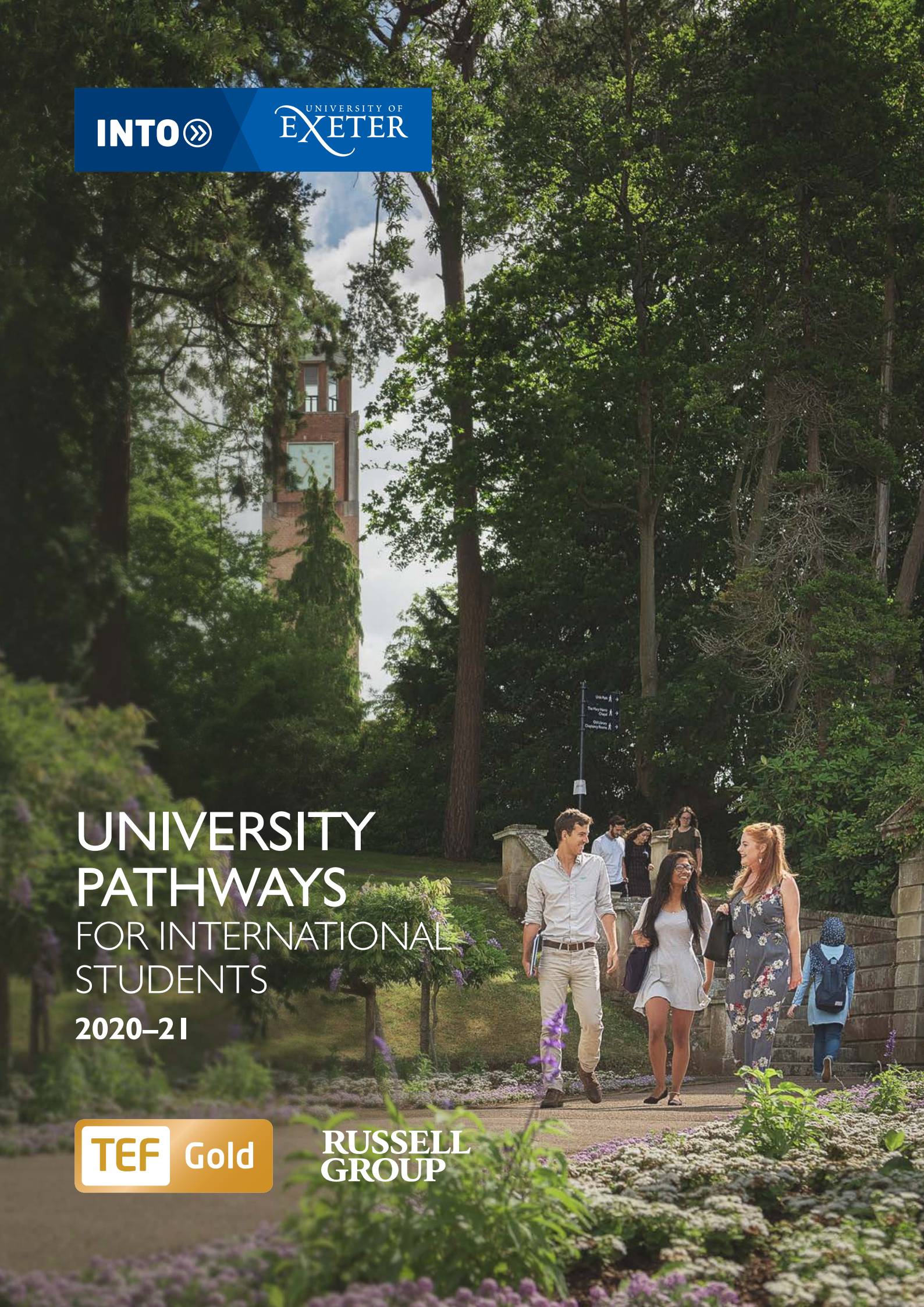
UNIVERSITY PATHWAYS FOR INTERNATIONAL STUDENTS

2020–21

TEF

Gold

**RUSSELL
GROUP**



MAKING THE EXCEPTIONAL HAPPEN >

Welcome to INTO University of Exeter – your pathway to a degree from the University of Exeter. We give international students like you the chance to study at an institution renowned for its outstanding teaching and graduate employability.

TOP 150

In the **Top 150** universities in the world¹

Most subjects in the UK top 10 after Cambridge and Oxford²

1ST

The Business School is **1st in the UK** for graduate outcomes³

You will study a specialist programme designed exclusively for international students and tailored to the requirements of the University. You'll complete your course at our modern Study Centre in the heart of the beautiful Streatham Campus, where you will become part of the University community from the day you arrive.

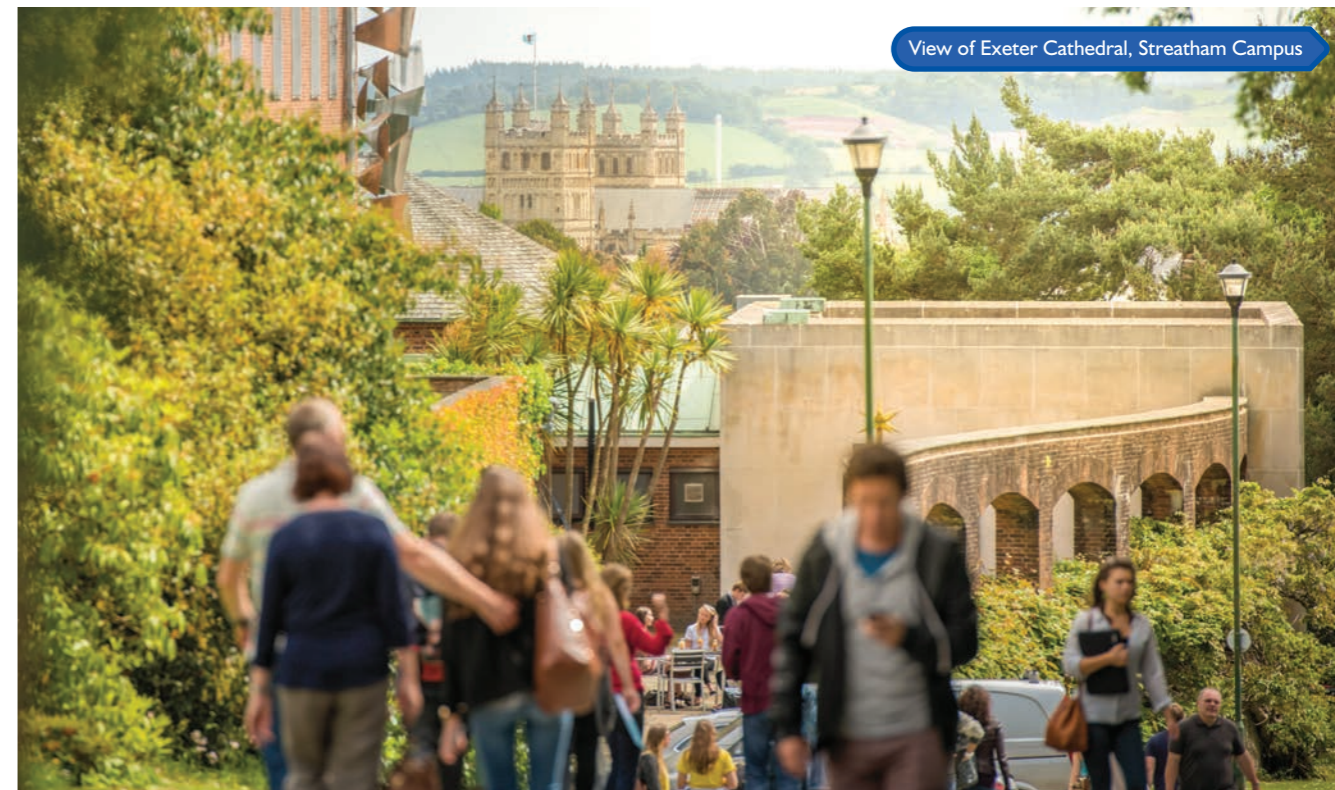
Choosing to study abroad is a big decision, but at INTO University of Exeter, we'll give you everything you need to succeed at university and beyond. Just look at our student success rates in 2017–18!

CHOOSE #INTOEXETER AND OPEN UP A LIFETIME OF OPPORTUNITIES

97% PASSED

83% of which were **ELIGIBLE** to progress

Passed: % of those who completed their pathway
Eligible: % eligible to progress to the University of Exeter of those who passed



THE UNIVERSITY OF EXETER'S TOP-RANKED SUBJECT AREAS

| | | | | |
|------------------------------------------------------------------------------|----------------------------------------------------------------|--------------------------------------------------------------------------|----------------------------------------------------------------------|-------------------------------------------------------------------------------------------------------------|
| <p>= 1st in the UK for Sport Science⁴</p> | <p>5th in the UK for English⁴</p> | <p>= 7th in the UK for Accounting and Finance⁴</p> | <p>= 8th in the UK for Business Studies⁴</p> | <p>Top 10 in the UK⁴ for Civil Engineering and Electrical Engineering⁷</p> |
| <p>= 33rd in the world for Environmental Sciences⁵</p> | <p>34th in the world for Psychology⁵</p> | <p>72nd in the world for Law⁶</p> | <p>Top 100 in the world for Life Sciences⁶</p> | <p>Top 100 in the world for Politics and International Studies⁵</p> |

¹ Times Higher Education World University Rankings 2019
² The Times and The Sunday Times Good University Guide 2019
³ HESA Destinations of Leavers from Higher Education 2016/17

⁴ The Times and The Sunday Times Good University Guide 2019
⁵ QS World University Rankings by Subject 2019
⁶ Times Higher Education World University Rankings by Subject 2019
⁷ 8th in the UK for Civil Engineering and 9th in the UK for Electrical and Electronic Engineering



WHY CHOOSE THE UNIVERSITY OF EXETER? >>

Part of the UK's elite Russell Group of research-intensive universities, the University of Exeter is globally recognised as a prestigious higher education institution of outstanding quality. Exeter students graduate with the confidence to take on the world – and you could too.

12th

in the UK

(The Times and The Sunday Times Good University Guide 2019)



In the Top 40 most international universities worldwide

(Times Higher Education World University Rankings 2019)



A diverse student community is central to our commitment to delivering an internationally excellent teaching and learning environment. The INTO Centre delivers a high quality, immersive transition to University study through specialist teaching in small classes. The completion of an INTO University of Exeter academic programme can open the door to a world of degree opportunities.

Professor Sir Steve Smith
Vice-Chancellor, University of Exeter



WORLD-CLASS TEACHING

With 29 subjects in the UK top 10¹, you are guaranteed a top education here. The University has been awarded TEF Gold for teaching quality², which means that you'll learn with experts at the forefront of their fields. The University's academic staff also carry out life-changing research – 98% of which is world-leading or internationally-recognised³ – so your teaching will be informed by important research into global issues.

TRIPLE ACCREDITED BUSINESS SCHOOL

The Business School is triple accredited by the three largest and most influential business school accreditation organisations worldwide:

- EFMD Quality Improvement System (EQUIS)
- The Association of MBAs (AMBA)
- The Association to Advance Collegiate Schools of Business (AACSB)

This prestigious triple accreditation is held by less than 100 schools globally!

GLOBALLY EMPLOYABLE GRADUATES

Your graduate employability is the University's priority, so you will receive help in gaining the skills you need to compete in the demanding international job market. You will benefit from:

- a range of employability initiatives, such as the preparatory 'China Career Ready Programme'
- careers workshops and guidance from the Career Zone during your studies and after graduation
- the Exeter Award – helping you to develop professional skills and receive vital workplace experience

OUTSTANDING CAREERS SERVICES

The University of Exeter is one of the top 15 higher education institutions targeted by the largest number of top employers⁴. Its award-winning careers programmes are recognised as outstanding student services, such as:

- work placements or a year abroad
- social enterprise support
- student entrepreneurship

WELCOMING COMMUNITY

With more than 22,500 students from 130 different countries, the University of Exeter is a truly international university. The University's campuses offer a safe, convenient and diverse community where you will find a warm welcome and a lot going on.

The Streatham Campus is considered one of the most beautiful in the UK, with gardens, lakes and parkland throughout. The historic city of Exeter is just a 15-minute walk from campus, so you can easily enjoy the restaurants, shops and cultural activities on offer.

SUPPORTIVE LEARNING ENVIRONMENT

You'll receive lots of support throughout your degree. The International Student Support Office is the place to go for help and advice relating to your welfare. Staff will help you with any immigration and visa issues and organise cultural events with student societies for you to enjoy. Plus, the free Insessional programme means that you can still enjoy personalised English language support from INTO after you progress.

¹ The Times and The Sunday Times Good University Guide 2019

² Teaching Excellence Framework 2017

³ Research Excellence Framework 2014

⁴ High Fliers Research 2018/19



STREATHAM CAMPUS

- | | |
|-------------------------|---------------------|
| 1 INTO accommodation | 6 Students' Guild |
| 2 Student Health Centre | 7 Engineering |
| 3 Sports Park | 8 INTO Centre |
| 4 Psychology | 9 Forum and Library |
| 5 Biosciences | 10 Business School |

TOP 10

Top 10 in England for international student experience

(Whatuni Student Choice Awards 2019)

YOUR GUIDE TO CAMPUS LIFE >>

You will initially be based on the Streatham Campus. Surrounded by beautiful parkland and home to cutting-edge facilities, this inspirational campus is the ideal environment to live and study in. You'll experience the best of student life here.

INTO STUDY CENTRE

The INTO Centre is the place to go to attend classes and study during your pathway programme, located opposite the Forum – a £48 million study and social space that houses lecture theatres, the library and other convenient facilities.

INTO University of Exeter provides university-style teaching in its INTO Centre to help prepare you for life at the University of Exeter. You'll benefit from:

- a **Learning Resource Centre** with academic materials and study spaces
- a **large lecture theatre** for you to experience university-style lectures
- **two multimedia rooms** with specialist software installed on the computers
- a **science laboratory** with high quality equipment for hands-on learning
- an **INTO Café** to grab hot food, lunches, coffee, cold drinks and snacks

UNIVERSITY FACILITIES

The Streatham Campus is a registered botanical garden filled with specialist plant collections, so you'll find plenty of pretty, quiet and peaceful spaces to study.

INTO students also have access to many of the University's facilities, such as:

- **The Forum** – home to useful facilities including a 24/7 library, a Student Services Centre and food outlets
- **Sports Park** – outstanding sports facilities, including a swimming pool, golf centre, football pitches and courts
- **Northcott Theatre** – an on-campus venue where you can watch music, dancing and theatre productions
- **Bill Douglas Cinema Museum** – one of the biggest TV and film material collections in the UK
- **Multi-faith Chaplaincy** – a safe space for personal and group worship

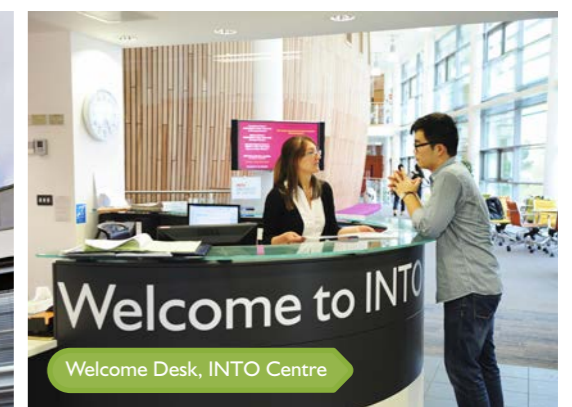
STUDENT SOCIAL LIFE

A work-life balance is the key to academic success. This is recognised by the University of Exeter, who was voted one of the top 10 universities in England for international student experience!¹

In your first week, you'll take part in an orientation programme to help you settle in. We'll help you adjust to life in Exeter by showing you around campus and introducing you to your classmates. Then, during your time here, you can:

- join one of 250+ clubs and societies covering a range of interests – from cultural societies and the International Society, to sports, music and arts clubs
- visit the Lemon Grove to attend fun events, club nights and live music gigs
- go to the Ram Bar to take part in quiz nights, karaoke and watch live sports
- participate in day trips across the UK

¹ Whatuni Student Choice Awards 2019



WE'RE HERE TO SUPPORT YOU

From the moment you arrive, the INTO Student Services team will help you with any issues. Then, when you progress to the University of Exeter, you'll receive support from the International Student Support Office. Services include:

- help opening a bank account and registering with a doctor
- extra support for students under the age of 18
- 24-hour telephone helpline for out-of-hours questions
- dedicated immigration advice and visa support



My INTO course always had clear content, a steady learning pace and teachers who welcomed questions. There is a lot of support and information about planning your future after a degree.

Jessie, China
2015 Completed an International Foundation at INTO Exeter
2018 Graduated with BSc (Hons) Psychology from the University of Exeter
Now Studying MSc Health Psychology at University College London



EXETER >

A STUDENT CITY RICH WITH CULTURE

Exeter is a peaceful, scenic city surrounded by stunning countryside and coastal views. In addition to its rich history, there's a large student population, a vibrant atmosphere and lots of fun things to do – so living in Exeter will always be interesting.

STAY ENTERTAINED

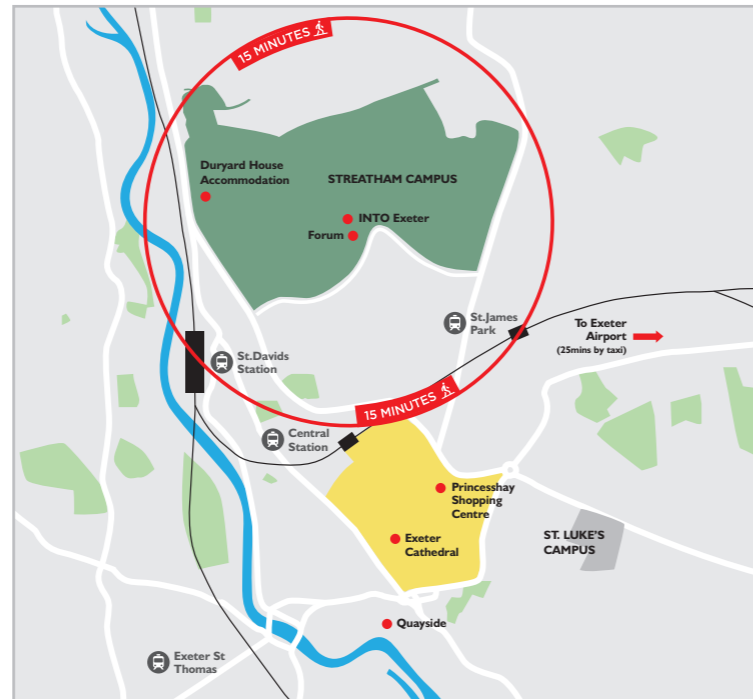
In the heart of the South West, this friendly and inviting city has both ancient landmarks and modern amenities. You'll discover:

- restaurants offering international foods, from Thai and Chinese to Indian and Italian
- unique multi-cultural festivals that celebrate international food, music and more
- theatre, cinema and concerts every night
- easy travel to beaches from all of the University's campuses

EMBRACE THE CULTURE

Exeter is a compact city with lots to do. The Quayside is a popular destination to relax in the sun, eat good food or go on a boat trip.

Explore the Gothic Cathedral, Roman ruins and cobbled streets – said to be the inspiration for Harry Potter's Diagon Alley. J. K. Rowling is an Exeter alumna and will have walked down those very streets herself!



INTO Accommodation, Streattham Campus



Student Shop, INTO Accommodation

YOUR HOME IN EXETER >

With a choice of living options, including student residences on the University campus and homestay accommodation with carefully selected hosts, it's easy for you to find the perfect place to call home.

INTO STUDENT RESIDENCES

Choose from three different room types, each offering a comfortable living space:

- Single En Suite
- Twin Studio
- Single Studio

Just a 15-minute walk from the INTO Centre, you will join a friendly and welcoming student community, living in a safe, modern and furnished room with easy access to all the facilities you need.

HOMESTAY

This is a unique opportunity to experience British life and culture first-hand. You will have a private room in a local host's home, sharing mealtimes and living spaces.

SUPPORTING YOU

In the residences, you'll find on-site staff available 24/7 to offer support. If you are under the age of 18, we offer extra support to ensure that your experience with us is a happy and positive one.

TOP 10

Top 10 safest student cities in England

(Times Higher Education Student Experience Survey 2018)



95% student satisfaction for feeling safe and secure

(INTO Annual Student Experience Survey 2019)



Princesshay Shopping Centre, Exeter



Gandy Street, Exeter

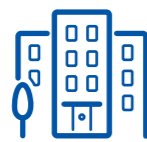


Falmouth, Cornwall

WHAT OUR STUDENTS SAY THEY LOVE ABOUT EXETER:



Beautiful campuses



Compact city with everything you need



Lots of societies – there's something for everyone



Easy to travel around



Feeling safe

Single En Suite

- En suite bathroom
- Shared kitchen

Twin Studio

- Shared bathroom
- Shared kitchen

Single Studio

- En suite bathroom
- Private kitchen

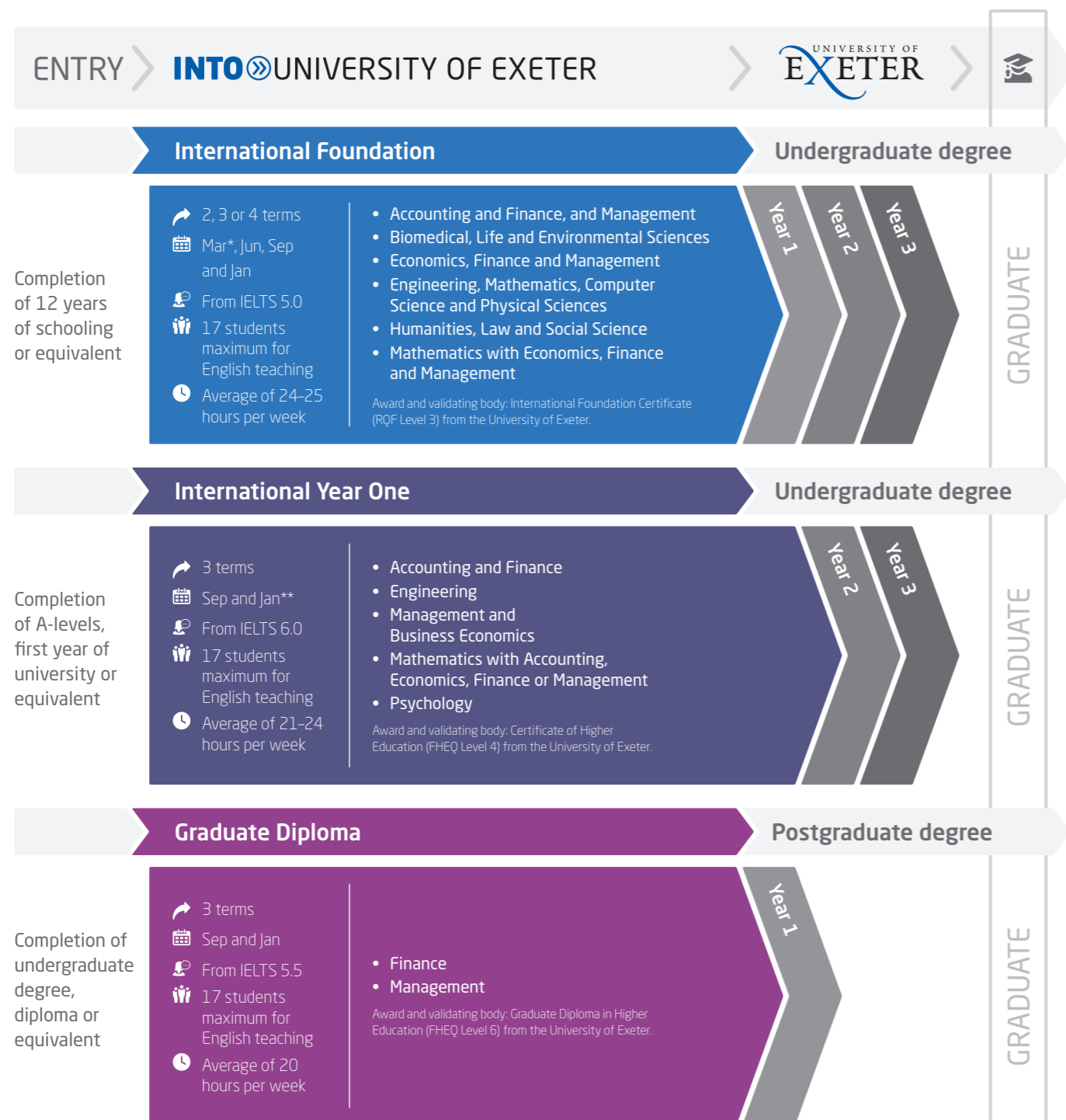
All INTO student residences:

- On campus
- 15 MIN Walk to INTO Centre
- Laundry facilities
- Wi-Fi
- On-site staff
- On-site shop
- 24-hour security
- Study space

INTO University of Exeter aims to provide the accommodation requested. However, there may be occasions when INTO University of Exeter is unable to provide the requested accommodation and reserves the right to offer an alternative type of accommodation instead. The price for any alternative accommodation may differ and will be confirmed to students at the time of their offer.

Choosing your course

Prepare for your university degree with our tailored, academic pathway programmes designed in partnership with the University of Exeter. You'll benefit from university-style teaching for subject-based modules and high academic standards. Then, when it comes to progressing to your chosen degree, we'll support you with your university application.



* Mar intake is the only option for the 2-term pathway in Accounting and Finance, and Management.

** Jan intake is only available for the Accounting and Finance and Management and Business Economics pathways.

Please note that course length and start month options may vary depending on the pathway chosen. Please visit www.intostudy.com/exeter/courses for full information.

International Foundation

Accounting and Finance, and Management (2 term) - AFM

- > Study the application of management in a shorter 6-month programme before progressing to the University's triple accredited Business School.
- > The University of Exeter is one of the top 150 universities in the world for Accounting and Finance (QS World University Rankings 2019).

What will I study?

You will need to earn 120 credits from the following modules:

| | |
|--------------------------------------------|-----------------------------------------------------|
| English for Business (20 credits) | Introduction to Accounting and Finance (20 credits) |
| Foundation Mathematics (20 credits) | Introduction to Economics (20 credits) |
| Independent Study in Business (20 credits) | Introduction to Management (20 credits) |

Progress to one of **7** degrees. Find out more online at www.intostudy.com/exeter/AFM

Biomedical, Life and Environmental Sciences - sci

- > The University of Exeter is joint 10th in the UK for Biological Sciences (The Times and The Sunday Times Good University Guide 2019).
- > Benefit from the INTO Centre's state-of-the-art science laboratory to carry out practical experiments and complete assessments during your pathway programme.

What will I study?

You will need to earn 120 credits from the following modules:

| | |
|-----------------------------------------------------------|-------------------------------------------------|
| Academic English for Engineering and Science (30 credits) | Foundation Mathematics (20 credits) |
| Engineering and Science Project (10 credits) | Introduction to Biological Science (20 credits) |

Specialist modules (2 out of 4, depending on progression degree):

| | |
|------------------------------------------------|-----------------------------------------|
| Introduction to Chemical Sciences (20 credits) | Introduction to Psychology (20 credits) |
| Introduction to Human Biology (20 credits) | Mathematics 1 (20 credits) |

Progress to **42** degrees. Find out more online at www.intostudy.com/exeter/SCI

Economics, Finance and Management - ECON

- > The University of Exeter is one of the top 125 universities in the world for Business and Economics (Times Higher Education World University Rankings 2019).
- > Opportunity to progress to an undergraduate degree in a business, finance or economics subject area at the University's triple accredited Business School.

What will I study?

You will need to earn 120 credits from the following modules:

| | |
|--------------------------------------------|-----------------------------------------------------|
| Academic English for Business (30 credits) | Introduction to Accounting and Finance (20 credits) |
| Business Project (10 credits) | Introduction to Economics (20 credits) |

Specialist modules (2 out of 4, depending on progression degree):

| | |
|-----------------------------------------|---------------------------------------|
| Foundation Mathematics (20 credits) | Mathematics 1 (20 credits) |
| Introduction to Management (20 credits) | Mathematics for Business (20 credits) |

Progress to **13** degrees. Find out more online at www.intostudy.com/exeter/ECON

Progress to Year 1 of an undergraduate degree at the University of Exeter

Start date

2 term: Mar

English language entry requirements*

2 term: IELTS 6.5 (with a minimum of 6.0 in all subskills) or equivalent.

Age requirement

16 years and above**

Start date

3 term: Sep or Jan

4 term: Jun or Sep

English language entry requirements*

3 term: IELTS 5.5 (with a minimum of 5.0 in writing and 4.5 in all other subskills) or equivalent.

4 term: IELTS 5.0 (with a minimum of 4.5 in all subskills) or equivalent.

Age requirement

16 years and above**

Start date

3 term: Sep or Jan

4 term: Jun or Sep

English language entry requirements*

3 term: IELTS 5.5 (with a minimum of 5.0 in writing and 4.5 in all other subskills) or equivalent.

4 term: IELTS 5.0 (with a minimum of 4.5 in all subskills) or equivalent.

Age requirement

16 years and above**

* If you do not meet the minimum English language requirements, you should apply for our Academic English course. See page 18 for more information.

** All students must be 17 by the end of their academic year of study.

Progress to Year 1 of an undergraduate degree at the University of Exeter

Start date

3 term: Sep or Jan
4 term: Jun or Sep

English language entry requirements*

3 term: IELTS 5.5 (with a minimum of 5.0 in writing and 4.5 in all other subskills) or equivalent.

4 term: IELTS 5.0 (with a minimum of 4.5 in all subskills) or equivalent.

Age requirement

16 years and above**

Start date

3 term: Sep or Jan
4 term: Jun or Sep

English language entry requirements*

3 term: IELTS 5.5 (with a minimum of 5.0 in writing and 4.5 in all other subskills) or equivalent.

4 term: IELTS 5.0 (with a minimum of 4.5 in all subskills) or equivalent.

Age requirement

16 years and above**

Start date

3 term: Sep or Jan
4 term: Jun or Sep

English language entry requirements*

3 term: IELTS 5.5 (with a minimum of 5.0 in writing and 4.5 in all other subskills) or equivalent.

4 term: IELTS 5.0 (with a minimum of 4.5 in all subskills) or equivalent.

Age requirement

16 years and above**

* If you do not meet the minimum English language requirements, you should apply for our Academic English course. See page 18 for more information.

** All students must be 17 by the end of their academic year of study.

International Foundation

Engineering, Mathematics, Computer Science and Physical Sciences - ENG

- > The University of Exeter is one of the top 125 universities in the world for Physical Sciences (Times Higher Education World University Rankings 2019).
- > Benefit from industry experience available on all Engineering degrees at the University of Exeter, through summer placements or a year in industry.

What will I study?

You will need to earn 120 credits from the following modules:

| | |
|-----------------------------------------------------------|-----------------------------------------------|
| Academic English for Engineering and Science (30 credits) | Introduction to Physical Science (20 credits) |
| Engineering and Science Project (10 credits) | Mathematics 1 (20 credits) |
| Foundation Mathematics (20 credits) | Mathematics 2 (20 credits) |

Progress to **51** degrees. Find out more online at www.intostudy.com/exeter/ENG

Humanities, Law and Social Science - HUM

- > The University of Exeter is one of the top 100 universities in the world for Arts and Humanities (Times Higher Education World University Rankings 2019).
- > Progress to a wide range of degrees at the College of Humanities or the College of Social Science and International Studies, including the Law School.

What will I study?

You will need to earn 120 credits from the following modules:

| | |
|------------------------------------------------------------------|------------------------------------------------|
| Academic English for Humanities and Social Sciences (30 credits) | Liberal Arts and Research Project (30 credits) |
| | Social Justice (20 credits) |

Specialist modules (2 out of 3, depending on progression degree):

Introduction to English Law (20 credits)
Introduction to Film and Literary Studies (20 credits)
Introduction to World Politics and International Relations (20 credits)

Progress to **58** degrees. Find out more online at www.intostudy.com/exeter/HUM

Mathematics with Economics, Finance and Management - FMATH

- > The University of Exeter is one of the top 20 universities in the UK for Mathematics (The Times and The Sunday Times Good University Guide 2019).
- > Progress to a degree at the College of Engineering, Mathematics and Physical Sciences, taught in partnership with the triple accredited Business School.

What will I study?

You will need to earn 120 credits from the following modules:

| | |
|--------------------------------------------|-----------------------------------------------------|
| Academic English for Business (30 credits) | Introduction to Accounting and Finance (20 credits) |
| Business Project (10 credits) | Introduction to Economics (20 credits) |

Specialist modules (2 out of 4, depending on progression degree):

Foundation Mathematics (20 credits) Mathematics 1 (20 credits)
Introduction to Management (20 credits) Mathematics for Business (20 credits)

Progress to **4** degrees. Find out more online at www.intostudy.com/exeter/FMATH

International Foundation progression degree options

There are more than 150 progression degree options at the University of Exeter in September 2021. You can progress to these from one of our INTO University of Exeter International Foundation programmes. Below is a selection of some of the most popular. See pages 11-12 for more details.

| Degree | Pathway(s) | Specific requirements | English level | Academic grade |
|------------------------------------------------------------------------|------------------|---------------------------------------------------------------------------------------------------------------|---------------|----------------|
| Accounting and Finance BSc (Hons) [†] | AFM or ECON | | 65% | 67% |
| Applied Psychology (Clinical) MSci (Hons) | SCI | Compulsory module: Introduction to Psychology. Interview required. | 65% | 67% |
| Archaeology BA (Hons) [†] | HUM | | 65% | 63% |
| Biological and Medicinal Chemistry BSc (Hons) [†] | SCI | | 65% | 63% |
| Biological Sciences BSc (Hons) [†] | SCI | | 65% | 63% |
| Business BSc (Hons) [†] | AFM or ECON | | 65% | 63% |
| Business and Laws BBL (Hons) [†] | AFM, ECON or HUM | | 65% | 63% |
| Business and Management BA (Hons) [†] | AFM or ECON | | 65% | 67% |
| Business Economics BSc (Hons) [†] | ECON | | 65% | 67% |
| Civil and Environmental Engineering MEng (Hons) [†] | ENG | 60% in Mathematics 2 module. | 65% | 63% |
| Civil Engineering BEng (Hons) * [†] | ENG | 60% in Mathematics 2 module. | 65% | 63% |
| Computer Science BSc (Hons) * [†] | ENG | | 65% | 63% |
| Data Science BSc (Hons) * | ENG | Average of 60% across Mathematics 1 and Mathematics 2 modules. | 65% | 65% |
| Drama BA (Hons) [†] | HUM | Compulsory module: Film and Literary Studies. Interview and studio session required. | 65% | 63% |
| Economics BSc (Hons) [†] | ECON | Compulsory module: Mathematics 1. | 65% | 67% |
| Economics and Finance BSc (Hons) [†] | ECON | Compulsory module: Mathematics 1. | 65% | 67% |
| Electronic Engineering BEng (Hons) * [†] | ENG | 60% in Mathematics 2 module. | 65% | 63% |
| Electronic Engineering and Computer Science BEng (Hons) * [†] | ENG | 60% in Mathematics 2 module. | 65% | 63% |
| Engineering and Entrepreneurship BEng (Hons) | ENG | 60% in Mathematics 2 module. | 65% | 63% |
| Engineering and Management BEng (Hons) * [†] | ENG | 60% in Mathematics 2 module. | 65% | 63% |
| English BA (Hons) [†] | HUM | 67% in Film and Literary Studies module. | 65% | 67% |
| Environmental Science BSc (Hons) * [†] | SCI | | 65% | 63% |
| Exercise and Sport Sciences BSc (Hons) * [†] | SCI | Compulsory module: Mathematics 1. | 65% | 63% |
| Film and Television Studies BA (Hons) [†] | HUM | 63% in Film and Literary Studies module. | 65% | 63% |
| Geography BA/BSc (Hons) [†] | SCI or HUM | | 65% | 67% |
| Geology BSc (Hons) * [†] | SCI or ENG | | 65% | 63% |
| History BA (Hons) [†] | HUM | | 65% | 67% |
| International Relations BA (Hons) [†] | HUM | | 65% | 67% |
| Law LLB (Hons) | HUM | | 65% | 67% |
| Liberal Arts BA (Hons) [†] | HUM | | 65% | 67% |
| Marine Biology BSc (Hons) * [†] | SCI | Compulsory module: Mathematics 1. | 65% | 63% |
| Marketing and Management BA (Hons) [†] | ECON | | 65% | 67% |
| Mathematics BSc (Hons) * | ENG | Average of 60% across Mathematics 1 and Mathematics 2 modules. | 65% | 67% |
| Mathematics with Economics BSc (Hons) * | ENG or FMATH | Average of 60% across Foundation Mathematics and Mathematics 1. | 65% | 67% |
| Mathematics with Finance BSc (Hons) * | ENG or FMATH | Average of 60% across Foundation Mathematics and Mathematics 1. | 65% | 67% |
| Mechanical Engineering BEng (Hons) * [†] | ENG | 60% in Mathematics 2 module. | 65% | 63% |
| Medical Imaging (Diagnostic Radiography) BSc (Hons) | SCI | | 65% | 63% |
| Medical Sciences BSc (Hons) [†] | SCI | Compulsory module: Introduction to Human Biology. | 65% | 63% |
| Mining Engineering BEng (Hons) * [†] | ENG | 60% in Mathematics 2 module. | 65% | 63% |
| Natural Sciences BSc (Hons) * | SCI | Average of 60% across Foundation Mathematics and Mathematics 1. | 65% | 67% |
| Neuroscience BSc (Hons) * [†] | SCI | Compulsory module: Introduction to Human Biology. | 65% | 63% |
| Philosophy BA (Hons) [†] | HUM | | 65% | 67% |
| Physics with Astrophysics BSc (Hons) * [†] | ENG | Average of 60% across Mathematics 1, Mathematics 2 and Introduction to Physical Sciences. Interview required. | 65% | 67% |
| Politics BA (Hons) [†] | HUM | | 65% | 67% |
| Politics and International Relations BSc (Hons) [†] | HUM | | 65% | 67% |
| Politics, Philosophy and Economics BA (Hons) [†] | ECON or HUM | Compulsory module: Foundation Mathematics. | 65% | 67% |
| Psychology BSc (Hons) | SCI | Compulsory module: Introduction to Psychology. | 65% | 67% |
| Renewable Energy Engineering BEng (Hons) * [†] | ENG | 60% in Mathematics 2 module. | 65% | 63% |
| Sociology BSc (Hons) [†] | HUM | | 65% | 63% |
| Zoology BSc (Hons) * [†] | SCI | | 65% | 63% |

Find comprehensive information on all academic pathway programmes, degree options and progression requirements at: www.intostudy.com/exeter/courses

[†] Degree option with industrial experience also available
[‡] Degree option with study abroad also available
[‡] Degree programme is taught at the Penryn Campus only

Please note: English level and academic progression requirements are correct to the best of our knowledge at the time of going to print. In some circumstances, these may change throughout the year - please visit www.intostudy.com/exeter/courses for the most up-to-date information.

* Undergraduate Master's option also available

† Industrial experience option may have additional requirements

Progress to Year 2 of an undergraduate degree at the University of Exeter

Start date

3 term: Sep or Jan

English language entry requirements*

3 term: IELTS 6.0 (with a minimum of 5.5 in writing and no less than 5.0 in other subskills) or equivalent.

Age requirement

16 years and above**

Start date

3 term: Sep

English language entry requirements*

3 term: IELTS 6.0 (with a minimum of 5.0 in all subskills) or equivalent.

Age requirement

16 years and above**

Start date

3 term: Sep or Jan

English language entry requirements*

3 term: IELTS 6.0 (with a minimum of 5.5 in writing and no less than 5.0 in other subskills) or equivalent.

Age requirement

16 years and above**

* If you do not meet the minimum English language requirements, you should apply for our Academic English course. See page 18 for more information.

** All students must be 17 by the end of their academic year of study.

International Year One

Accounting and Finance - ACCT

- > The University of Exeter is one of the top 150 universities in the world for Accounting and Finance (QS World University Rankings 2019).
- > Opportunity to progress to an undergraduate degree in accounting with finance or business at the University's triple accredited Business School.

What will I study?

You will need to earn 120 credits from the following modules:

| | |
|----------------------------------------------------------------|-------------------------------------------------------|
| English Language Skills for Undergraduate Studies (30 credits) | Management Concepts and Practice (15 credits) |
| Introduction to Financial Accounting (15 credits) | Principles of Economics (Macroeconomics) (15 credits) |
| Introduction to Management Accounting (15 credits) | Principles of Economics (Microeconomics) (15 credits) |
| Introduction to Statistics (15 credits) | |

Progress to 2 degrees. Find out more online at www.intostudy.com/exeter/ACCT

Engineering - IYOE

- > The University of Exeter is 8th in the UK for Civil Engineering (The Times and The Sunday Times Good University Guide 2019).
- > Some pathway modules are taught by professors at the College of Engineering, Mathematics and Physical Sciences, such as Enterprise and Entrepreneurship.

What will I study?

You will need to earn 120 credits from the following modules:

| | |
|----------------------------------------------------------------|-------------------------------------------------------------------|
| Engineering Mathematics and Scientific Computing (30 credits) | Enterprise and Entrepreneurship (15 credits) |
| English Language and Study Skills for Engineering (30 credits) | Fundamentals of Mechanics, Materials and Electronics (30 credits) |
| | Multi-Disciplinary Challenge Project (15 credits) |

Progress to 14 degrees. Find out more online at www.intostudy.com/exeter/IYOE

Management and Business Economics - BUS

- > The University of Exeter's Business School is 1st in the UK for graduate outcomes (HESA Destinations of Leavers from Higher Education 2016/17).
- > Opportunity to progress to an undergraduate degree in a business, management or economics subject area at the University's triple accredited Business School.

What will I study?

You will need to earn 120 credits from the following modules:

| | |
|----------------------------------------------------------------|-------------------------------------------------------|
| Accounting for Management and Economics (15 credits) | Management Concepts and Practice (15 credits) |
| English Language Skills for Undergraduate Studies (30 credits) | Principles of Economics (Macroeconomics) (15 credits) |
| Fundamentals of Marketing (15 credits) | Principles of Economics (Microeconomics) (15 credits) |
| Introduction to Statistics (15 credits) | |

Progress to 3 degrees. Find out more online at www.intostudy.com/exeter/BUS

International Year One

Mathematics with Accounting, Economics, Finance or Management - YMATH

- > The University of Exeter is one of the top 20 universities in the UK for Mathematics (The Times and The Sunday Times Good University Guide 2019).
- > Choose from four sub-pathway options with tailored specialist modules, depending on your intended progression degree at the University.

What will I study?

You will need to earn 120 credits from the following modules:

Core modules:

English Language Skills for Undergraduate Studies (30 credits)
Mathematical Methods (30 credits)
Mathematical Structures (30 credits)

Specialist modules – Mathematics with Accounting sub-pathway:

Introduction to Financial Accounting (15 credits)
Introduction to Management Accounting (15 credits)

Specialist modules – Mathematics with Economics sub-pathway:

Microeconomics (30 credits)

Specialist modules – Mathematics with Finance sub-pathway:

Microeconomics (30 credits)

Specialist modules – Mathematics with Management sub-pathway:

Management Concepts and Practice (15 credits)
Fundamentals of Marketing (15 credits)

Progress to 4 degrees. Find out more online at www.intostudy.com/exeter/YMATH

Psychology - PSY

- > The University of Exeter is 7th in the UK for Psychology (The Times and The Sunday Times Good University Guide 2019).
- > Progress to BSc (Hons) Psychology at the University of Exeter – a degree programme that is accredited by the British Psychological Society (BPS).

What will I study?

You will need to earn 120 credits from the following modules:

Cognition, Emotion and Development (15 credits)
Introduction to Biological Psychology (15 credits)
Introduction to Clinical Psychology (15 credits)
Introduction to Research Methods (15 credits)
Introduction to Social Psychology (15 credits)
Introduction to Statistics (15 credits)
Psychological Concepts, Language and Study Skills (30 credits)

Progress to BSc (Hons) Psychology. Find out more online at www.intostudy.com/exeter/PSY

Progress to Year 2 of an undergraduate degree at the University of Exeter

Start date

3 term: Sep

English language entry requirements*

3 term: IELTS 6.0 (with a minimum of 5.5 in writing and no less than 5.0 in other subskills) or equivalent.

Age requirement

16 years and above**

Start date

3 term: Sep

English language entry requirements*

3 term: IELTS 6.0 (with a minimum of 5.5 in writing and no less than 5.0 in other subskills) or equivalent.

Age requirement

16 years and above**

* If you do not meet the minimum English language requirements, you should apply for our Academic English course. See page 18 for more information.

** All students must be 17 by the end of their academic year of study.

International Year One progression degree options

There are 24 progression degree options at the University of Exeter in September 2021 – you can find the full list below. You can progress to these from one of our INTO University of Exeter International Year One programmes. See pages 14–15 for more details.

| Degree | Pathway(s) | Specific requirements | English level | Academic grade |
|--------------------------------------------------------------|------------|----------------------------------------------------------------------------------------------------------------------------|---------------|----------------|
| Accounting and Business BSc (Hons) ¹ | ACCT | Average of 55% across Introduction to Financial Accounting module and Introduction to Management Accounting module. | 65% | 55% |
| Accounting and Finance BSc (Hons) ¹ | ACCT | Average of 55% across Introduction to Financial Accounting module and Introduction to Management Accounting module. | 65% | 55% |
| Business and Management BSc (Hons) ¹ | BUS | Average of 55% across Management Concepts and Practice module and Fundamentals of Marketing module. | 65% | 55% |
| Business Economics BSc (Hons) ¹ | BUS | Average of 55% across Principles of Economics (Macroeconomics) module and Principles of Economics (Microeconomics) module. | 65% | 55% |
| Civil and Environmental Engineering MEng (Hons) ¹ | IYOE | | 65% | 50% |
| Civil Engineering BEng (Hons) ¹ | IYOE | | 65% | 50% |
| Civil Engineering MEng (Hons) ¹ | IYOE | | 65% | 50% |
| Electronic Engineering BEng (Hons) ¹ | IYOE | 50% in Electronics for Engineers module. | 65% | 50% |
| Electronic Engineering MEng (Hons) ¹ | IYOE | 50% in Electronics for Engineers module. | 65% | 50% |
| Engineering BEng (Hons) | IYOE | 60% in Mathematics 2 module. | 65% | 50% |
| Engineering MEng (Hons) | IYOE | | 65% | 50% |
| Engineering and Entrepreneurship BEng (Hons) | IYOE | | 65% | 50% |
| Engineering and Management BEng (Hons) ¹ | IYOE | | 65% | 50% |
| Engineering and Management MEng (Hons) ¹ | IYOE | | 65% | 50% |
| Marketing and Management BSc (Hons) ¹ | BUS | Average of 55% across Management Concepts and Practice module and Fundamentals of Marketing module. | 65% | 55% |
| Materials Engineering BEng (Hons) ¹ | IYOE | | 65% | 50% |
| Materials Engineering MEng (Hons) ¹ | IYOE | | 65% | 50% |
| Mathematics with Accounting BSc (Hons) | YMATH | | 65% | 50% |
| Mathematics with Economics BSc (Hons) | YMATH | | 65% | 50% |
| Mathematics with Finance BSc (Hons) | YMATH | | 65% | 50% |
| Mathematics with Management BSc (Hons) | YMATH | | 65% | 50% |
| Mechanical Engineering BEng (Hons) ¹ | IYOE | | 65% | 50% |
| Mechanical Engineering MEng (Hons) ¹ | IYOE | | 65% | 50% |
| Psychology BSc (Hons) | PSY | 40% in Introduction to Statistics module, to include 40% in the January exam component of the module. | 65% | 50% |

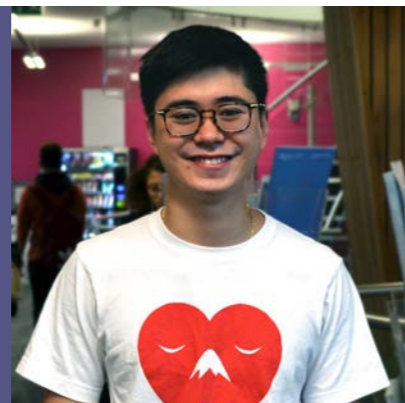
¹ Degree option with industrial experience also available

Please note: English level and academic progression requirements are correct to the best of our knowledge at the time of going to print. In some circumstances, these may change throughout the year – please visit www.intostudy.com/exeter/courses for the most up-to-date information.

* Industrial experience option may have additional requirements

“The International Year One was perfect for me because it allowed me to progress straight to the second year of my degree without losing a year of university learning. I recommend INTO University of Exeter because of the constant support you receive from staff and teachers.”

Lorenzo, Philippines
2016 Started an International Year One at INTO Exeter
2017 Progressed to BA (Hons) Management and Sustainability at the University of Exeter



“My industrial placement not only makes my CV stand out from the crowd, but it also provided me with opportunities to develop my personal growth, find out my career interests, expand my career network and gain insights into different industries.”

Hugo, Hong Kong
2015 Started an International Foundation at INTO Exeter
2016 Progressed to BSc (Hons) Management with Marketing with Industrial Experience at the University of Exeter



Graduate Diploma

Finance - FIN

- > The University of Exeter is 98th in the world for Masters in Finance (QS World University Rankings 2019).
- > Progress to a postgraduate degree at the Xfi Centre for Finance and Investment to access the financial databases and software you'll need for a career in finance.

What will I study?

You will need to earn 120 credits from the following modules:

| | |
|--------------------------------------------------------|----------------------------------------|
| English Language and Communication Skills (30 credits) | Human Resource Management (15 credits) |
| Financial Management (15 credits) | Marketing Management (15 credits) |
| Fundamentals of Investments (30 credits) | Operations Management (15 credits) |

Progress to 6 degrees. Find out more online at www.intostudy.com/exeter/FIN

Management - MAN

- > The University of Exeter is one of the top 135 universities in the world for Masters in Management (QS World University Rankings 2019).
- > Progress to a degree accredited by the Chartered Management Institute, the Chartered Institute of Personnel and Development, or other professional bodies.

What will I study?

You will need to earn 120 credits from the following modules:

| | |
|--------------------------------------------------------|----------------------------------------|
| English Language and Communication Skills (30 credits) | Human Resource Management (15 credits) |
| Financial Management (15 credits) | Marketing Management (15 credits) |
| | Operations Management (15 credits) |

Specialist modules (1 out of 2, depending on progression degree):

- Business-based Dissertation (30 credits)
- Public Administration-based Dissertation (30 credits)

Progress to 9 degrees. Find out more online at www.intostudy.com/exeter/MAN

Graduate Diploma progression degree options

There are 15 progression degree options at the University of Exeter in September 2021 – you can find the full list below.

You can progress to these from one of our INTO University of Exeter Graduate Diploma programmes.

| Degree | Pathway(s) | Specific requirements | English level | Academic grade |
|--------------------------------------------|------------|------------------------------------------------------------------------------------------------------------------------------------------------------------|---------------|----------------|
| Engineering Business Management MSc | MAN | | 65% | 65% |
| Entrepreneurship and Innovation MSc | MAN | A personal statement explaining your reasons for choosing this postgraduate programme is required. | 70% | 65% |
| Finance and Investment MSc** | FIN | Average of 65% in the two Finance modules. | 65% | 65% |
| Finance and Management MSc** | FIN | Average of 65% in the two Finance modules. | 65% | 65% |
| Finance and Marketing MSc** | FIN | Average of 65% in the two Finance modules. | 65% | 65% |
| Financial Analysis and Fund Management MSc | FIN | Average of 70% in the two Finance modules. | 70% | 70% |
| Financial Mathematics MSc** | FIN | | 65% | 65% |
| Human Resource Management MSc** | MAN | | 70% | 65% |
| International Business MSc | MAN | | 65% | 65% |
| International Management MSc** | MAN | | 70% | 65% |
| International Supply Chain Management MSc | MAN | | 65% | 65% |
| International Tourism Management MSc | MAN | | 65% | 65% |
| Marketing MSc | MAN | | 70% | 65% |
| Masters Public Administration MPA | MAN | A specialist dissertation in Public Administration is required. | 65% | 65% |
| The Exeter MBA | MAN | 60% in a Business-based dissertation. 3 years' relevant graduate work experience, assessed by CV submission prior to receiving offer for Graduate Diploma. | 70% | 70% |

Please note: English level and academic progression requirements are correct to the best of our knowledge at the time of going to print. In some circumstances, these may change throughout the year – please visit www.intostudy.com/exeter/courses for the most up-to-date information.

** This programme can be taken as a 9 or 12 month option

Progress to a postgraduate degree at the University of Exeter

Start date

3 term: Sep or Jan
4 term: Sep or Jun

English language entry requirements*

3 term: IELTS 5.5 (with a minimum of 5.5 in all subskills) or equivalent.

4 term (with Pre-session English for Graduate Diploma): IELTS 5.0 (with at least one subskill at 5.5 and no subskill below 5.0) or equivalent.

Age requirement

16 years and above**

Start date

3 term: Sep or Jan
4 term: Sep or Jun

English language entry requirements*

3 term: IELTS 5.5 (with a minimum of 5.5 in all subskills) or equivalent.

4 term (with Pre-session English for Graduate Diploma): IELTS 5.0 (with at least one subskill at 5.5 and no subskill below 5.0) or equivalent.

Age requirement

16 years and above**

* If you do not meet the minimum English language requirements, you should apply for our Academic English course. See page 18 for more information.

** All students must be 17 by the end of their academic year of study.

English courses

Improve your English language skills to prepare for further academic study

Start date

16 weeks: Aug,
1-4 terms: Sep, Jan, Mar or Jun

English language entry requirements

From IELTS 3.0

Age requirement

16 years and above

Class size and hours

Maximum of 16 students
30 learning hours per week, with
25 hours of face-to-face contact

Improve your English language skills for work, socialising and travel in the UK

Start date

Sep, Nov, Jan, Feb, Mar, Apr, May, Jun, Jul or Aug

English language entry requirements

All English levels, from elementary to upper intermediate

Age requirement

16 years and above

Class size and hours

Maximum of 16 students
20 hours per week on average

Improve your English language skills to the level required by your chosen degree

Start date

10 weeks: Jun
6 weeks: Jul

English language entry requirements

10 weeks: IELTS 5.5 (minimum of 5.0 in each subskill) or equivalent.

6 weeks: IELTS 6.0 (with a minimum of 5.5 in each subskill) or equivalent.

See page 17 for information about Pre-session English for Graduate Diploma.

Age requirement

16 years and above

Class size and hours

Maximum of 18 students
20-21 hours per week on average

EN Academic English



- For students who need to increase their IELTS level in order to progress to university. This intensive course offers rapid progress of up to one IELTS band per term.

Course features

- You will learn through face-to-face teaching and online learning to communicate effectively in English and improve your reading, writing, speaking and listening skills.
- A diverse social programme and effective academic content will help you to develop the fluency and confidence you need to progress to further study.
- Access INTO's interactive online learning platform, MyINTO, outside of class to practise your English language skills, complete tasks and engage with your classmates.
- Developed in partnership with Cambridge English, the world leader in language assessment, INTO English Language Assessment (IELA) provides a standardised online assessment of all four core language skills throughout your studies. The IELA test is available to you as an additional form of assessment and allows you to choose from a wide range of Higher Education institutions.

EN General English

- For students who want to increase their confidence in using everyday English for general life, work, socialising and travel in the UK.

Course features

- Build your confidence in core English language skills in everyday situations, from speaking, reading, listening and writing to vocabulary and grammar.
- Year-round courses have flexible start dates and course lengths, from 2-48 weeks.
- Study on a beautiful campus that has lakes, woodland and gardens to enjoy.
- Take part in a range of activities and socialise with students from all over the world to build on your English language ability and make new friends.

EN Pre-session English

- For students who are academically qualified and hold an offer from the University of Exeter, but need to improve their English language skills to the level required for their chosen degree.

Course features

- Prepare for your degree by learning English language and study skills tailored to the requirements of university study in a 6 or 10 week course.
- Learn from experienced teachers and alongside students who will be studying the same - or similar - subjects as you at the University.
- Study academic vocabulary related to your degree and learn how to give presentations on areas of academic interest to practise this terminology.
- Get used to living and studying in the UK and adjust to the style, challenges and expectations of the UK higher education system.

Successful INTO alumni

Many INTO University of Exeter students have graduated with an internationally-recognised degree from the University of Exeter and have gone on to start their dream career. Here are some success stories from our INTO University of Exeter alumni.



"INTO became my second home. It equipped me with the knowledge I needed to progress to University and helped me to smoothly settle into the UK. Its friendly and supportive atmosphere encouraged me to work hard, be socially active and to make friends. I definitely recommend INTO University of Exeter to anyone eager to start their studies in the UK."

Nikita, Russia

2015 Completed an International Year One at INTO Exeter

2018 Graduated with BSc (Hons) Business Economics from the University of Exeter

Now Studying MSc Investment and Wealth Management at Imperial College London Business School in the UK

"Exeter is very green, peaceful and calm, and the people there are friendly and helpful. Studying at a university in the UK has given me key skills such as networking, which helped me to get a job after graduating."

Eric, Indonesia

2013 Completed an International Year One at INTO Exeter

2015 Graduated with BA (Hons) Business Economics from the University of Exeter and was accepted to study at CASS Business School

Now Works in Wealth Management at HSBC in Jakarta, Indonesia



"The English course was of great help as it provided us with a really good knowledge of academic business terms, while the Business modules prepared us so that we were a little bit ahead of the other second year students at the University. INTO gave me the experience of learning how to be independent and deal with the challenges I'll face in life."

Victoria, Vietnam

2013 Completed an International Year One at INTO Exeter

2015 Graduated with BA (Hons) Business and Management from the University of Exeter and was accepted to study at the University of Sydney

Now Working as a Lecturer at Ton Duc Thang University in Ho Chi Minh City, Vietnam



"My year at Microsoft helped me to become more professional while giving me an insight into how a global company works. I had the chance to be involved in various projects across the company and make lasting connections. During my degree, I also completed the Exeter Award and was President of the Russian Society."

Stefaniia, Russia

2013 Completed an International Foundation at INTO Exeter

2017 Graduated with a First Class degree in Accounting and Finance with Industrial Experience from the University of Exeter

Now Working as a Specialist in Data Analytics at PwC in London, UK

"INTO gave me the valuable experience of preparing myself to adapt to a different study environment. I really enjoyed the small study groups as I had more opportunities to interact with tutors and solve problems. The staff were so friendly and patient - I'd like to express a massive thanks to all staff at INTO."

Yolanda, China

2013 Completed an International Foundation at INTO Exeter

2016 Graduated with a degree in BSc (Hons) Economics and Finance from the University of Exeter and was accepted to study MPhil in Real Estate Finance at the University of Cambridge

Now Working as a Product Manager at China Everbright Bank in Shanghai, China



Dates and prices




The cost of your programme may vary depending on factors including the pathway chosen and programme length. The following guide to costs is based on pricing for the current academic year and provides an indication of the cost of attendance for some of our pathways. For specific cost information, please refer online: www.intostudy.com/exeter/courses

| Estimated cost of attendance based on prices for current academic year 2019-2020 | | | | | | |
|----------------------------------------------------------------------------------|---------|----------------|----------------|-----------------|-----------|------------------------|
| Study length | Tuition | Accommodation | Books and fees | Airport pick up | Insurance | Total |
| Academic programmes | | | | | | |
| International Foundation (2 term) | £17,815 | £4,140-£4,830 | £370 | £40-£335 | £196 | £22,561-£23,546 |
| International Foundation (3 term) | £19,895 | £6,120-£7,980 | £370-£770 | £40-£335 | £357 | £26,782-£29,337 |
| International Foundation (4 term) | £24,790 | £8,640-£10,440 | £455-£855 | £40-£335 | £466 | £34,391-£36,886 |
| International Year One (3 term) | £19,895 | £6,120-£7,980 | £370-£770 | £40-£335 | £357 | £26,782-£29,337 |
| Graduate Diploma (3 term) | £19,895 | £6,120-£7,980 | £370 | £40-£335 | £357 | £26,782-£28,937 |
| English language courses | | | | | | |
| 1 term* | £4,895 | £1,980-£2,310 | £235 | £40-£335 | £122 | £7,272-£7,897 |
| 16 weeks | £7,830 | £3,215-£3,755 | £270 | £40-£335 | £145 | £11,500-£12,335 |

| Start months and term dates | | | | | |
|-----------------------------|---------------------------------|---------------------------|---------------------------------|------------------------|---------------------------------|
| Academic programmes | | Academic English | | Pre-sessional English | |
| June (4 term) | Mon 22 Jun 2020-Fri 04 Jun 2021 | August (16 weeks) | Mon 10 Aug 2020-Fri 11 Dec 2020 | June (10 weeks) | Mon 22 Jun 2020-Fri 28 Aug 2020 |
| September (3 term) | Mon 14 Sep 2020-Fri 04 Jun 2021 | September (1 term) | Mon 28 Sep 2020-Fri 11 Dec 2020 | July (6 weeks) | Mon 20 Jul 2020-Fri 28 Aug 2020 |
| September (4 term) | Mon 28 Sep 2020-Fri 27 Aug 2021 | January (1 term) | Mon 04 Jan 2021-Fri 19 Mar 2021 | | |
| January (3 term) | Mon 04 Jan 2021-Fri 27 Aug 2021 | March (1 term) | Mon 29 Mar 2021-Fri 11 Jun 2021 | | |
| March (2 term) | Mon 22 Mar 2021-Fri 27 Aug 2021 | June (1 term) | Mon 21 Jun 2021-Fri 03 Sep 2021 | | |

Prices shown are for the current academic year of 01 September 2019 - 31 August 2020 and for indicative purposes only. We will confirm all tuition dates and prices for the academic year 2020/2021 on or before 20 January 2020, with the tuition prices being subject to a maximum increase of up to 5% on the prices for the current academic year. For full details of term dates, please visit the relevant course page at www.intostudy.com/exeter/courses

* The price will depend on your start date and length of study. Prices shown are only for one term. Vacation weeks in between terms are extra and will be charged at the weekly accommodation price.

| | | |
|------------------------------------------------------------------------------------------------------------------------------------------------------------------------------------------------------------------------------------------------------|--------------------------------------------------------------------------------------------------------------------------------------------------------------------------------------------------------------------------|-------------------------------------------------------------------------------------------------------------------------------------------------------------------------------------------------------------------------------------------------------------------------------------------------------|
|  <p>Apply via your local INTO educational counsellor</p> <p>If you would like us to put you in contact with one of our counsellors, please contact us.</p> |  <p>Apply online</p> <p>Complete our online application form: apply.intostudy.com</p> |  <p>Need some help with your tuition fees?</p> <p>Check to see if you're eligible for a scholarship: www.intostudy.com/exeter/scholarships</p> |
|------------------------------------------------------------------------------------------------------------------------------------------------------------------------------------------------------------------------------------------------------|--------------------------------------------------------------------------------------------------------------------------------------------------------------------------------------------------------------------------|-------------------------------------------------------------------------------------------------------------------------------------------------------------------------------------------------------------------------------------------------------------------------------------------------------|

Discover more online

For students:
www.intostudy.com/exeter
For education counsellors:
partnerportal.intoglobal.com/exeter

Connect with us



Contact us

Enquiries and applications:
ukes@intoglobal.com
or +44 1273 876040
Visit the Centre:
into@exeter.ac.uk
or +44 1392 724282

Centre address details:
INTO University of Exeter
University of Exeter
INTO Building
Stocker Road
Exeter
EX4 4PY
United Kingdom



Through innovative partnerships with leading universities, we expand opportunities for higher education, ensuring success and transforming the lives of our students and staff.

INTO GIVING

Working across the globe, INTO Giving supports projects that increase access to education and improve the quality of teaching and learning. For more information visit www.into-giving.com

© INTO University of Exeter LLP, September 2019. Every effort is made to ensure that the information provided in this document is correct at the time of publication. However, from time to time there may be occasions where some of the information has changed since the date of publication. The most up-to-date information can be found on our website at www.intostudy.com/exeter - please refer to this before submitting your application. If, in our opinion, we consider that any change has been made which has a material impact on any offer that has been made to you to study with us, we will inform you of these changes in writing. The information provided in this document is subject to INTO University of Exeter's terms and conditions, which can be accessed at www.intostudy.com/exeter/terms
INTO University of Exeter LLP, registered number: OC323693.
Registered office: One Gloucester Place, Brighton, BN1 4AA
Education provider sponsor number 3FMMCWY2

