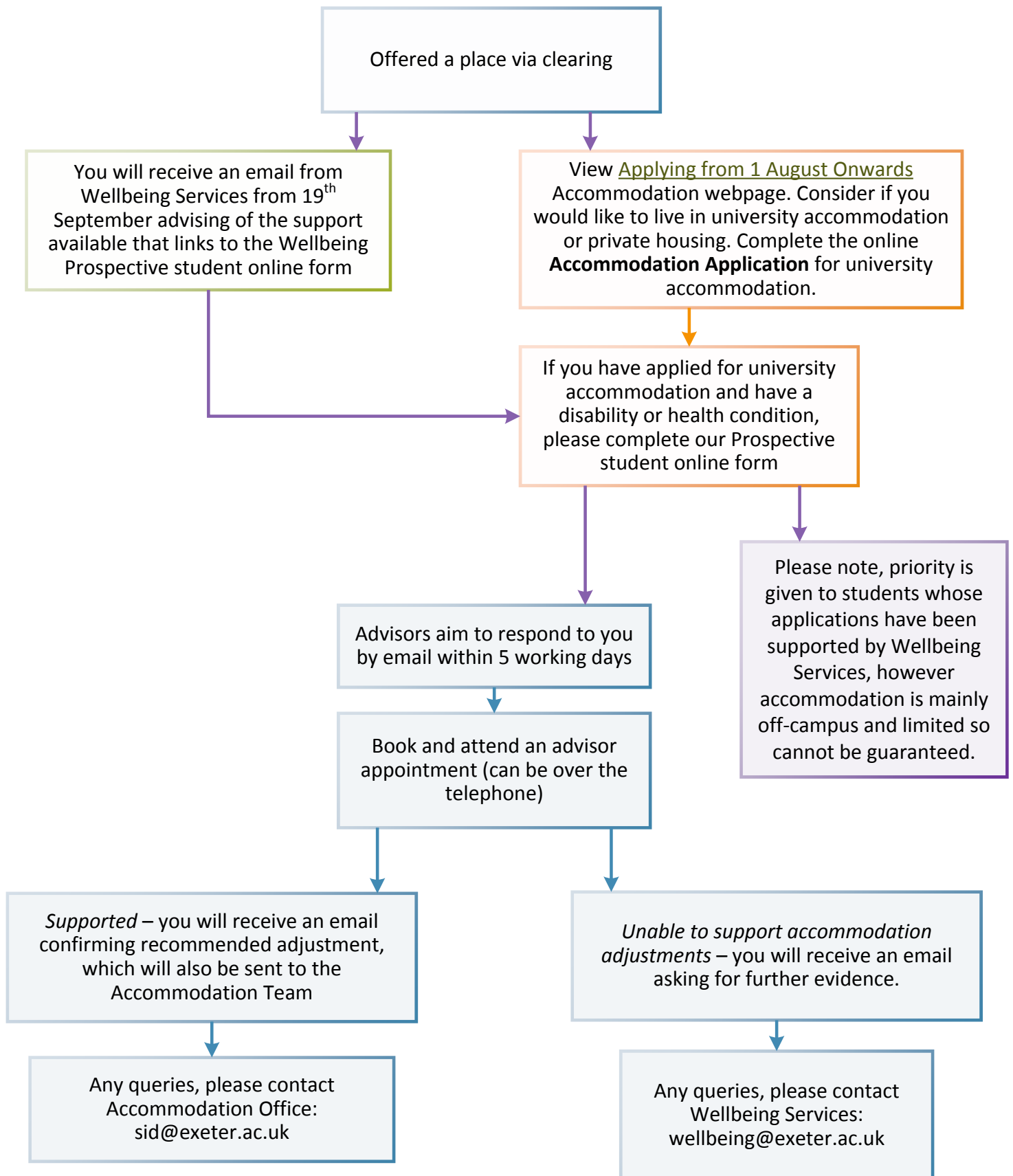


## Clearing and Adjustment Accommodation Process with Wellbeing Services:



**If you wish to apply to return to University accommodation due to disability/health grounds for the next academic year**, you will need to apply in January as a Medical Supported Returner. You will need to provide written support, which can be from Wellbeing Services or the Student Health Centre. Read more at: <https://www.exeter.ac.uk/accommodation/students/currentstudents/returningstudents/>