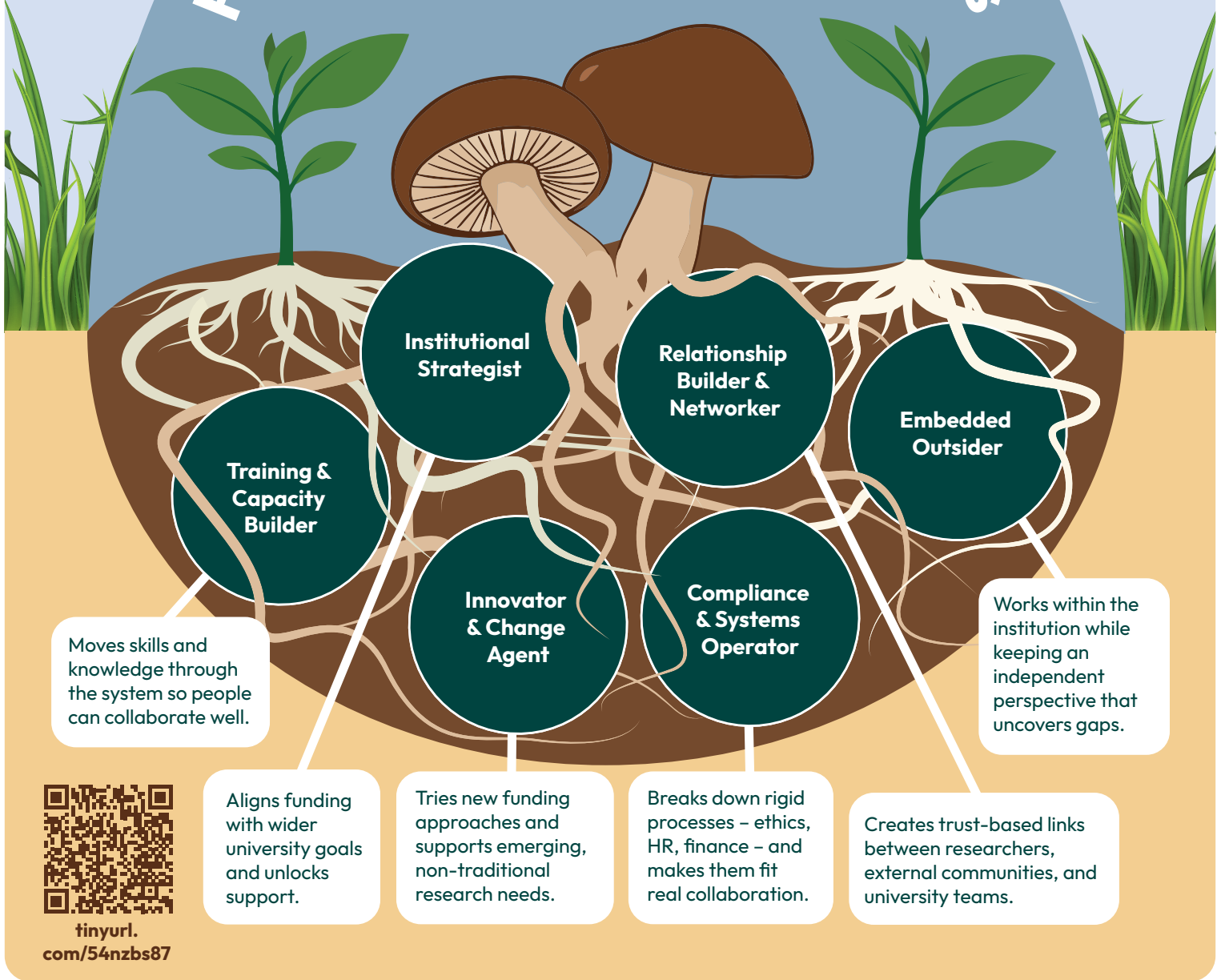


Participatory Research Funding: The Role and Value of Public Engagement Professionals

Participatory Research is a collaborative approach where researchers and community partners work together to shape the research process, ensuring outcomes are equitable and socially relevant.

Public Engagement Professionals are professional services staff whose primary role is to support, develop, and lead activities that engage community partners, other stakeholders, and the public within research processes.

Public Engagement Professionals are like a mycelium network; quietly linking people, ideas, and communities beneath the surface. They sense where connection is needed, share knowledge across boundaries, and enrich the environment so collaboration can grow. Their work is often unseen, but help sustain the whole ecosystem of learning, trust, and collective progress.



tinyurl.
com/54nzbs87

This work was commissioned by Public Engagement Professionals from:

