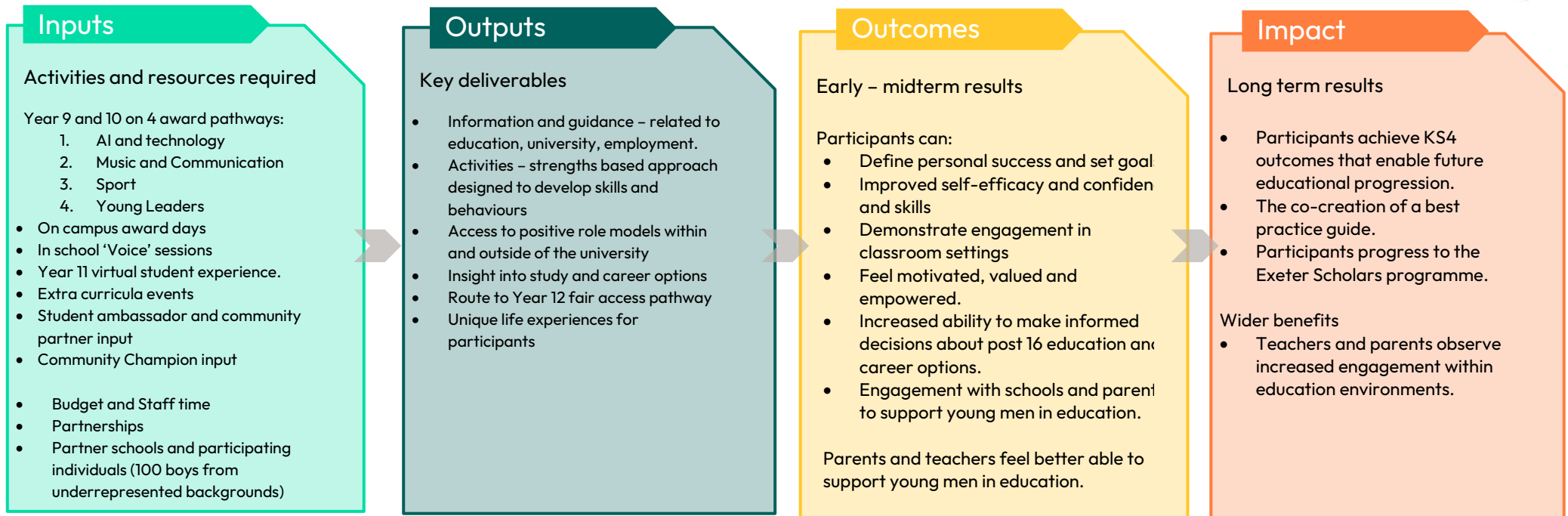


Theory of Change: Community Exe



Assumptions (related to individuals who take up the activity)

Programme aims to address barriers / assumptions identified through literature review including: Individual aspirational factors and future orientations/ expectations; Acquired working class masculine stereotypes and self-perception; Knowledge gaps for decision making; Geographical barriers; Behaviour issues, absences and exclusions; Fear of unfamiliar environments/low social confidence with new people.

Assumptions (related to early changes in attitude or behaviour by activity)

Participants join the programme with the intention to positively engage with the opportunities offered; activities and inputs address the assumed barriers e.g. individual expectations, identity and self-perceptions; self-confidence and knowledge gaps.

there will be external risk factors to the intended outcomes and impact which are beyond the control of the programme.

Assumptions (related to benefits and possible unintended consequences)

Teachers will positively contribute to the programme evaluation potentially identifying additional unintended benefits; parents and carers will positively engage; youth work-based and single gender approaches will work positively with this group.

It is assumed that being a pilot programme there may be changes to the inputs as the first cohort progresses.