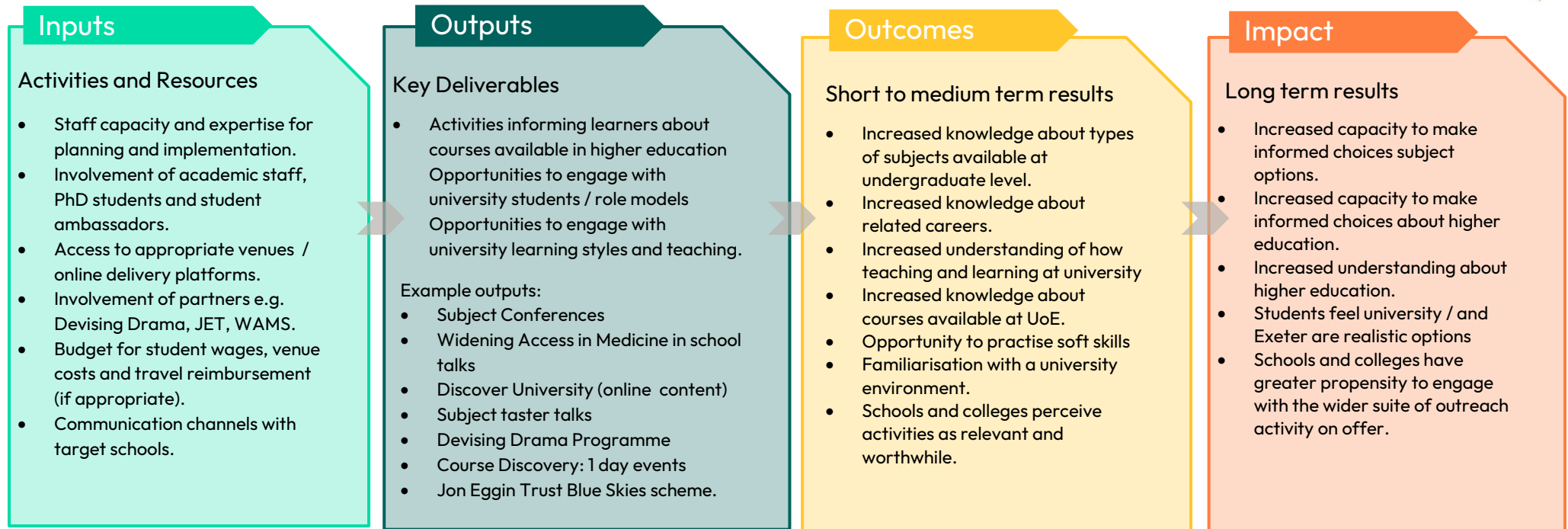


Theory of Change: Subject knowledge development KS4/5: Course Discovery



Assumptions (related to individuals who take up the activity)

- Patterns of under-representation can be seen by subject.
- Lack of exposure to subject-specific knowledge may lead to students inadvertently limiting their options when choosing study routes.
- Many subjects at undergraduate level are not taught within school and understanding about what these entail and related careers may be limited.
- Exposure to discipline research and university style teaching will help inform decision making.

Assumptions (related to early changes in attitude or behaviour by activity)

- Activities are engaging and well delivered.
- Role models are relatable.
- Activities are enjoyable.
- Activities are appropriate targeted and engage with the right students.
- Schools are willing and able to engage with activities.
- School perceive engagement as relevant and beneficial to their students.
- Not all students chosen by schools to attend will perceive these activities as relevant them.

Assumptions (related to benefits and possible unintended consequences)

- Activities are complementary to school-based learning.
- Students are encouraged rather than intimidated by their exposure to university learning / campus.
- Engagement with these types of activities helps to strengthen university/school relationships.
- Activities are part of a wider scheme of effective engagement with target schools.