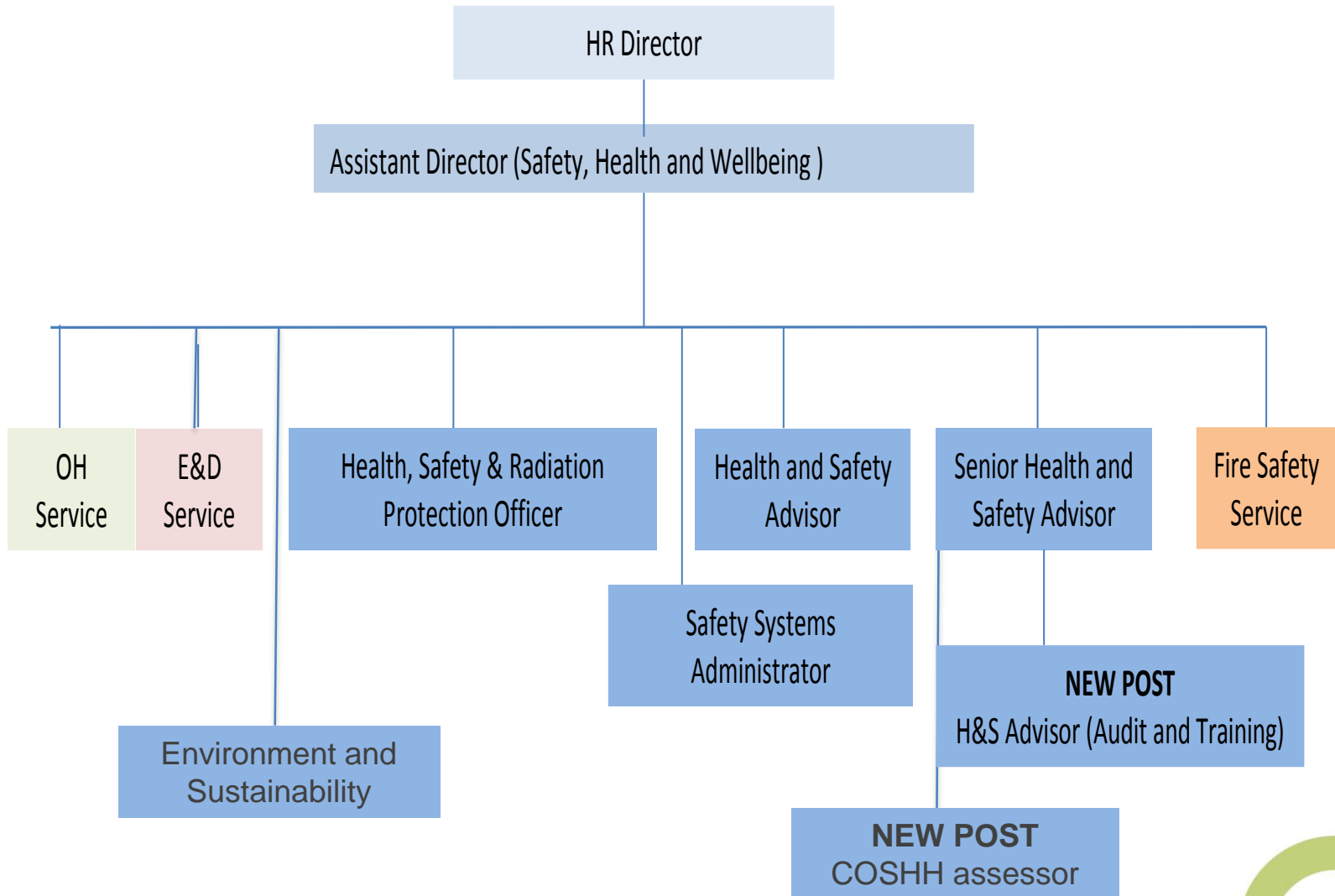


# Lab Safety - What's Changed at Exeter?

Mike Wetherell, Senior Health and Safety Advisor  
(Scientific and Technical)



# Safety, Health and Wellbeing?

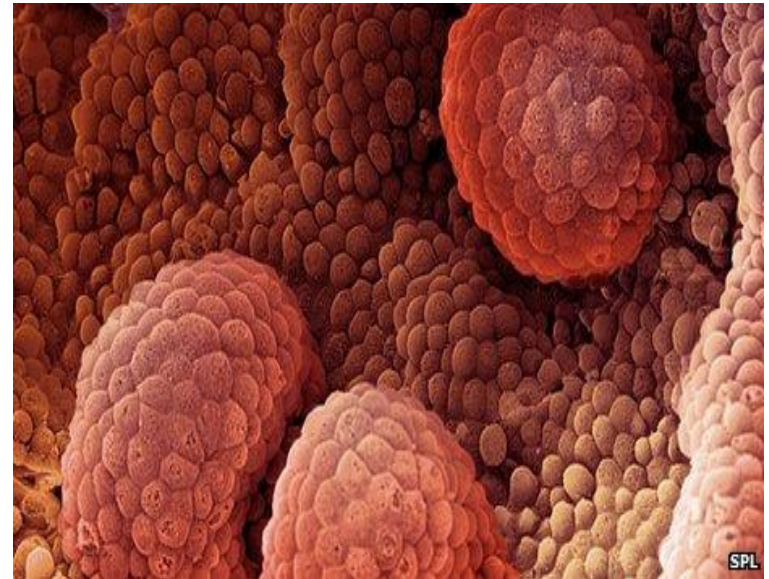
## YOU COULDN'T MAKE IT UP ...

*Among the other ludicrous examples revealed by the Health and Safety Executive were:*

- A hospital stopped a relative heating a patient's meal in the microwave.
- A gym-goer was told by an administrator that he could not lift weights unless he was wearing trainers.
- Campers were told they would have to pay for two plots because they had a camper van and tent.
- A school tree-house had to be located outside school grounds because of health and safety fears.



# Your Health and Wellbeing





'Advanced lighting source' give training to all new staff before they enter the facility.....it would seem this member of staff didn't pass!

**1.2M**

working people  
suffering from a  
work-related illness

**142**

workers killed at  
work

**8K**

deaths and  
13 500 new cases  
Estimated of  
occupational cancer  
per year

**30K**

report they  
currently have  
breathing/lung  
problems

<http://www.hse.gov.uk/statistics/>

# The Good News!

- Figures at a record low on the 40th anniversary (2014) of the Health and Safety at Work Act.
- The number of people who lose their lives at work has dropped sharply by 87% over the past forty years, from over 650 in 1974 to a record low of 142 today.
- The number of injuries at work has also reduced considerably by 77% over the same time period, from 336,701 to 78,222.

# Lab data collection!

UNIVERSITY OF EXETER Submit Lab01

**UNIVERSITY OF EXETER – Hazard profile – data collection Form – LAB01**

PLEASE NOTE: ALL SECTIONS OF THIS FORM MUST BE COMPLETED, WITH DETAILS AS ACCURATE AND FULL AS POSSIBLE.

Name of person completing form		Date completed	
Lab / workshop name	Room number		
Campus	Streatham	Building	Floor
Discipline	Unique room ID		
Emergency contacts – for this lab including out of hours – in order of priority		Landline (with code)	Mobile
Position			
Location of isolation facilities		Inside lab (brief description)	Outside lab (brief description)
Electricity			
Gas			
Water			
Science gas from external source – specify type of gas and isolation			
Describe any areas that should not be moved / touched in an emergency			

## WHAT DID WE COLLECT?

Emergency contacts

Isolation locations

Hazard identification in particular high areas and processes

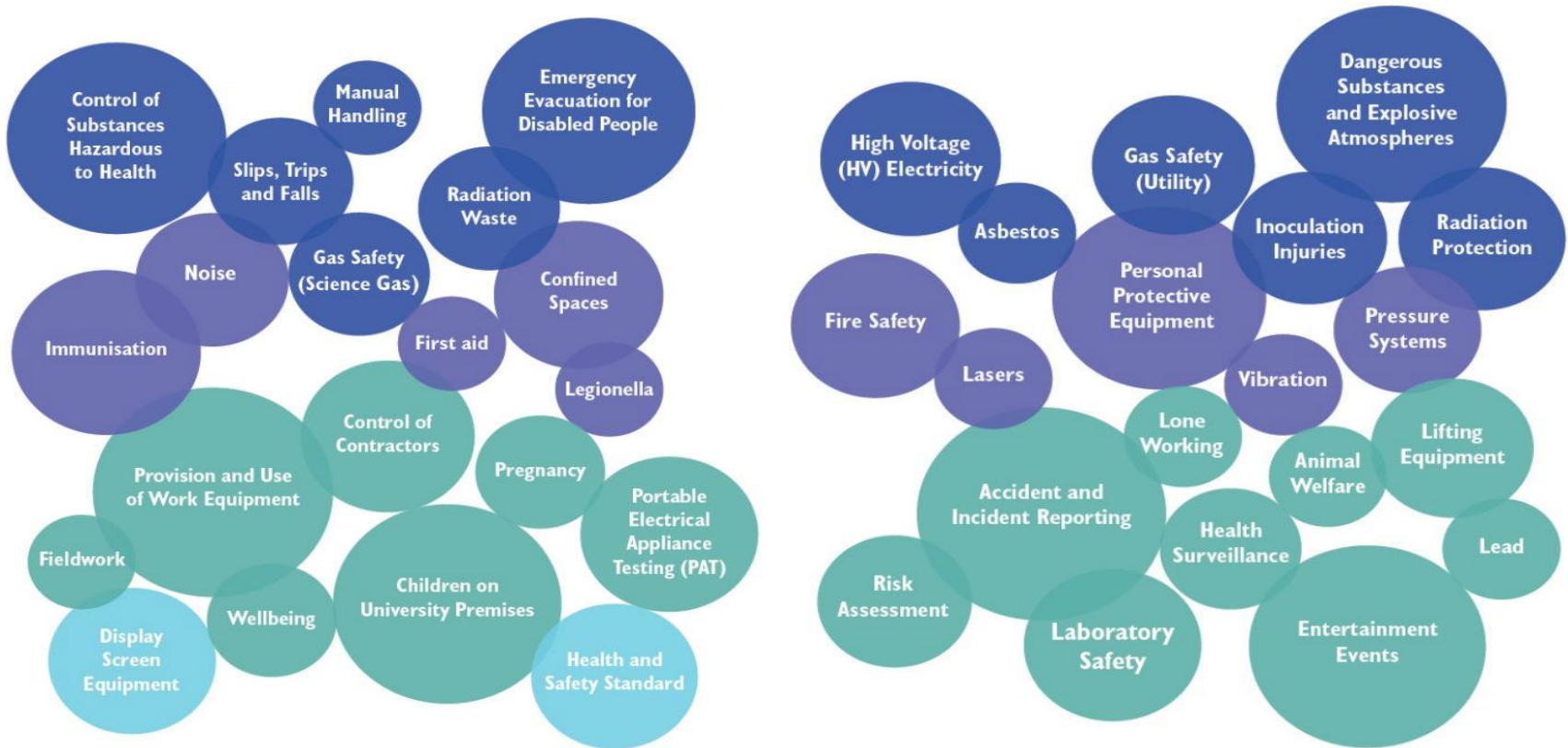
---

## WHY DID WE COLLECT?

Planning responses

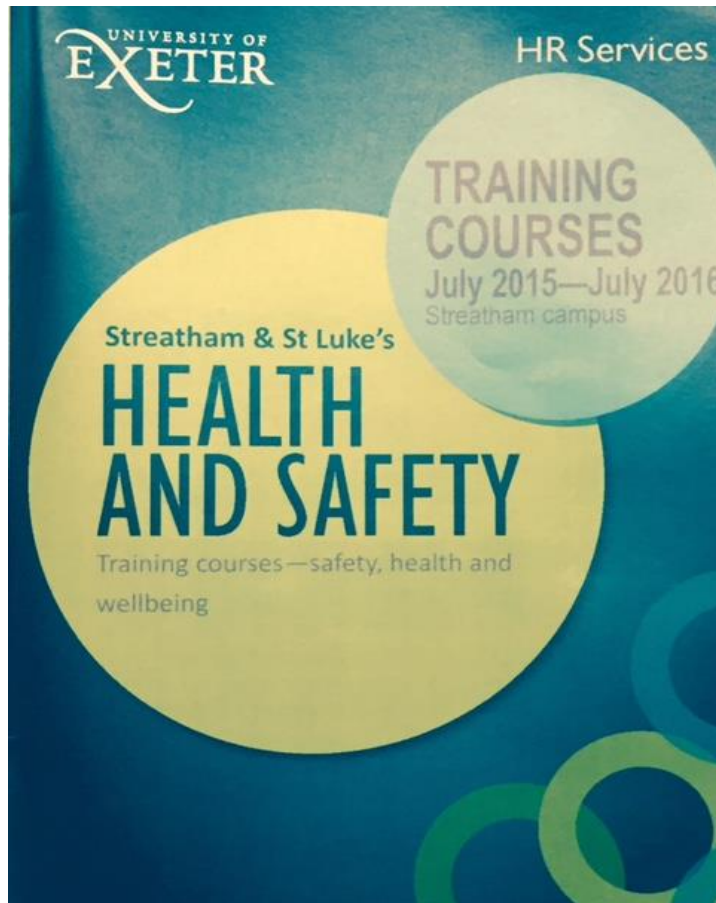
Planning for hazards identified

# Safety Standards!



<http://www.exeter.ac.uk/staff/wellbeing/safety/>

# Training



Introduction and refresher to Health and Safety

Risk assessment

Manual handling

COSHH

Fire

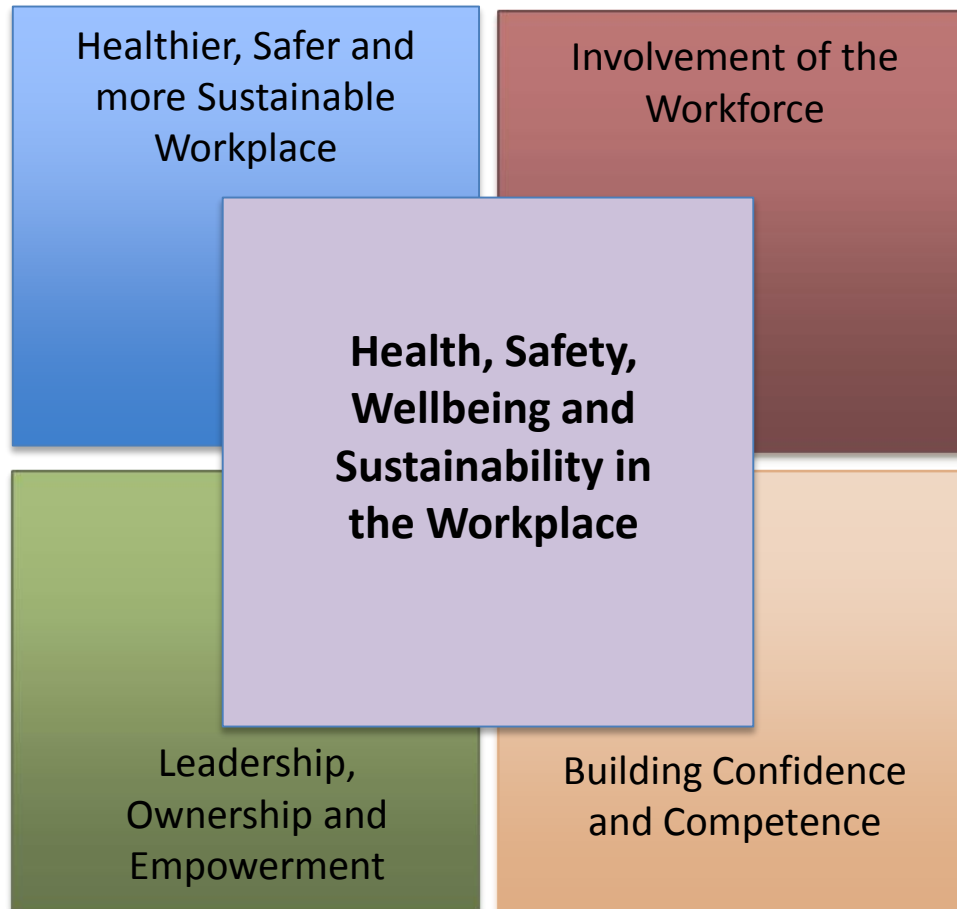
Lasers

Radiation

Bottled gas

<http://www.exeter.ac.uk/staff/wellbeing/safety/healthandsafetytraining/>

# 'S' Lab Project- Safe and Sustainable





<https://www.youtube.com/watch?v=6aK2CKrdjbE>

[safety@exeter.ac.uk](mailto:safety@exeter.ac.uk)

01392 726345