

Introduction to Exeter

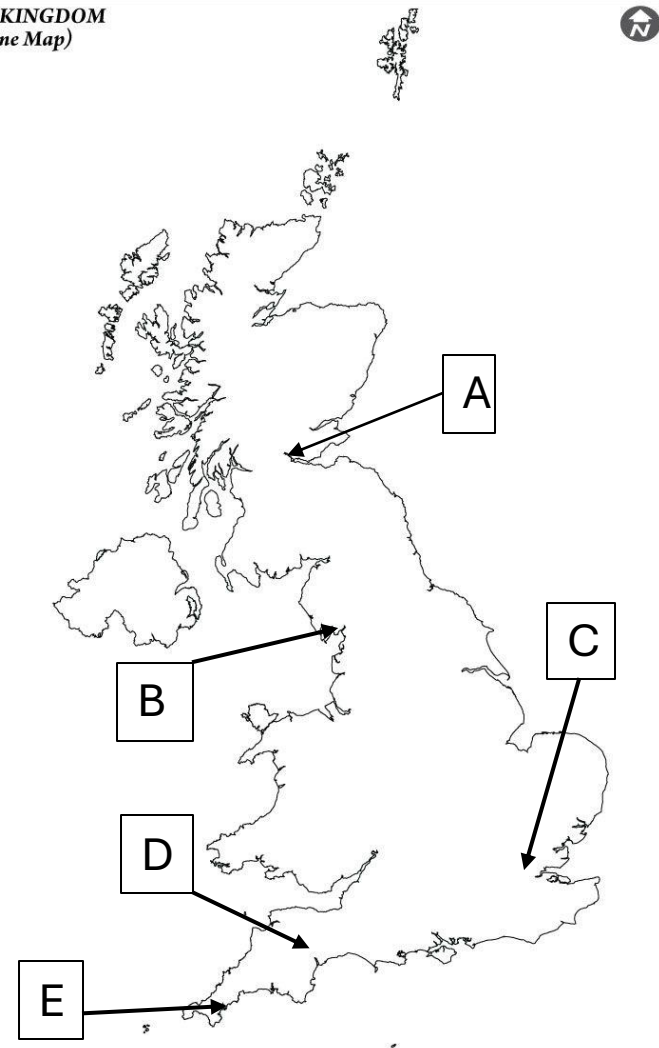
2026 entry

Location

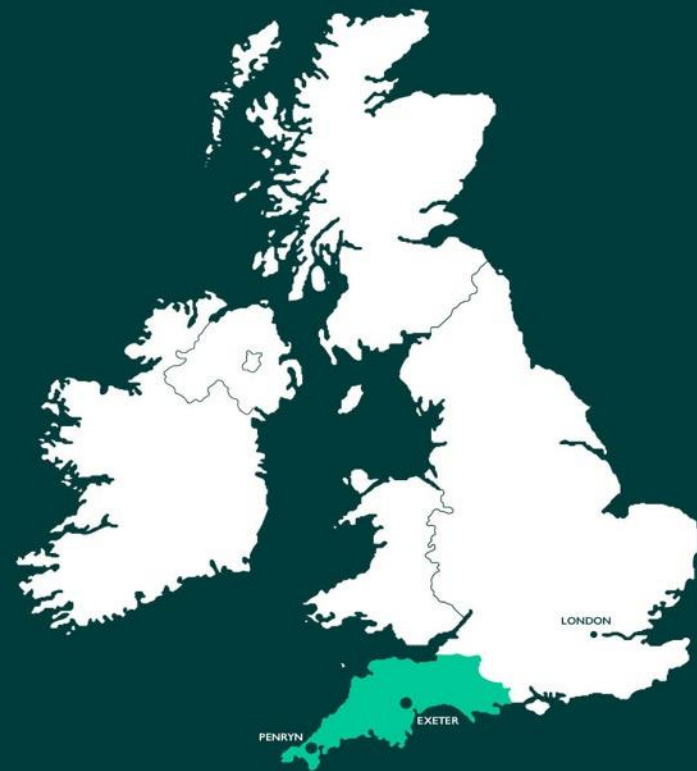


University
of Exeter

UNITED KINGDOM
(Outline Map)



Location



University
of Exeter



University
of Exeter

Locations

Streatham Campus



Cornwall

Penryn

Penryn Campus

Truro

Knowledge Spa

Devon

Exeter

Streatham Campus

St Luke's Campus
RILD Building (Royal Devon
and Exeter Hospital)
CSRC (Royal Devon and
Exeter Hospital)



2023/24



University
of Exeter

Locations

St Luke's Campus



Cornwall

Penryn

Penryn Campus

Truro

Knowledge Spa

Devon

Exeter

Streatham Campus

St Luke's Campus

RILD Building (Royal Devon
and Exeter Hospital)

CSRC (Royal Devon and
Exeter Hospital)



2022/23



University
of Exeter

Locations

Penryn Campus



Cornwall
Penryn
Penryn Campus

Truro
Knowledge Spa

Devon
Exeter
Streatham Campus
St Luke's Campus
RILD Building (Royal Devon
and Exeter Hospital)
CSRC (Royal Devon and
Exeter Hospital)



2024/25

Our city

A small city with a big footprint, Exeter is one of the most **vibrant, attractive and historically interesting** cities in England.

The capital city of Devon – and one of the **‘foodie’ capitals** of southwest England

One of the **oldest cities** in the UK, pre-dating the arrival of the Romans in AD 50

UNESCO City of Literature and UNESCO Creative Cities Network

Exeter city centre is the **“greenest”** in Britain based on tree coverage and the presence of parks (BBC, 2022).

Located in one of the **top 3 safest counties** to live in the UK – Devon and Cornwall ranked third for safety with the lowest crime rate in England and Wales (UK Office for National Statistics, 2024)





Things to do

Attractions

- Unique underground passages
- Free Red Coat Guided Tours
- Magnificent Cathedral
- Roman wall
- Quayside
- Royal Albert Memorial Museum



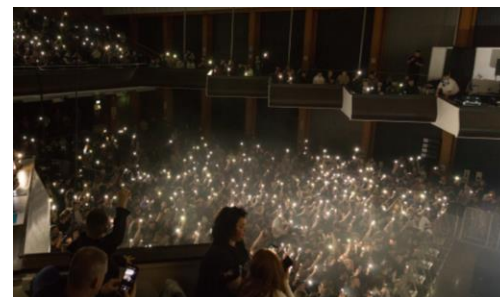
Shopping

- Award-winning Princesshay and Guildhall shopping centres
- Gandy Street
- Castle Quarter – home to the famous Cavern Club and the Exeter Phoenix
- West Quarter – full of quirkier independent shops situated in attractive older buildings and arcades



Art and culture

- Exeter is a destination for top sporting events and music
- A good mix of independent venues
- Festivals throughout the year: Exeter Craft Festival, Exeter Street Food Festival, Heritage Harbour Festival, Quayside Shanty Festival, Jazz on the Quay





Stats and rankings

About us



University
of Exeter

RUSSELL GROUP

World class,
research-intensive
universities



30,000 students
from over
150 countries



In touch with over
185,000 alumni in
183 countries across
the world



7,400 staff
from more than
100 countries



Top 30 in the world for
our progress towards
delivering the UN
SDGs in the 2025 THE
Impact Rankings¹



Teaching Excellence Framework

Rated triple
Gold in the 2023
Teaching Excellence
Framework²

TOP 15

in the Complete
University Guide 2026
and The Times and
The Sunday Times Good
University Guide 2025



Exeter graduates in
the top 10 for most
targeted by leading
UK employers³



=155th in the QS World
University Rankings 2026



More than 90% of our
research has internationally
excellent impact⁴

¹=28th in the Times Higher Education Impact Rankings 2025

²Gold Overall rating, with Gold ratings in both Student Experience and Student Outcomes

³The Graduate Market in 2024 report by High Fliers Research

⁴Our research impact profile in REF2021 was 93.6% of 4* + 3*

League tables



University
of Exeter

UK RANKINGS:



GLOBAL RANKINGS:



*Leiden ranking is based on the percentage of outputs in the top 10 percent most-cited for all sciences.

Studying at Exeter

Our faculties



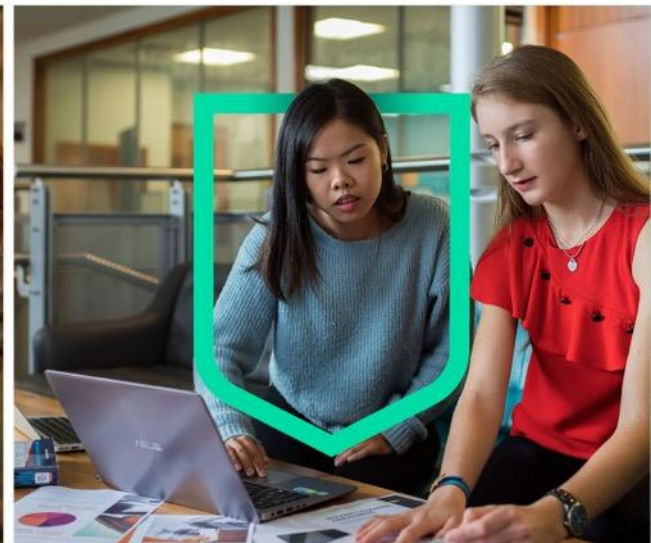
University
of Exeter



Faculty of Health
and Life Sciences



Faculty of Humanities,
Arts and Social Sciences



Faculty of Environment,
Science and Economy



University
of Exeter

Accounting

Anthropology

Arab and Islamic Studies

Archaeology

Biosciences

Business and Management

Classics and Ancient History

Climate Change

Computer Science

Creative Industries

Data Science and Analytics

Drama

Ecology and Conservation

Economics

Education and Teacher Training

Engineering

English

Film

Finance

Forensics

Geography

Geology

Healthcare and Medicine

History

Law

Mathematics

Media and Communications

Mining Engineering

Modern Languages and Cultures

Philosophy

Physics and Astronomy

Politics and International Relations

Psychology

Public Policy and Public Administration

Renewable Energy

Security Studies

Sociology

Sport and Health Sciences

Theology and Religion





Academic wellbeing

- **Induction** – pre-arrival and on-campus
- **Academic Development Programme** – workshops (e.g., Maths help desk), mentoring and online resources
- **Academic (Personal) Tutor** – regular meetings to discuss progress and wellbeing
- **Student and Education Services and info hubs** – advice on practical issues
- **Wellbeing and Health Centres** – practical support on mental health, disabilities, and managing stress and workloads



University
of Exeter



International support services

- Visa and immigration support
- Campus security
- **Exeter Students' Guild** – home of student societies, events, representation, campaigns and advice
- Bespoke welcome week
- Intercultural Café
- 'Global Chums'
- International festivals on campus and across Exeter



University
of Exeter

Putting our students first

“Throughout my degree, Exeter has really tried to mitigate the barriers that OCD has presented between me and my studies, allowing me to give my course my very best go!

The University has taken great steps towards providing better mental health and wellbeing provision.”

Sophie, studying BA English at the Streatham Campus



University
of Exeter





Settling in

- International grocery stores <15-minute walk from Streatham Campus
- International welcome programme, including guided tours, shopping trips and life in the UK orientation sessions
- All students have access to the on-campus multi-faith chaplaincy, who support all students through events – e.g., Connections Café and soup lunches
- **Over 400** clubs and societies to explore...



University
of Exeter

International student life

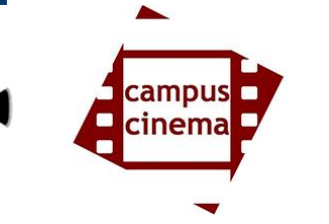
Over 7,000 international students contribute to our thriving, diverse community.



University
of Exeter



Getting involved



Sport

- £30 million invested to create some of the best university sporting facilities in the UK
- Welcome international athletes and novices
- 100 sports clubs in Exeter and Penryn
- Top 5 in the British Universities and Colleges Sport (BUCS) league for the last six years



University
of Exeter



Careers and Employability

Careers

- Dedicated careers team
- Skills training workshops and seminars
- Exeter Award and Exeter Leaders Award
- extra-curricular achievement awards to enhance employability
- Career Zone - careers advice and resources to enhance interview and application skills



University
of Exeter





Careers support

- Career Zone – advice and resources
- “Careers in..” talks and alumni panels
- “How to...” skills sessions
- 1:1 appointments and drop-ins
- Short-term placements and internships
- Job and placement fairs (8 in-person fairs planned for 2025-26), mock interviews, peer mentoring
- LinkedIn photo shoots
- Access to 7,000+ employers through Handshake and Student Circus
- Award-winning entrepreneurship and student startup programmes



University
of Exeter

Careers

'China Career Ready' and
'India Career Ready' help
students gain skills needed in
local graduate labour markets.



University
of Exeter



The Graduate Visa

- Enables graduates to stay and work in the UK for two years, or three for PhD graduates
- New visa required
- You must be in the UK to apply
- Your current visa must be a Student Visa or Tier 4 (General) Student Visa



University
of Exeter



Study abroad

- Many of our degrees offer study abroad options at one of our 200 international partner universities
- Modern Languages and Business School students can combine one semester study abroad with one semester of work abroad
- Students can benefit from undertaking a Summer School or Short Programme at some of the world's top universities



University
of Exeter



Study abroad – example partners



University
of Exeter

Accommodation

Accommodation in Exeter

- International student accommodation guarantee: for full-time first year undergraduates and postgraduates*
- All accommodation is either on campus or in the city, a maximum 30-minute walk away
- Catered or self-catered; standard, en-suite or studio rooms
- Apply online from April the year the course starts

**conditions apply*



Accommodation in Cornwall

- International student accommodation guarantee: for full-time first year undergraduates and postgraduates*
- On-campus; a 15-minute walk away; or in Falmouth, a short bus ride away
- Catered or self-catered; single or shared en-suite; studio rooms
- Apply online from April the year the course starts

**conditions apply*



Finance

International tuition fees



University
of Exeter

Academic year 2025/26:

Undergraduate	£24,700 (Accounting, Finance, Business & Management, Economics, Marketing, Arts, Humanities, Social Sciences (including Law)) > £45,700 (BMBS Medicine)
Postgraduate taught	£25,300 (some Humanities and Social Science subjects) > £44,700 (The Exeter MBA)
Postgraduate research	£23,000 > £29,600 (topic dependent) – excluding MRes

Funding

- Exeter Excellence Scholarships
- University of Exeter Undergraduate and Postgraduate Taught Country-specific Scholarships
- Commonwealth Shared Scholarships*
- Chevening Scholarships*
- GREAT Scholarships*
- Fulbright Awards*
- Progression and Alumni Scholarships*

exeter.ac.uk/fundingsearch

**postgraduate only*



Applying and Entry requirements

UG applications

- All applications through UCAS
- 15 October 2025 – all applications for Medicine should arrive at UCAS
- 14 January 2026 – equal consideration deadline
- 30 June 2026 – after this date, all applications entered through Clearing
- 5 July 2026 – Clearing opens



PG applications

- Apply directly to the university.
- Courses stay open as long as there are places.
- We advise international applicants to submit a complete application by mid-July and UK-based applicants by mid-August for September start
- We aim to make a decision within 20 working days from receipt of a complete application with all required supporting documents. The decision will be communicated to you by email.
- Deposits are required for full-time postgraduate taught programmes and Part-Time MSc Extreme Medicine.



PG applications – Jan 26

Not all of our Masters have a January start: below are the programmes available for January 2026.

Business and Management

[MSc Business Analytics](#)

[MSc Business and AI](#)

[MSc Business and Management](#)

[MSc International Business and Strategy](#)

[MSc Marketing Management](#)

Computer Science

[MSc Computer Science](#)

Data Science

[MSc Data Science](#)

[MSc Statistical Data Science](#)

Finance

[MSc Finance and Management](#)

Engineering

[MSc Engineering Business Management](#)

[MSc International Supply Chain Management](#)



University
of Exeter

International academic entry requirements

Vary by programme, but as a guide:

	Typical equivalent offer
Undergraduate	A*AA or IB 38 or 766 in 3 Higher Levels BBB or IB 30 or 555 in 3 Higher Levels
Postgraduate taught	2:2 (Hons) > 2:1 (Hons) or above
Postgraduate research	Often a Masters degree

Contextual offers for UG International Students



Entry requirements (typical offer)

Qualification	Typical offer	Required subjects
A-Level	AAB-ABB	GCE A-Level Maths grade B and another science* subject at grade B. Candidates may offer GCE A-Level Maths, Pure Maths or Further Maths
IB	34/665-32/655	HL 5 in Mathematics (Analysis and Approaches or Applications and Interpretations) and HL 5 in another science subject. Applicants achieving IB Maths SL7 plus IB HL6 in Physics will also be considered.
BTEC	DDD-DDM	Applicants studying one of the following BTEC Extended Diplomas will be considered without a GCE A-Level science subject (GCE A-Level Maths is still required): Applied Science, Aeronautical Engineering, Building Services Engineering Construction and the Built Environment, Civil Engineering, Operations and Maintenance Engineering, Computer Engineering, Electrical/Electronic Engineering, Engineering, Manufacturing Engineering, Mechanical Engineering, Environmental Sustainability.
GCSE	4 or C	Grade 4/C in GCSE English language
Access to HE	24 L3 credits at Distinction Grade and 21 L3 credits at Merit Grade.	12 L3 credits at Distinction Grade in an acceptable Mathematics subject area and 12 L3 credits at Distinction Grade in another science subject area.
T-Level	Distinction	T-Level in Design and Development for Engineering and Manufacturing, or T-Level in Design, Surveying and Planning for Construction. GCE A-Level Maths is still required.
Contextual Offer	A-Level: BBB-BBC IB: 30/555-28/554 BTEC: DDM-DMM	Specific subject requirements must still be achieved where stated above. Find out more about contextual offers.



University
of Exeter

English language requirements

Vary by programme,
but as a guide:

	IELTS overall score	TOEFL overall score
Undergraduate	6.5	90
Postgraduate	6.0 – 7.5	87 – 110

Scan for more details:



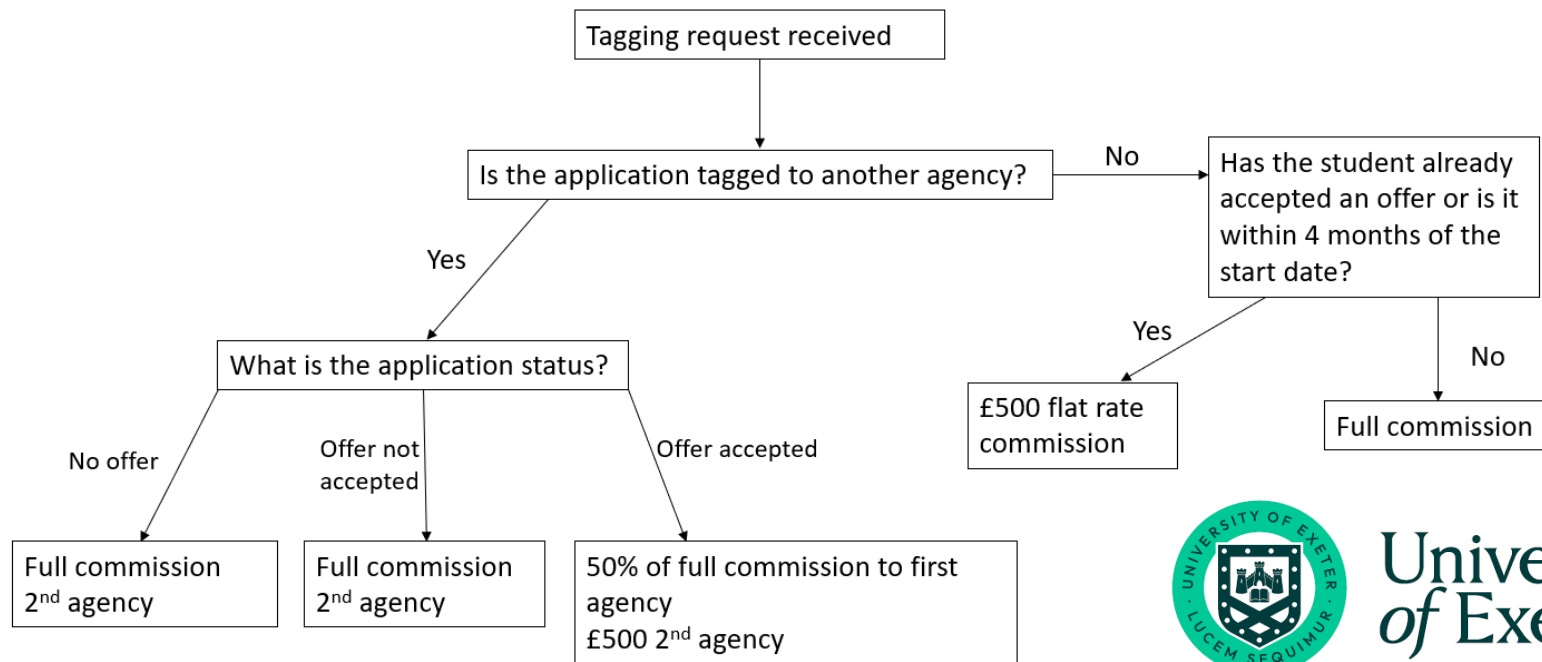
Tagging your application

- Undergraduate: submit an application using your UCAS buzzword, or nominated contact (ensuring you use the agency name) OR submit a completed representation form to your regional team contact.
- Postgraduate: select your agency as part of the university's online application form OR submit a completed representation form to your regional team contact.
- Education Agents may be required to provide evidence of the counselling provided e.g. copies of email correspondence in the event of uncertainty or a claim by another Education Agent



We expect that most students will have been directly counselled by one agency from the start to the end of their applicant journey. Whilst we strongly discourage students from switching agents, we understand that there are some circumstances where students must do so. We monitor the number of students switching agents, and this will be taken into consideration as part of our annual reviews.

Please note that this is for guidance only and a final decision will be made by the University of Exeter.



University
of Exeter

Agent Quality Framework (AQF)

Our expectations under the AQF

- Adhere to the National Code of Ethical Practice for UK Education Agents
- Student-facing counsellors to complete an appropriate UK Credited training programme such as British Council UK Agent and Counsellor Certified Training
- Promote the 'Student Guide to Choosing an Education agent'
- Be transparent around use of sub-agents including providing lists of sub-agents you work with, and ensuring your sub-agents are suitably trained
- <https://youtu.be/hdmxEQgVzYA>

**Ensuring a quality experience
for international students**



Further Information

More resources

[Agent website](#)
[Request for Representation Form](#)
(tagging applications)

[Global Exeter](#)
[International Students](#)
[International Student Community](#)

[Undergraduate study pages](#)
[Postgraduate study pages](#)
[Clearing](#)
[English Language Requirements](#)
[International Entry Requirements](#)

[Funding Database \(scholarships\)](#)

[Virtual Campus Tours](#)
[Virtual Accommodation Tours](#)

[Careers](#)
[Alumni and Supporters](#)
[Chat with a student](#)



Contact information



Regional contact details:

- Americas: USA, Canada, Latin America: Americas@exeter.ac.uk
- East Asia: China, Hong Kong, Taiwan, Japan and South Korea: eastasia@exeter.ac.uk
- Middle East and Turkey: mena@exeter.ac.uk
- Asia Pacific: Thailand, Malaysia, Singapore, Indonesia, Vietnam: asiapacific@exeter.ac.uk
- India Office: india@exeter.ac.uk
- Africa: exeter.Africa@exeter.ac.uk
- South Asia: Pakistan, Nepal, Bangladesh, Sri Lanka (excluding India): southasia@exeter.ac.uk
- Europe and Central Asia: EU Countries, Azerbaijan, Kazakhstan, Georgia: EuropeInternational@exeter.ac.uk
- UK International: ukinternational@exeter.ac.uk

Admissions:

- Undergraduate: ug-ad@exeter.ac.uk
- Postgraduate Taught: pg-ad@exeter.ac.uk
- Postgraduate Research: pgrenquiries@exeter.ac.uk

Complete our quiz!



Complete our quiz (2-3 mins) and we'll send you a certificate to confirm you have completed this training:



<https://forms.office.com/e/0RXgxt1hNY>

Thank you!

Any questions?