

Faculty of Health and Life Sciences

Ian Watson
Strategic Marketing Partner



Faculty of Health and Life Sciences

TOP **50**

**Top 40 in the world for
Sports-related subjects**

Ranked 37th in QS World University
Subject Rankings 2025

TOP **100**

**Top 100 in the world for
Anatomy and Physiology**

Ranked 51-100 in QS World
University Subject Rankings 2025

TOP **150**

**Top 125 in the world for
Psychology**

Ranked 101-125 in the Times Higher
Education World University Rankings
2025 By Subject

TOP **150**

**Top 150 in the world for
Nursing**

Ranked 101-150 in the QS World
University Subject Rankings 2025

TOP **150**

**Top 125 in the world for
Life Sciences**

Ranked 101-125 in the Times
Higher Education World
University Rankings 2025

TOP **200**

**Top 175 in the world for
Medical and Health**

Ranked 151-175 in the Times Higher
Education World University Rankings
2025

TOP **200**

**Top 200 in the world for
Medicine**

Ranked 197th in QS World University
Subject Rankings 2025



University
of Exeter

Faculty of Health and Life Sciences



3rd in UK for Radiography

The Times and The Sunday Times
Good University Guide 2025



3rd in UK for Sports Science

The Times and The Sunday Times
Good University Guide 2025



**5th in UK for Nursing and
Midwifery**

The Complete University Guide 2026



5th in UK for Sports Science

The Complete University Guide 2026



**6th in UK for Health
Professions**

The Guardian University Guide 2025



9th in UK for Psychology

The Guardian University Guide 2025
and The Complete University Guide
2026



**9th in UK for Medical
Technology & Bioengineering**

The Complete University Guide 2026



12th in UK for Biology

The Guardian University Guide 2025



**12th in UK for Biomedical
Sciences**

The Guardian University Guide 2025



University
of Exeter

Faculty Facts



Rated **Triple Gold** in the
Teaching Excellence
Framework

TEF 2023



A diverse community of
7,027 students (by
headcount) in 2024/25



1,011 FTE
academic and
research staff



£66.3m in research
awards in 2023/24



Part of the prestigious
Russell Group of UK
universities



49% of all University
citations per FTE

QS 2023/24



88 citations per
research paper

QS Life Sciences and Medicine ranking
2024



100% of our Life Science
research rated world-leading
or internationally excellent

REF 2021



University
of Exeter

This Presentation

- Discontinued Programmes (UG / PGT)
- New Programmes for 2026 (UG / PGT)
- Coming Soon
- Research Strengths
- In the Media



Discontinued Programmes (UG)

- For 2026:
- **BSc (and MSci) Biological and Medicinal Chemistry**
- Was confusing with Biomedical Sciences also now in the portfolio
- Only BSc (and MSci) Biochemistry now (with increased capacity)



New Programmes for 2026 (UG)

- **Psychology with Data Science**
- **Neuroscience with Data Science**
 - Third year is Data Science (4 year programme)
 - 'Transfer on' programmes (not direct application)
 - Will help 'sell' BSc Psychology and Neuroscience programmes
- Expansion of BSc / MSci Biochemistry
 - More international student profile and previously capped at 50 or so



Nursing – NMC Accreditation



Adult Nursing

St. Luke's Campus



**5th in the UK for
Nursing and
Midwifery**

The Complete
University Guide 2026



**Top 10 in UK for
Health
Professions**

6th in The Guardian
University Guide 2025



**1st in the Russell
Group and 2nd in
the sector for
student
satisfaction**

National Student Survey
(NSS) 2024



**Accredited by the
Nursing and
Midwifery Council
(NMC)**

Adult Nursing BSc

UCAS Code:

- B700

Duration:

- 3 years

Entry Requirements:

- A-Level: BBB
- IB: 30/555
- BTEC: DDM



Nursing (MSci)*

St. Luke's Campus

TOP 5

**5th in the UK for
Nursing and
Midwifery**

The Complete
University Guide 2026

TOP 10

**Top 10 in UK for
Health
Professions**

6th in The Guardian
University Guide 2025



**1st in the Russell
Group and 2nd in
the sector for
student
satisfaction**

National Student Survey
(NSS) 2024



**Accredited by the
Nursing and
Midwifery Council
(NMC)**

Nursing (Adult or combined Adult and Mental Health) MSci*

UCAS Code:

- B700

Duration:

- 4 years

Entry Requirements:

- A-Level: BBB
- IB: 30/555
- BTEC: DDM

*Route allows registration in Adult or combined Adult / Mental Health nursing.



BSc Biomedical Sciences

- Launched in 2025 to replace Medical Sciences
- Larger cohort / recruited well in 2025
 - 20 over recruitment target



Discontinued Programmes (PGT)

For 2026:

- **Healthcare Leadership and Management**
 - Replaced by Global Healthcare Management which has wider / more international reach
- **Paediatric Medicine and Health**
- **Pandemic Pathway for Master of Public Health** (has new Nutrition pathway)



New Programmes for 2026 (PGT)

- **MSc Primary Care**

- Upgrade from previous PG Dip
- Developed in conjunction with the Royal College of GPs (RCGP)
- Aimed at GPs, nurses, paramedics, physios, mental healthcare workers and policymakers
- First port of call health systems and ongoing care for the public
- Covers health inequality, global health, quality of care, infomatics, prevention and promotion



New Programmes for 2026 (PGT)

- **MSc Sports and Exercise Nutrition**

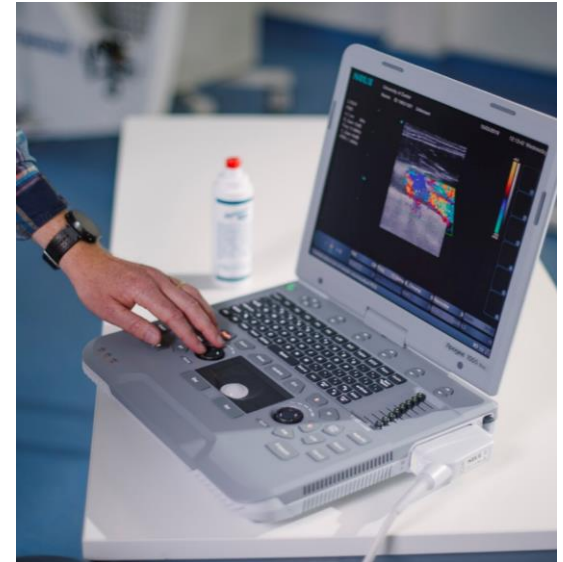
- PGT (vs previous UG)
- Focus on Sports Nutrition
- Advanced labs / research kitchens
- Careers: Sports Nutritionist or Dietitian, Exercise Physiologist, Health and Wellness Coach, Corporate Wellness Consultants, Sports Nutrition Product Development, Strength and Conditioning Coaches, Fitness Instructors, and Personal Trainers



University
of Exeter

New Programmes for 2026 (PGT)

- **Neuroscience (Data Science)**
- **Psychological Research Methods (Data Science)**
 - New Data Science Pathways within the above PGT programmes
- **Health Data Science (online)**
 - New option for HDS
 - Three intakes – Jan / April / Sept
 - Face to face programme still available (Sept start)



New Programmes for 2026 (PGT)

- **Master of Public Health (MPH) Nutrition Pathway**

- Covers improving population health in the light of global challenges.
- Nutrition across the life cycle, food policy, prevention of diet-related diseases and sustainable food systems.

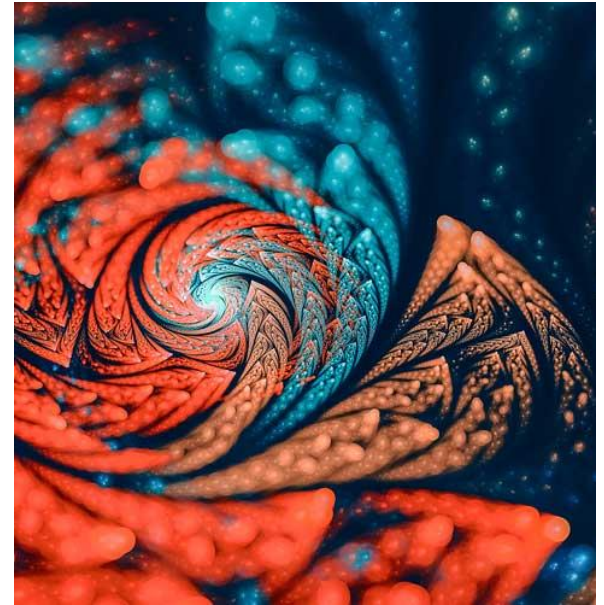


University
of Exeter

New Programmes for 2026 (PGT)

Technically launched in 2025:

- MSc Psychedelics: Mind, Medicine and Culture
- MSc Global Healthcare Management
- MSc Medical Imaging
- MSc Immunology



Simplified Entry Reqs for PGT

- Any level 2:2
- Any level 2:1 (limited number of programmes)
- Subject requirements still apply



Coming Soon (for 2026)

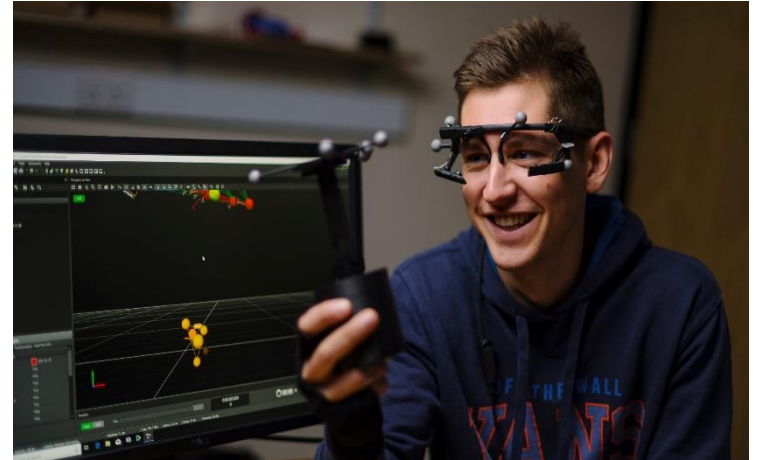
- UG Sport Business Management
- PGT Psychology Conversion (Sport)



University
of Exeter

Key International Programmes

- BSc Biomedical Sciences
- BSc Neuroscience
- BSc Psychology
- BSc Biochemistry
- Master of Public Health (MPH)
- MSc Psychology Conversion
- MSc Clinical Psychology
- MSc Health Data Science
- MSc Genomic Medicine
- MSc Sport and Health Sciences
- MSc Sport and Exercise Medicine
- MSc Sports Management
- MSc Advanced Biosciences (and Business)
- MSc Global Healthcare Management



Master of Public Health

- In collaboration with the Business School
- World-renowned public health experts
- Meets common core requirements of the Association of Schools and Programs of Public Health (ASPPH)
- Specialist pathways
 - Global Health
 - Pandemics
 - Public Mental Health
- Key programme for Faculty development / post-COVID world



Psychology PGT

- Psychology Conversion (face to face and online)
- Clinical Psychology
- Facilities:
 - 120 staff, over 500 PGT students
 - Specialist laboratories
 - Audio-visual suite
 - Dedicated PGT computer lab



Health Data Science

- ‘Big Data’ / AI – unlock health knowledge from complex datasets
- No medical / health background required
 - **No statistics / coding background required**
- Research projects using real health data sourced from biobanks, genomic and health services resources
- Now with online options



Sports Management

- Sports + Business
 - Marketing
 - Entrepreneurship
 - Sport and exercise psychology
 - Sport and leadership
- In collaboration with the Business School
- Access links with:
 - Exeter Chiefs Rugby Union Club
 - Exeter City Football Club
 - Yeovil Town Women's F.C.
 - Commando Training Centre Royal Marines
- Exeter currently top 5 in UK uni sports
- UG programme launching soon



University
of Exeter

Contact Details

Website: www.exeter.ac.uk/faculties/hls/

Enquiries: HLSEnquiries@exeter.ac.uk

Online enquiry form: www.exeter.ac.uk/enquiry

Phone: +44 (0)1392 727272





University
of Exeter

Our Research Portfolio

Thematic areas of research

**Food, metabolism and
nutrition**

**Lifelong diseases and
multi-morbidity**

**Infectious
diseases**

**Neuroscience,
psychology and
mental health**

**Sports and
rehabilitation**

**Research methods,
data science and
bioinformatics**

**Health and care
policy, technologies
and services**

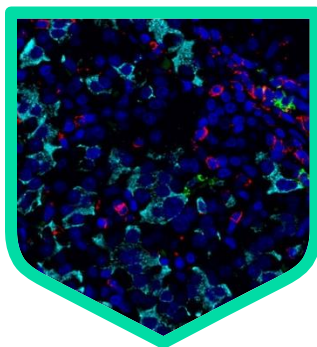
**Environment, climate
and health**

**Genes, molecules,
cells and biology**

Our research in

Medicine and Health

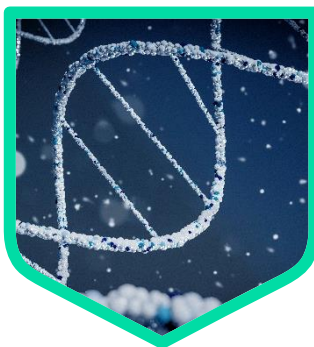
Diabetes



Primary Care



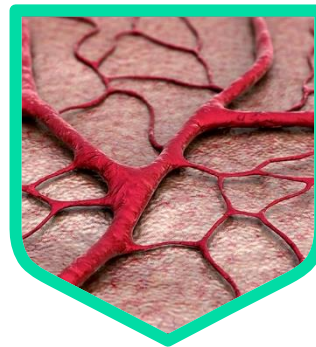
Genomics



Cancer Diagnosis



**Cardiac
Rehabilitation**



Child Mental Health



Nature and Health



Dementia

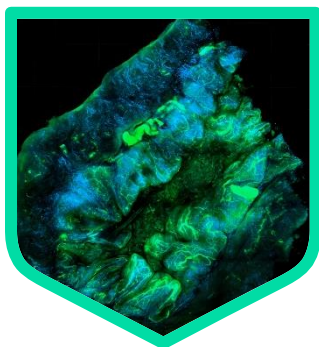


**Antimicrobial
Resistance**

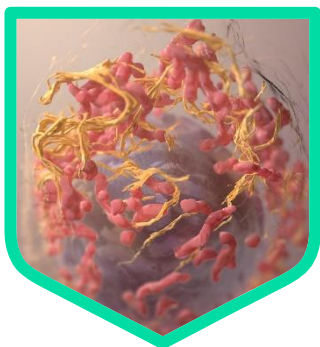


Our research in
Biosciences

**Cell and
Developmental Biology**



**Biochemistry and
Molecular Microbiology**



**Environmental
Biology**



**Medical
Mycology**



**Plant and
Algal Biology**





University
of Exeter

Our research in **Psychology**

Animal Behaviour



Clinical



Cognition



**Social and
Organisational**



**Research in Ageing
and Cognitive Health**



**Clinical
Neuropsychology
Research**



**Cognitive Control and
Associative Learning**



Mood Disorders



**Psychopharmacology
and Addiction**





University
of Exeter

Our research in

Sport, Exercise & Nutrition Sciences

Psychology



**Biomechanics
& Motor Control**



BioActivEx



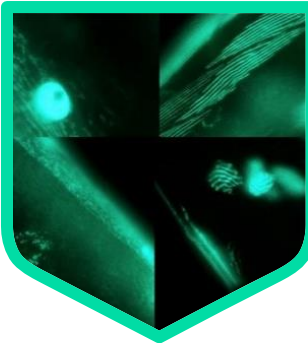
Food, Nutrition & Health



**Applied Physiology,
Nutrition & Metabolism**



C Elegans



**Nutritional
Physiology**



Our research in

Public Health & Environment

**Children's Health &
Exercise Research Centre**



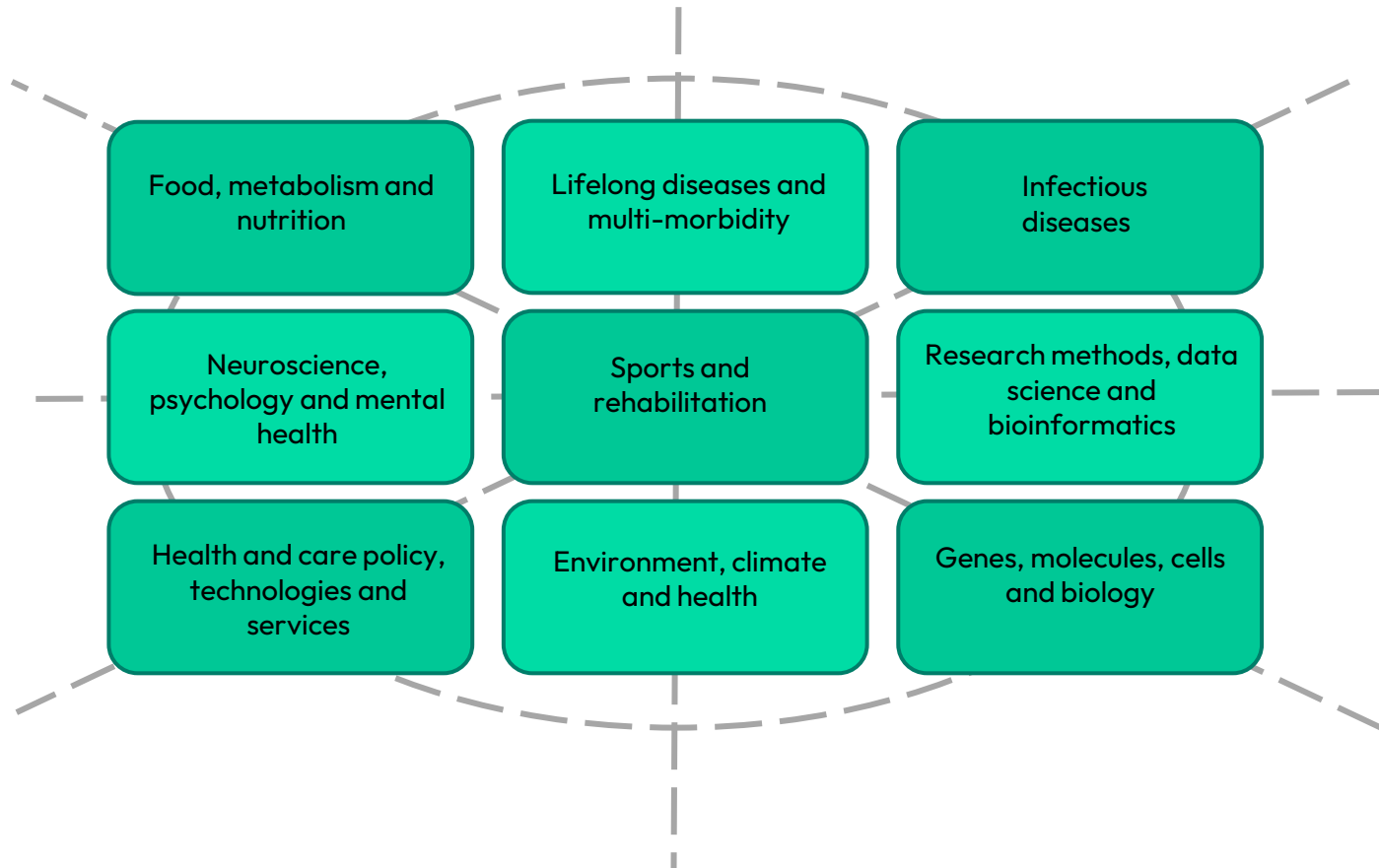
**Physical Activity &
Health through the lifespan**



**Virtual Immersive
Training & Learning**



Thematic areas of research





University
of Exeter

Teaching Facilities:

Clinical Skills Resource Centre (CSRC)

Allows students to practice and learn all elements of medicine – from physical examinations to communicative interactions.

Housed in a specialised wing of Exeter's Heavitree Hospital, students can access a large plethora of resources and equipment, including:

- Bespoke teaching rooms to improve clinical and practical knowledge (including procedures such as injections, venepuncture and basic life support).
- Dedicated communication skills rooms with video capabilities.
- State-of-the-art electronic patient simulators and simulation suites capable of running various unique scenarios to teach and test students.
- Mock NHS wards and emergency departments designed to test students in an artificial working environment.
- <https://medicine.exeter.ac.uk/study/teachingfacilities/clinicalskillsresourcecentre/>





University
of Exeter

Teaching Facilities: **Medical Imaging Suite**

Part of the £10.5 million redevelopment at St Luke's Campus, our Medical Imaging facilities offer a purpose-built, state-of-the-art teaching and research space for students to develop their practical knowledge and experience.

Students access purpose-built X-ray room, laboratory space, and demonstration room to facilitate practical activities that complement the theoretical course content.

X-ray room equipped with digital radiography and ultrasound scanner. Interactive whiteboards demonstrate anatomy. Shareware program aids practicing positioning. Table-top X-ray experiments, CT demonstrations, and an MRI scanner are available.

Our anthropomorphic X-ray phantom and Doppler ultrasound string phantom facilitate hands-on learning. The facility also includes tools for quality assurance tests, a barracuda dosimeter, and bones and anatomical models.



Global Meteorological Simulator (GMS)

- New for 2025: Cutting-edge plant growth chamber facility
- Creates realistic weather conditions including wind, rain, fog, based on weather station data worldwide
- Researchers can investigate how environmental factors impact plant health and disease, to boost food security
- First of its kind in a university setting



Faculty of Health and Life Sciences



Many of our programmes are accredited by professional bodies, including the General Medical Council, British Psychological Society, Nursing & Midwifery Council, Health & Care Professions Council and the Society & College of Radiographers.



University
of Exeter

Exeter 'in the news'

Exeter in the news:

Revolutionising genetic diagnosis

- 5,500 children with rare genetic disorders diagnosed in largescale study
- 60 new severe developmental disorders defined
- Deciphering Developmental Disorders study, UK and Ireland improved treatment for thousands
- 28 per cent (1,183 people) of people in the study were able to change treatment or get further medical testing as a result of their diagnosis.

Thousands of children with rare diseases diagnosed by genetic tests after leaving NHS baffled

The Telegraph

Girl's life saved by pioneering rare diseases study



BBC
NEWS

Genetic clue 'revolution' to pinpoint disabilities



THE TIMES

Exeter in the news:

Diabetes genetic breakthroughs

- 2006: Discovered that half of babies with diabetes can be treated more effectively with a tablet than with multiple daily insulin injections
- Discovered 21 genes that can cause diabetes
- Provide genetic testing for more than 200 countries
- Won more than 30 national / international prizes
- 2024: First test for risk of type 1 diabetes commercially available, based on Exeter research
- 2025: International tool launched to match people to best type 2 diabetes treatment
- Large scale clinical trial in China to ensure people with diabetes have the right diagnosis
- New type 1 diabetes sub type discovered in Africa

Gene based diabetes therapy paves way for personalised medicine for all

 INDEPENDENT



My son couldn't speak until he was five – and spoke his first words within days of 'miracle' genetic treatment for his rare diabetes

 Daily Mail

New test on sale in UK predicts who is at risk of developing diabetes

 THE TIMES

Exeter in the news:

Dementia research and PROTECT study

- PROTECT is a major online research study run by Exeter and King's College London, in partnership with the NHS, aiming to understand how healthy brains age and why people develop dementia.
- Nov 2023 – Study finds brain health in over 50s deteriorated more rapidly during the pandemic, even if they didn't have COVID-19.
- Jan 2024 – Researchers find engaging in music throughout your life is associated with better brain health in older age.
- Sep 2024 – PROTECT finds sports-related concussions may not be associated with long-term cognitive risks for non-professional athletes.
- March 2025 – PROTECT in Canada finds more menopausal more menopausal symptoms linked to poorer brain function in later life



Playing a musical instrument good
for brain health in later life - study

BBC
NEWS

Concussion risks are outweighed by
benefits of amateur sport, study finds

- Surprise results from analysis of 15,000 individuals
- Risks in professional sport are different, authors stress

**The
Guardian**

Greater menopause symptoms linked to
memory and thinking problems – study

INDEPENDENT

Exeter in the news:

Health and environment

- Researchers from ECEHH published a report for Defra in September as part of a £5.77m cross-governmental funded project.
- Results found expanding access to Green Social Prescribing can promote wellbeing and improve mental health, as well as being cost effective.
- Secured further government investment to support leadership and systems change to make Green Social Prescribing successful.

“

After the group I feel joyful, happy, calm. I have a sense of achievement, and I feel my wellbeing increasing. I look forward to attending!

- Green Social Prescribing participant

'Better than medication': prescribing nature works, project shows

Scheme helping people in England connect with nature led to better mental health, report finds



**The
Guardian**

**Prescribing nature can improve
happiness - study**

**B B C
NEWS**



University
of Exeter

Thank you